

ENID, OKLAHOMA

# RNAV (GPS) RWY 17L

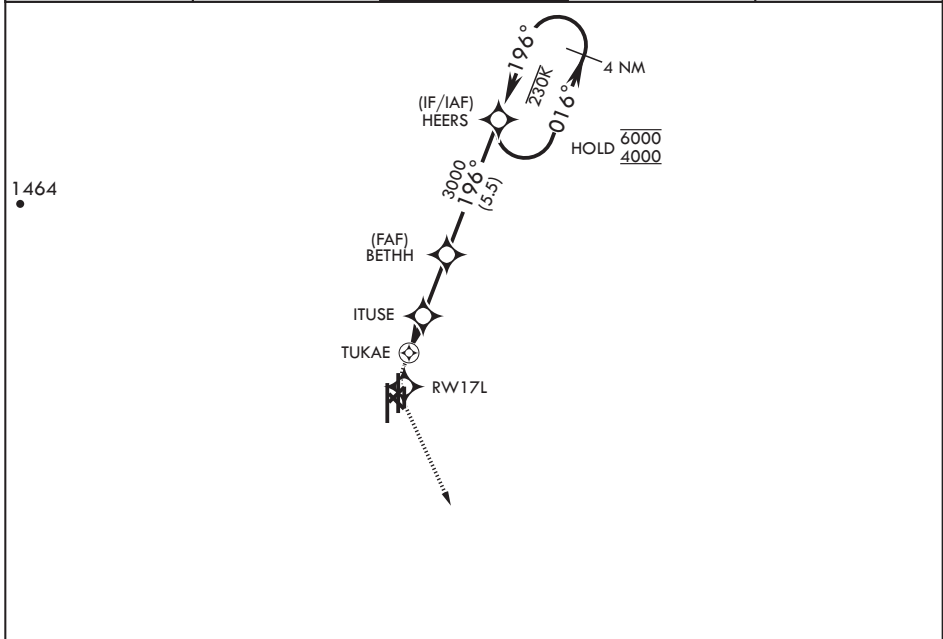
APCH CRS	Rwy Idg	5024
196°	TDZE	1282
	Arprt Elev	1307

AL-135 (USAF)

VANCE AFB (KEND)

RNP APCH	MISSED APPROACH: Climb to 1900 then climbing left turn to 4000 direct EBBEN and hold.
Circling Visibility Reduction by Helicopters NA.	

ATIS* 115.4 263.15	APP CON 125.45 388.2 (E) 126.75 346.325 (W)	TOWER* 124.05 259.1	GND CON 121.675 289.4	CLNC DEL 225.4
-----------------------	---	------------------------	--------------------------	-------------------



**FOR USE BY 71 FTW AIRCRAFT ONLY**

EMERG SAFE ALT 100 NM 4500

EBBEN Holding Pattern: 4 NM, 148°/328°, 4000 ft

MSA RWY 17L 25 NM: 3600 ft

 1900  4000 					ELEV 1307	TDZE 1282
CATEGORY	A	B	C	D		
RNAV MDA	1720-1½	438 (500-1½)	NA	NA	HIRL Rwy 17C-35C, 17R-35L MIRL Rwy 17L-35R REIL Rwy 17L, 35R	
CIRCLING	1760-1½	453 (500-1½)	NA	NA		

ENID, OKLAHOMA

36°20'N - 97°55'W

VANCE AFB (KEND)

Orig 24MAR22  
TERPS

# RNAV (GPS) RWY 17L

SC-1, 20 FEB 2025 to 20 MAR 2025

SC-1, 20 FEB 2025 to 20 MAR 2025