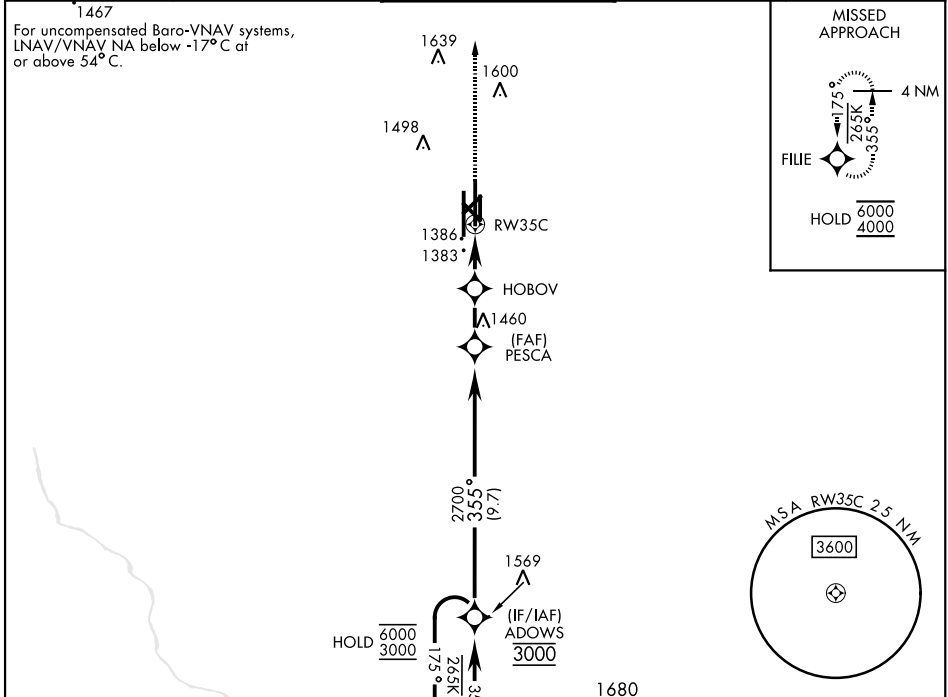


RNAV (GPS) RWY 35C

WAAAS Chan 84880 W35A	APCH CRS 355°	Rwy Idg 9217 TDZE 1293 Arprt Elev 1307	AL-135 [USAF]	VANCE AFB (KEND)
---	-------------------------	---	---------------	------------------

RNP APCH	SALS (A2)	MISSED APPROACH: Climb to 4000 direct FILE and hold.
----------	---------------------	--

ATIS ★ 115.4 263.15	APP CON 125.45 388.2 (E) 126.75 346.325 (W)	TOWER ★ 124.05 259.1	GND CON 121.675 289.4	CLNC DEL 225.4
-------------------------------	---	--------------------------------	---------------------------------	--------------------------



ELEV 1307	TDZE 1293
-----------	-----------

EMERG SAFE ALT 100 NM 4500

4 NM Holding Pattern ADOWS VGSI and RNAV glidepath not coincident (VGSI Angle 2.50/TCH 41). PESCA

GP 2.90° TCH 42

4000 FILE

1.2 NM to RW35C

2.1 NM 2.3 NM

CATEGORY	A	B	C	D	E
LPV DA	1543/40		250	(300-34)	
LNAV/VNAV DA *	1568/40	275	(300-34)		1581/40 288 (300-34)
LNAV MDA **	1660/40		367	(400-34)	
*** CIRCLING	1760-1 453 (500-1)	1800-1½ 493 (500-1½)	1900-2 593 (600-2)	2300-3 993 (1000-3)	

HIRL Rwy 17C-35C, 17R-35L
MIRL Rwy 17L-35R
REIL Rwy 17L-35R

TWR 1416
★ 1457

RNAV (GPS) RWY 35C

SC-1, 20 FEB 2025 to 20 MAR 2025

SC-1, 20 FEB 2025 to 20 MAR 2025