

# RNAV (GPS) Y RWY 17R

|          |           |      |
|----------|-----------|------|
| APCH CRS | Rwy Idg   | 9217 |
| 163°     | TDZE      | 1287 |
|          | Arpt Elev | 1307 |

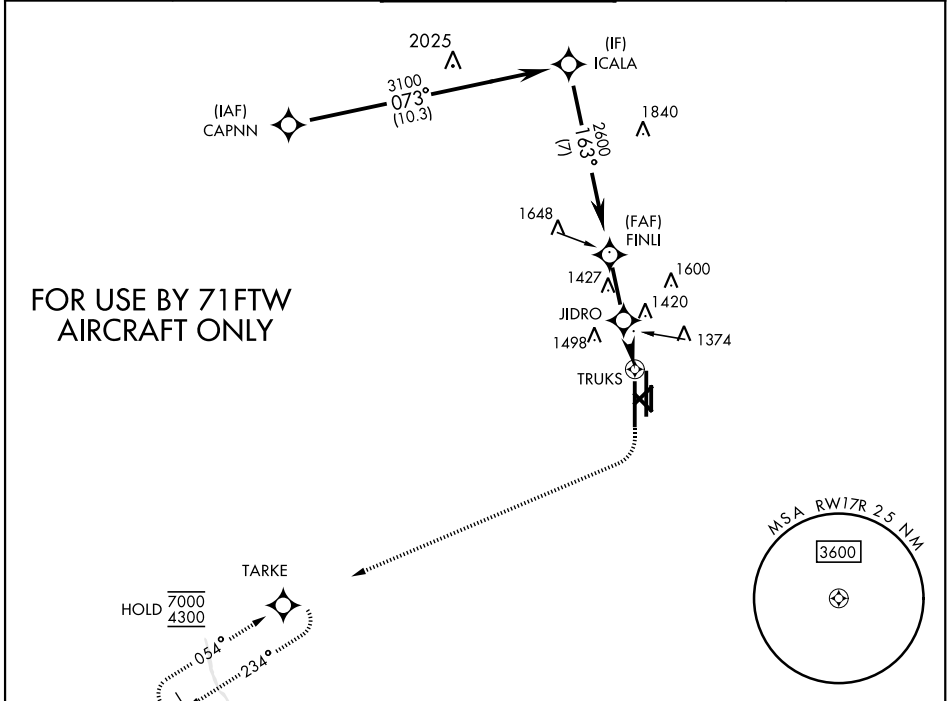
AL-135 [USAF]

VANCE AFB (KEND)

|  |      |
|--|------|
| RNP APCH   | SALS |
| RADAR required   | (A2) |
| * When ALS inop, increase vis to 1 mile.<br>Circling visibility reduction by helicopters not authorized. |      |

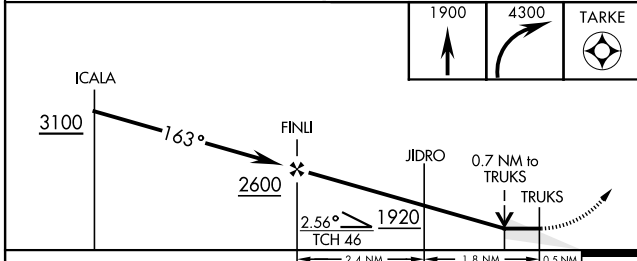
MISSED APPROACH: Climb to 1900, then climbing right turn to 4300 direct TARKE and hold.

|              |  |              |               |          |
|--------------|--|--------------|---------------|----------|
| ATIS ★       | APP CON                                | TOWER ★      | GND CON       | CLNC DEL |
| 115.4 263.15 | 125.45 388.2 (E)<br>126.75 346.325 (W) | 124.05 259.1 | 121.675 289.4 | 225.4    |

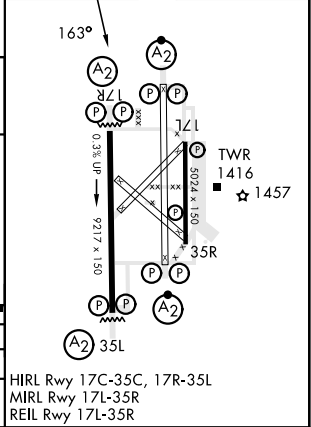


SC-1, 20 FEB 2025 to 20 MAR 2025

SC-1, 20 FEB 2025 to 20 MAR 2025



|           |           |
|-----------|-----------|
| ELEV 1307 | TDZE 1287 |
|-----------|-----------|



|           |                        |                            |                    |                     |   |
|-----------|------------------------|----------------------------|--------------------|---------------------|---|
| CATEGORY  | A                      | B                          | C                  | D                   | E |
| LNAV MDA* | 1640-3/4 353 (400-3/4) |                            |                    |                     |   |
| CIRCLING  | 1760-1 453 (500-1)     | 1800-1 1/2 493 (500-1 1/2) | 1900-2 593 (600-2) | 2300-3 993 (1000-3) |   |

HIRL Rwy 17C-35C, 17R-35L  
MIRL Rwy 17L-35R  
REIL Rwy 17L-35R

# RNAV (GPS) Y RWY 17R