

ENID, OKLAHOMA

VOR/DME RWY 35R

VORTAC END 115.4 Chan 101	APCH CRS 342°	Rwy Idg TDZE 1284 Arpt Elev 1307
---	-------------------------	--

AL-135 [USAF]

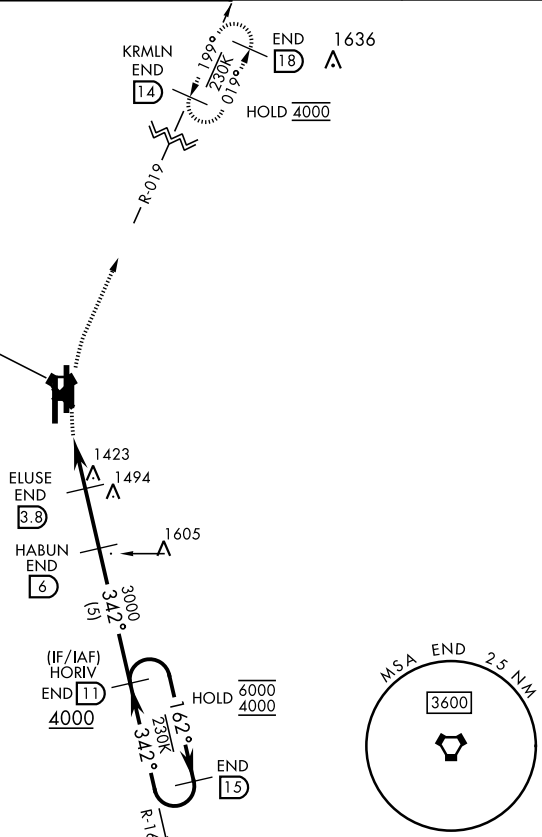
VANCE AFB (KEND)

<p>Visibility reduction by helicopters NA.</p>	<p>MISSED APPROACH: Climbing right turn to 4000 on heading 005°, intercept END VORTAC R-019 to KRMLN and hold.</p>
--	--

<p>ATIS ★ 115.4 263.15</p>	<p>APP CON 125.45 388.2 EAST 126.75 346.325 WEST</p>	<p>TOWER ★ 124.05 259.1</p>	<p>GND CON 121.675 289.4</p>	<p>CLNC DEL 225.4</p>
---------------------------------------	--	--	---	----------------------------------

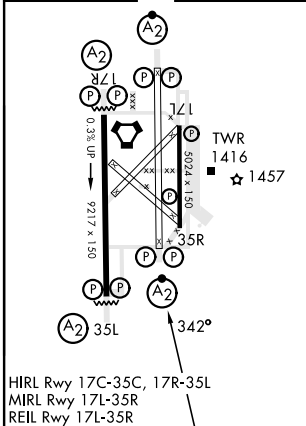
FOR USE BY 71 FTW ACFT ONLY

VANCE
115.4 END ≡:.
Chan 101



EMERG SAFE ALT 100 NM 4500

ELEV 1307	TDZE 1284
-----------	-----------



HIRL Rwy 17C-35C, 17R-35L
MIRL Rwy 17L-35R
REIL Rwy 17L-35R

<p>4000 hdg 005° END R-019</p>	<p>KRMLN END (14)</p>	<p>VGSI and descent angles not coincident (VGSI Angle 3.00/TCH 50).</p>		
<p>VORTAC</p>	<p>FIGTU (1.9)</p>	<p>ELUSE (3.8) 3.02° TCH 40</p>		
<p>HABUN (6)</p>	<p>HORIV (11) 162°</p>	<p>(15) 342°</p>		
<p>1.1</p>	<p>1.9 NM</p>	<p>2.2 NM</p>		
<p>CATEGORY</p>	<p>A</p>	<p>B</p>	<p>C</p>	<p>D</p>
<p>S-35R</p>	<p>1720-1$\frac{3}{8}$ 436</p>	<p>(500-1$\frac{3}{8}$)</p>	<p>NA</p>	<p>NA</p>
<p>C CIRCLING</p>	<p>1760-1$\frac{3}{8}$ 453</p>	<p>(500-1$\frac{3}{8}$)</p>	<p>NA</p>	<p>NA</p>

ENID, OKLAHOMA

36°20'N-97°55'W

VANCE AFB (KEND)

Orig 24MAR22

VOR/DME RWY 35R

SC-1, 20 FEB 2025 to 20 MAR 2025

SC-1, 20 FEB 2025 to 20 MAR 2025