

ENID, OKLAHOMA

VOR/DME or TACAN RWY 17C

VORTAC END 115.4 Chan 101	APCH CRS 182°	Rwy Idg 9217 TDZE 1277 Arpt Elev 1307
---	-------------------------	--

AL-135 [USAF]

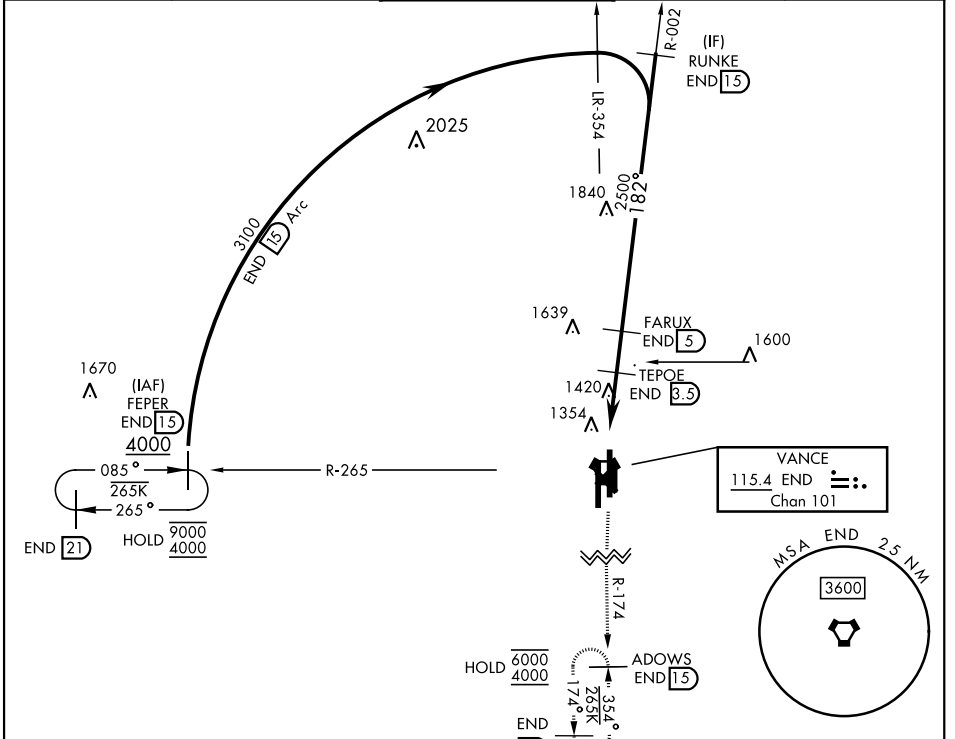
VANCE AFB (KEND)

▼ * When ALS inop, increase CAT AB RVR to 55 and vis to 1 mile,
CAT CDE RVR to 60 and vis to 1/8 miles.

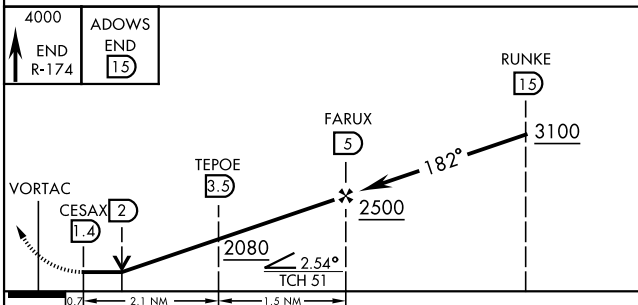


MISSED APPROACH: Climb to 4000, intercept
END VORTAC R-174 to ADOWS and hold.

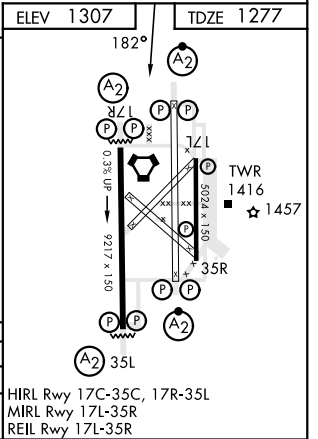
ATIS * 115.4 263.15	APP CON 125.45 388.2 EAST 126.75 346.325 WEST	TOWER * 124.05 259.1	GND CON 121.675 289.4	CLNC DEL 225.4
-------------------------------	---	--------------------------------	---------------------------------	--------------------------



EMERG SAFE ALT 100 NM 4500



4000 END R-174	ADOWS END 15	RUNKE 15				
CATEGORY	A	B	C	D	E	
S-17C *	1680/40	403 (400-34)	1680/50	403 (400-1)		
◉ CIRCLING	1760-1	453 (500-1)	1800-1½ 493 (500-1½)	1900-2 593 (600-2)	2300-3 993 (1000-3)	



ENID, OKLAHOMA
Amdt 5 24FEB22

36° 20'N-97° 55'W

VANCE AFB (KEND)

VOR/DME or TACAN RWY 17C

SC-1, 20 FEB 2025 to 20 MAR 2025

SC-1, 20 FEB 2025 to 20 MAR 2025