

ENID, OKLAHOMA

VOR/DME or TACAN RWY 35C

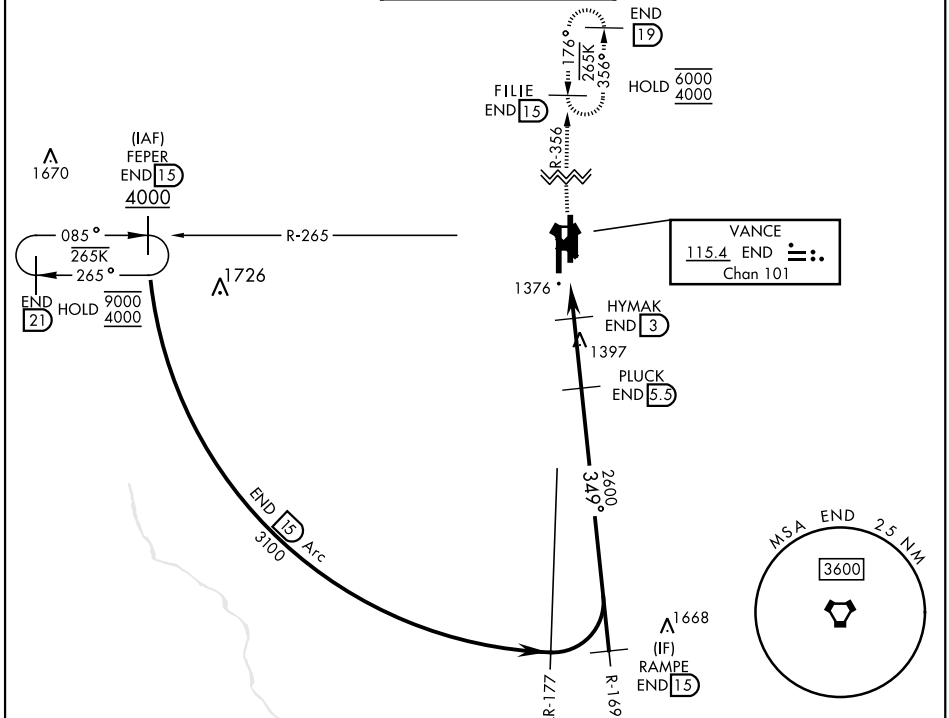
VORTAC END 115.4 Chan 101	APCH CRS 349°	Rwy Idg 9217 TDZE 1293 Arprt Elev 1307
---	-------------------------	---

AL-135 [USAF]

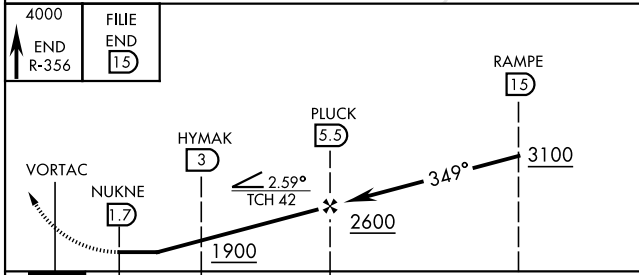
VANCE AFB (KEND)

<p>▽ * When ALS inop, increase RVR to 55, vis to 1 mile.</p>	<p>SALSF</p>	MISSED APPROACH: Climb to 4000, intercept END VORTAC R-356 to FILIE and hold.

<p>ATIS ★ 115.4 263.15</p>	<p>APP CON 125.45 388.2 EAST 126.75 346.325 WEST</p>	<p>TOWER ★ 124.05 259.1</p>	<p>GND CON 121.675 289.4</p>	<p>CLNC DEL 225.4</p>
---------------------------------------	--	--	---	----------------------------------

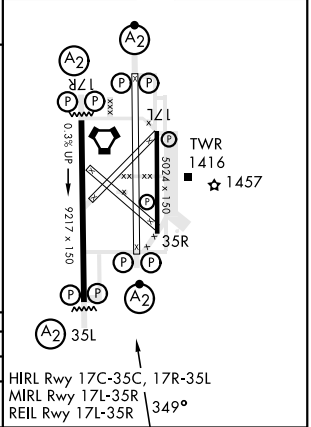


EMERG SAFE ALT 100 NM 4500



<p>4000 ↑ END R-356</p>	<p>FILIE END 15</p>					
		RAMPE 15				
		3100				
		2600				
		1900				
		1760				
CATEGORY	A	B	C	D	E	
S-35C *	1660/40		367	(400-34)		
CIRCLING	1760-1	453 (500-1)	1800-1½ 493 (500-1½)	1900-2 593 (600-2)	2300-3 993 (1000-3)	

ELEV 1307	TDZE 1293
-----------	-----------



ENID, OKLAHOMA
Amdt 5 24FEB22

36°20'N-97°55'W

VANCE AFB (KEND)

VOR/DME or TACAN RWY 35C

SC-1, 20 FEB 2025 to 20 MAR 2025

SC-1, 20 FEB 2025 to 20 MAR 2025