

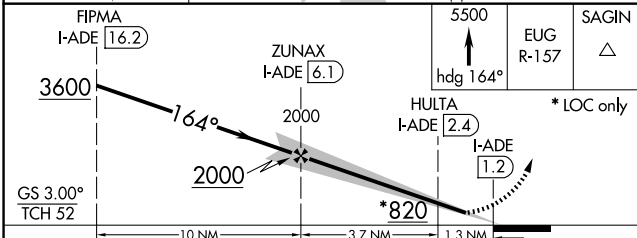
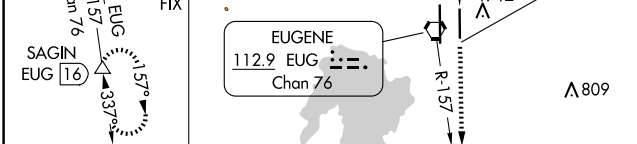
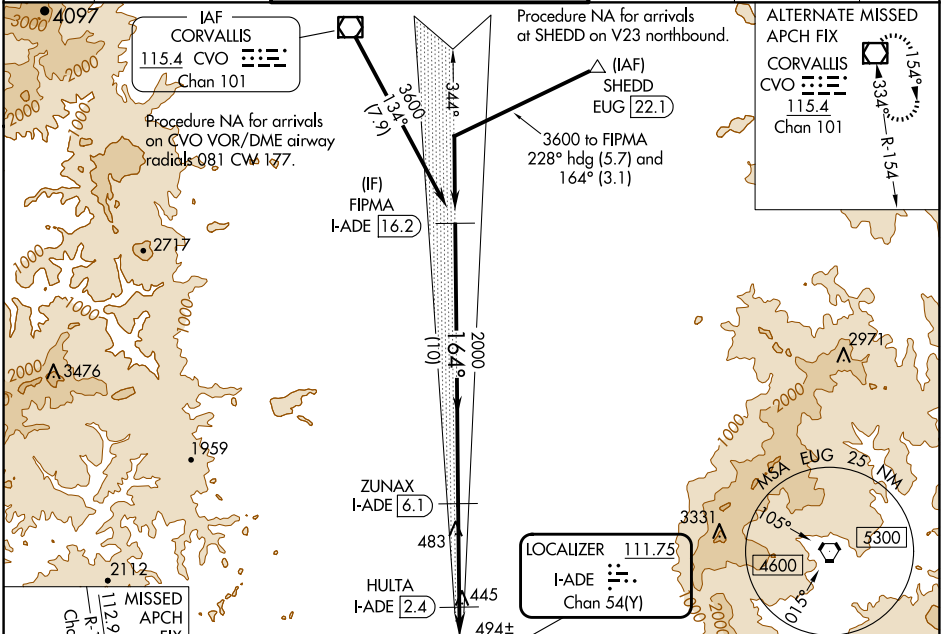
LOC/DME I-ADE 111.75 Chan 54 (Y)	APP CRS 164°	Rwy Idg 6000
	TDZE 369	Apt Elev 374

I LS or LOC RWY 16L

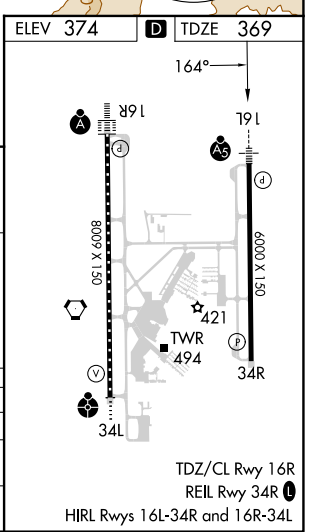
MAHLON SWEET FLD (EUG)

DME required.		MALS R	MISSED APPROACH: Climb to 5500 on heading 164° and EUG VORTAC R-157 to SAGIN/EUG 16 DME and hold, continue climb-in-hold to 5500.	
Simultaneous approach authorized.				

ATIS 125.225	CASCADE APP CON* 119.6 348.7	EUGENE TOWER* 118.9 (CTAF) 371.9 (Rwy 16R/34L) 124.15 371.9 (Rwy 16L/34R)	GND CON 121.7 269.5	CLNC DEL 121.7 269.5	UNICOM 122.95
------------------------	--	--	-------------------------------	--------------------------------	-------------------------



CATEGORY	A	B	C	D
S-ILS 16L		569-1/2	200 (200-1/2)	
S-LOC 16L		700-1/2	331 (400-1/2)	
CIRCLING	820-1 446 (500-1)	840-1 466 (500-1)	1000-1 3/4 626 (700-1 3/4)	1140-2 1/2 766 (800-2 1/2)



NW-1, 20 FEB 2025 to 20 MAR 2025

NW-1, 20 FEB 2025 to 20 MAR 2025