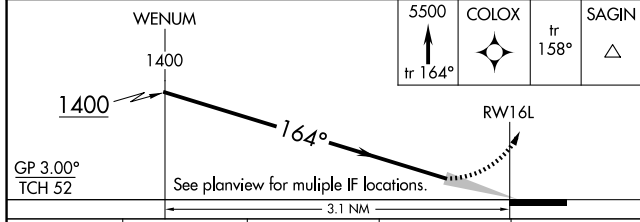
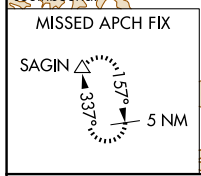
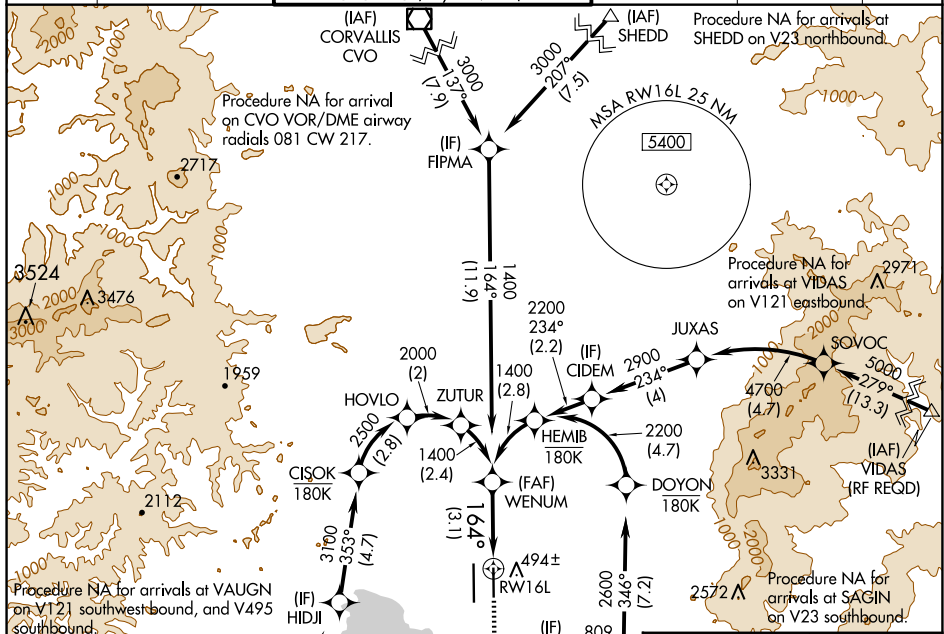


APP CRS	Rwy Idg	6000
164°	TDZE	369
	Apt Elev	374

RNAV (RNP) Z RWY 16L

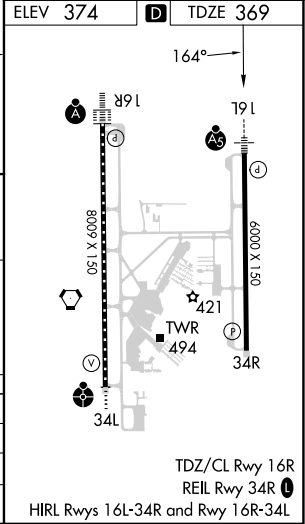
MAHLON SWEET FLD (EUG)

RNP AR APCH.		MALSR	MISSED APPROACH: Climb to 5500 on track 164° to COLOX and on track 158° to SAGIN and hold, continue climb-in-hold to 5500.		
<p>▼ For uncompensated Baro-VNAV systems, procedure NA below -9°C or above 54°C. Simultaneous approach authorized. For inop ALS, increase RNP 0.30 all Cats visibility to 1 SM.</p>					
ATIS	CASCADE APP CON	EUGENE TOWER	GND CON	CLNC DEL	UNICOM
125.225	119.6 348.7	118.9 (CTAF) 0 371.9 (Rwy 16R/34L) 124.15 371.9 (Rwy 16L/34R)	121.7 269.5	121.7 269.5	122.95



CATEGORY	A	B	C	D
RNP 0.10 DA		699-1/2	330 (400-1/2)	
RNP 0.30 DA		749-5/8	380 (400-5/8)	

AUTHORIZATION REQUIRED



NW-1, 20 FEB 2025 to 20 MAR 2025

NW-1, 20 FEB 2025 to 20 MAR 2025