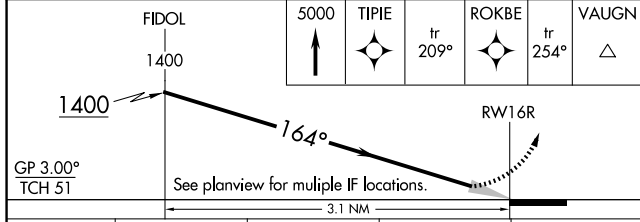
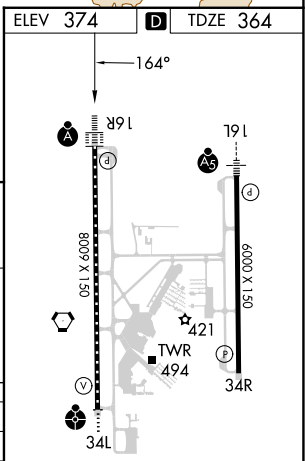
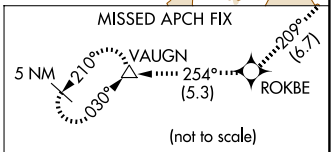
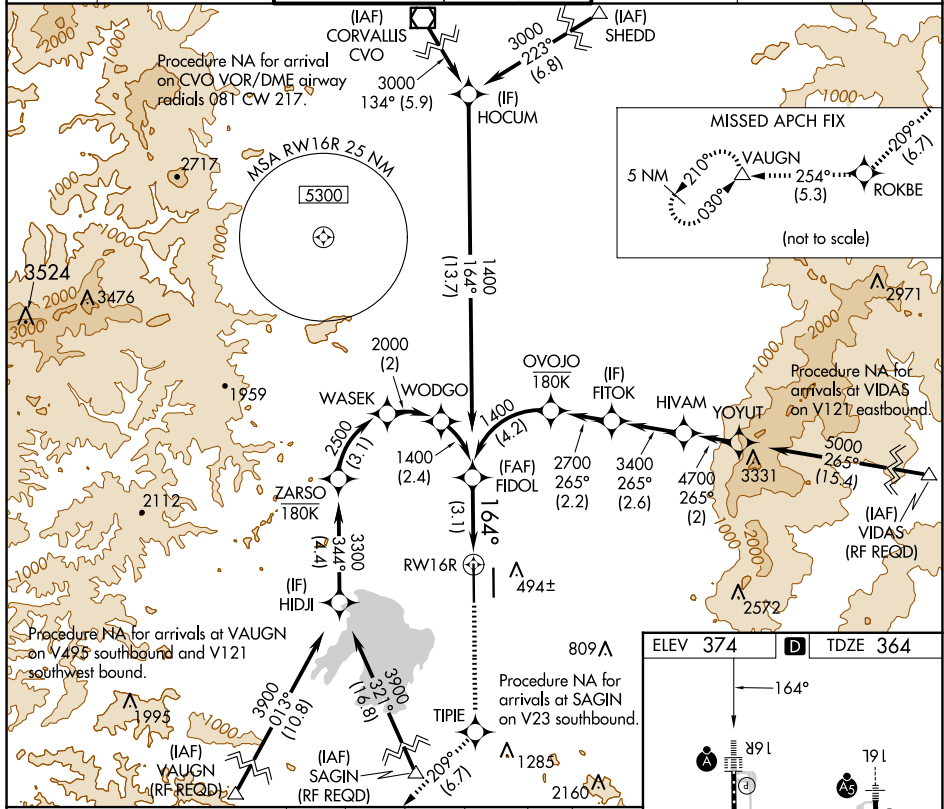


APP CRS	Rwy Idg	8009
164°	TDZE	364
	Apt Elev	374

RNAV (RNP) Z RWY 16R

MAHLON SWEET FLD (EUG)

RNP AR APCH.		EUGENE TOWER * 118.9 (CTAF) 0 371.9 (Rwy 16R/34L) 124.15 371.9 (Rwy 16L/34R)		GND CON 121.7 269.5	CLNC DEL 121.7 269.5	UNICOM 122.95
▼ For uncompensated Baro-VNAV systems, procedure NA below -9°C or above 54°C. Simultaneous approach authorized. For inop ALS, increase RNP 0.17 all Cats visibility to RVR 4000 and RNP 0.30 all Cats visibility to RVR 5500.		ALSF-2 		MISSED APPROACH: Climb to 5000 direct TIPE, and on track 209° to ROKBE, and track 254° to VAUGN and hold, continue climb-in-hold to 5000.		



CATEGORY	A	B	C	D
RNP 0.17 DA		614/24	250 (300-½)	
RNP 0.30 DA		711/30	347 (400-¾)	

AUTHORIZATION REQUIRED

NW-1, 20 FEB 2025 to 20 MAR 2025

NW-1, 20 FEB 2025 to 20 MAR 2025