
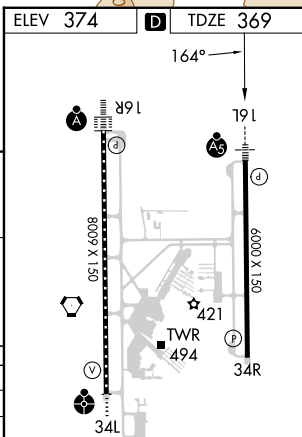
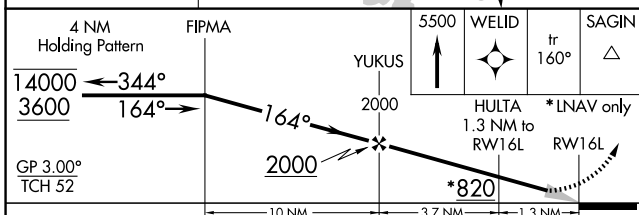
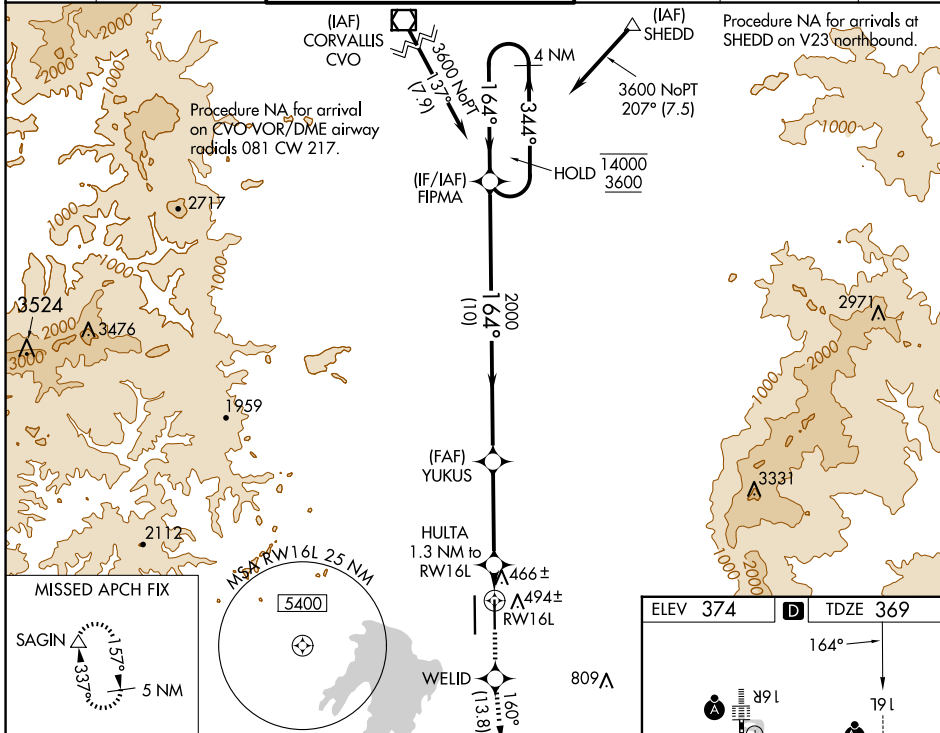


WAAS CH <b>81827</b> <b>W16A</b>	APP CRS <b>164°</b>	Rwy Idg TDZE Apt Elev	<b>6000</b> <b>369</b> <b>374</b>
--	------------------------	-----------------------------	---

# RNAV (GPS) Y RWY 16L

MAHLON SWEET FLD (EUG)

RNP APCH.		EUGENE TOWER ★ <b>118.9</b> (CTAF) <b>0 371.9</b> (Rwy 16R/34L) <b>124.15 371.9</b> (Rwy 16L/34R)		GND CON <b>121.7 269.5</b>	CLNC DEL <b>121.7 269.5</b>	UNICOM <b>122.95</b>
<p>⚠ Simultaneous approach authorized. LNAV procedure NA during simultaneous operations. Use of FD or AP providing RNAV track guidance required during simultaneous operations. For uncompensated Baro-VNAV systems, LNAV/VNAV NA below -10°C or above 54°C. For Inop ALS, increase LNAV/VNAV all Cats visibility to 7/5 SM, increase LNAV Cat C/D visibility to 1 SM.</p>		<p>MALSR  </p>		<p>MISSED APPROACH: Climb to 5500 direct WELID and on track 160° to SAGIN and hold, continue climb-in-hold to 5500.</p>		



CATEGORY	A	B	C	D
LPV DA		569-1/2	200 (200-1/2)	
LNAV/VNAV DA		632-1/2	263 (300-1/2)	
LNAV MDA	720-1/2	351 (400-1/2)	720-5/8	351 (400-5/8)
<b>C</b> CIRCLING	820-1 446 (500-1)	840-1 466 (500-1)	1000-1 3/4 626 (700-1 3/4)	1140-2 1/2 766 (800-2 1/2)

TDZ/CL Rwy 16R  
REIL Rwy 34R  
HIRL Rwy 16L-34R and Rwy 16R-34L

NW-1, 20 FEB 2025 to 20 MAR 2025

NW-1, 20 FEB 2025 to 20 MAR 2025