

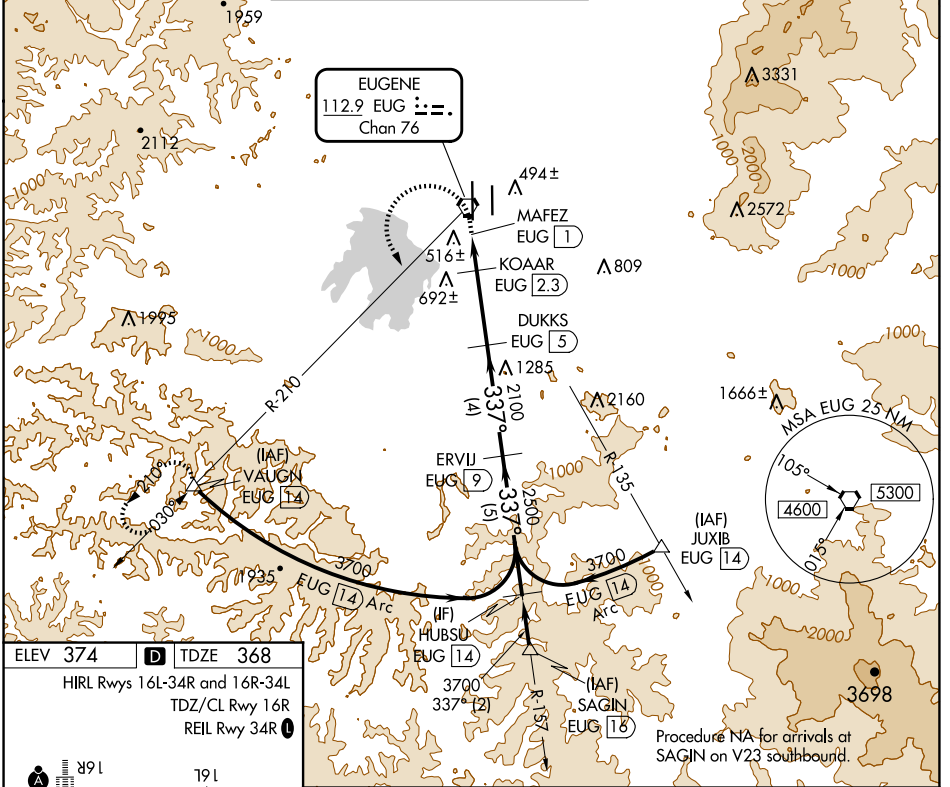
VORTAC EUG 112.9 Chan 76	APP CRS 337°	Rwy Idg TDZE Apt Elev	8009 368 374
---------------------------------------	------------------------	-----------------------------	---

VOR or TACAN RWY 34L

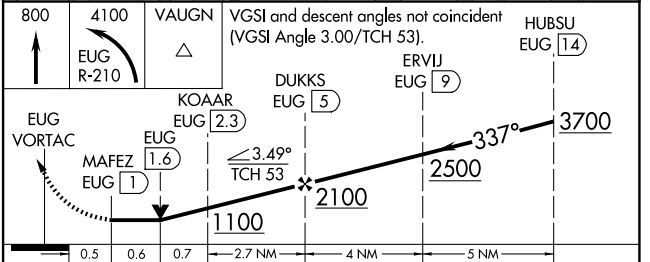
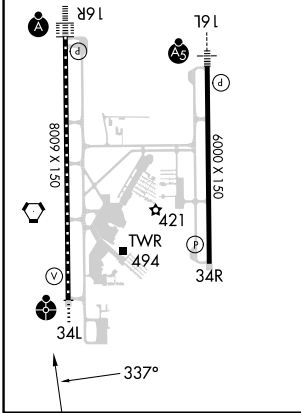
MAHLON SWEET FLD (EUG)

DME required for procedure entry. DME required.		ODALS	MISSED APPROACH: Climb to 800 then climbing left turn to 4100 on EUG VORTAC R-210 to VAUGN/EUG 1.4 DME and hold, continue climb-in-hold to 4100.		
---	--	-------	--	--	--

ATIS 125.225	CASCADE APP CON* 119.6 348.7	EUGENE TOWER* 118.9 (CTAF) 371.9 (Rwy 16R/34L) 124.15 371.9 (Rwy 16L/34R)	GND CON 121.7 269.5	CLNC DEL 121.7 269.5	UNICOM 122.95
------------------------	--	--	-------------------------------	--------------------------------	-------------------------



ELEV 374	D	TDZE 368
HIRL Rws 16L-34R and 16R-34L		
TDZ/CL Rwy 16R		
REIL Rwy 34R		



CATEGORY	A	B	C	D
S-34L	780/40	412 (500-¾)	780/55	412 (500-1)
CIRCLING	820-1 446 (500-1)	840-1 466 (500-1)	1000-1¾ 626 (700-1¾)	1140-2½ 766 (800-2½)

NW-1, 20 FEB 2025 to 20 MAR 2025

NW-1, 20 FEB 2025 to 20 MAR 2025