

22083

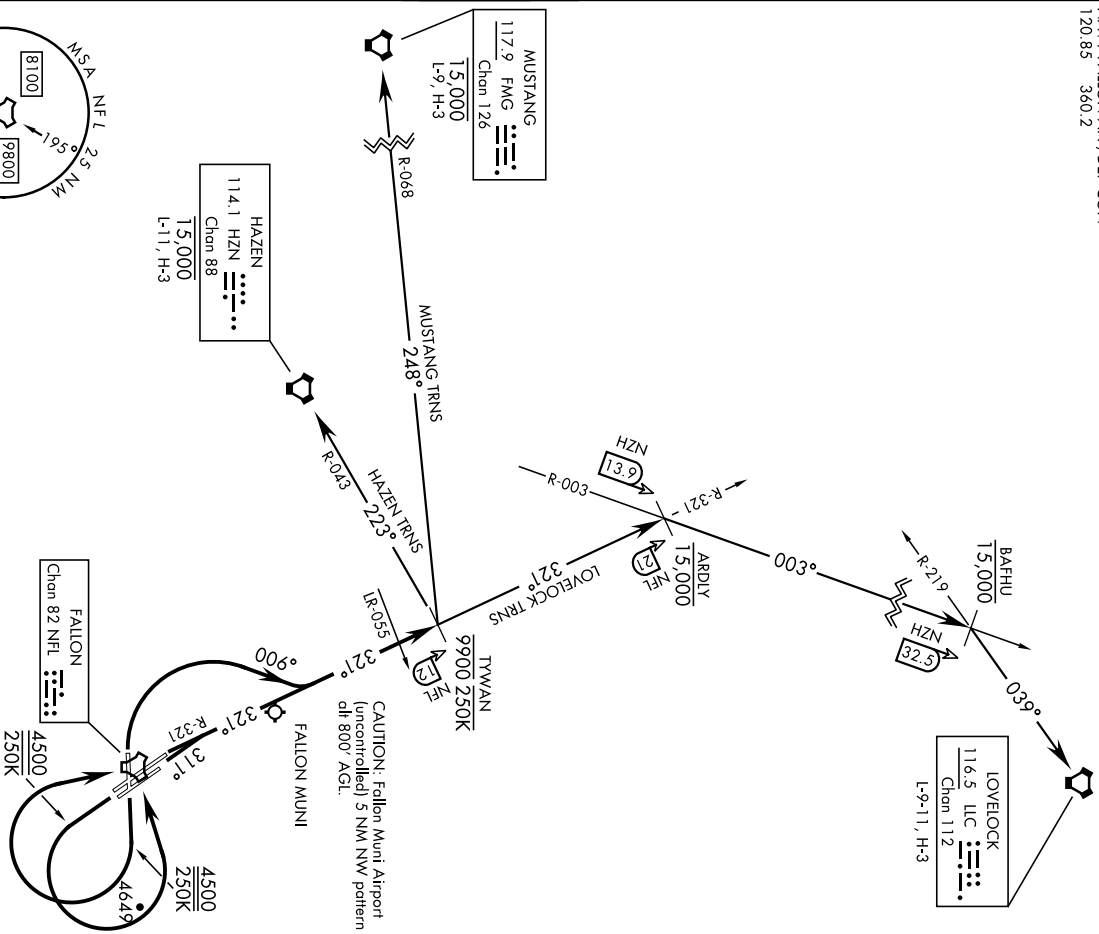
TYWAN-ONE DEPARTURE (TYWAN1•TYWAN)

FALLOM NAS (VAN VOORHIS FLD) (KNFL)
FALLOM, NEVADA

Rwy	Knots	60	120	180	240	300	360
7	V/V(fpm)	217	434	651	868	1085	1302

Minimum Climb Rate to 4900

ATIS 370.925 ★
 CLNC DEL
 333.53
 GND CON
 251.15
 NAVY FALLOM TOWER ★
 119.25 340.2
 NAVY FALLOM APP/DEP CON
 120.85 360.2



SW-4, 20 FEB 2025 to 20 MAR 2025

SW-4, 20 FEB 2025 to 20 MAR 2025

(Continued on next page)

TA FLI 80

TYWAN-ONE DEPARTURE (TYWAN1•TYWAN)

FALLOM, NEVADA
FALLOM NAS (VAN VOORHIS FLD) (KNFL)

Orig 24MAR22

A1-143 [USN]

▼
DEPARTURE ROUTE DESCRIPTION

TAKEOFF RWY 7: Climb to 4500, then climbing right turn to NFL TACAN, intercept NFL R-321 to TYWAN and cross TYWAN at or below 9900. Do not exceed 250 KIAS until TYWAN.

TAKEOFF RWY 13L/R: Climb to 4500, then climbing left turn to NFL TACAN, intercept NFL R-321 to TYWAN and cross TYWAN at or below 9900. Do not exceed 250 KIAS until NFL.

TAKEOFF RWY 25: Climbing right turn to intercept NFL TACAN R-321 to TYWAN. Cross TYWAN at or below 9900. Do not exceed 250 KIAS until established on NFL R-321.

TAKEOFF RWY 31L/R: Climb on heading 311° to intercept NFL TACAN R-321 to TYWAN. Cross TYWAN at or below 9900.

HAZEN TRANSITION (TYWAN1.HZN): Left turn direct HZN VORTAC. Cross HAZEN at or below 15,000 or as assigned by ATC.

LOVELOCK TRANSITION (TYWAN1.LLC): Direct ARDLY, right turn direct BAFHU, right turn direct LLC VORTAC. Cross ARDLY at or below 15,000 or as assigned by ATC.

MUSTANG TRANSITION (TYWAN1.FMG): Left turn direct FMG VORTAC. Cross MUSTANG at or below 15,000 or as assigned by ATC.

TYWAN-ONE DEPARTURE (TYWAN1•TYWAN)

Orig 24MAR22

FALLOM, NEVADA
FALLOM NAS (VAN VOORHIS FLD) (KNFL)