

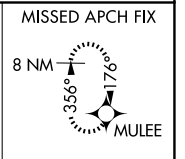
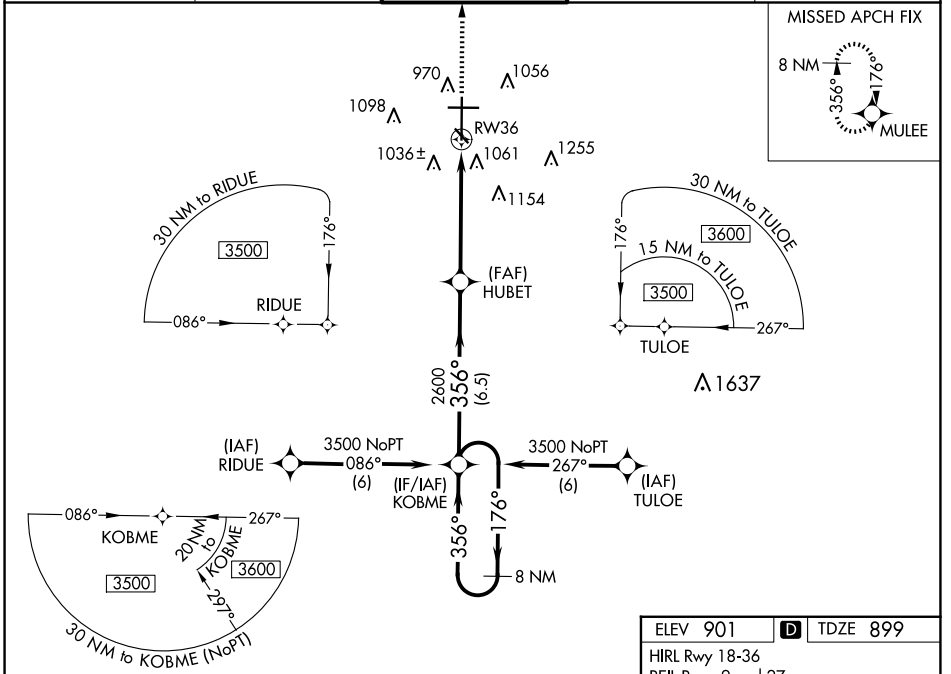
WAAS CH <b>50106</b> <b>W36A</b>	APP CRS <b>356°</b>	Rwy Idg TDZE Apt Elev	<b>9001</b> <b>899</b> <b>901</b>
--	------------------------	-----------------------------	---

# RNAV (GPS) RWY 36

HECTOR INTL (F.A.R.)

RNP APCH. ⚠ Baro-VNAV NA below -16°C (4°F). For inop MALSR, increase LPV Cat E visibility to RVR 4000, and increase LNAV/VNAV and LNAV Cat E visibility to 1½ mile.	MALSR 	MISSED APPROACH: Climb to 3500 direct MULEE and hold.
--	-----------	---

ATIS <b>124.5 379.2</b>	FARGO APP CON <b>120.4 377.15</b>	FARGO TOWER <b>133.8 290.4</b>	GND CON <b>121.9 348.6</b>	CLNC DEL <b>121.9 348.6</b>
----------------------------	--------------------------------------	-----------------------------------	-------------------------------	--------------------------------



NC-1, 20 FEB 2025 to 20 MAR 2025

NC-1, 20 FEB 2025 to 20 MAR 2025

8 NM Holding Pattern GP 3.00° TCH 55		VGSIs and RNAV glidepath not coincident (VGSi Angle 3.00/TCH 71).			3500 MULEE
3500 ← 176° → 356° → 356° → 2600		*1.4 NM to RWY36 RWY36			*LNAV only.
6.5 NM		3.7 NM		1.4 NM	
CATEGORY	A	B	C	D	E
LPV DA	1150/24 251 (300-½)				
LNAV/VNAV DA	1360/50 461 (500-1)			1360/60 461 (500-1¼)	
LNAV MDA	1420/24 521 (600-½)	1420/50 521 (600-1)	1420/60 521 (600-1¼)		
<b>C</b> CIRCLING	1420-1 519 (600-1)	1520-1¾ 619 (700-1¾)	1620-2¼ 719 (800-2¼)	1620-2½ 719 (800-2½)	

