

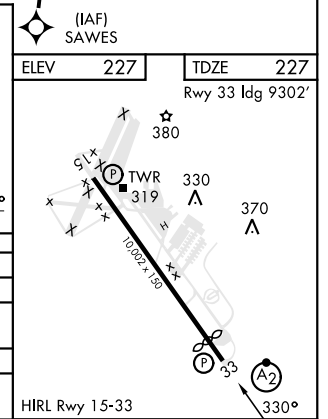
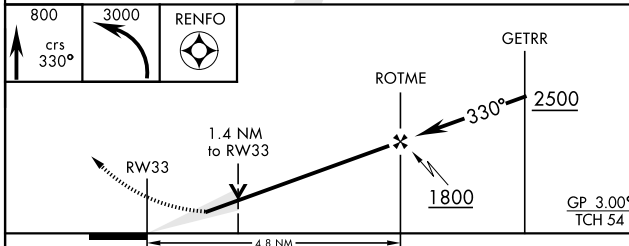
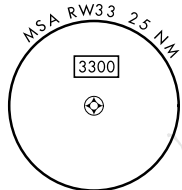
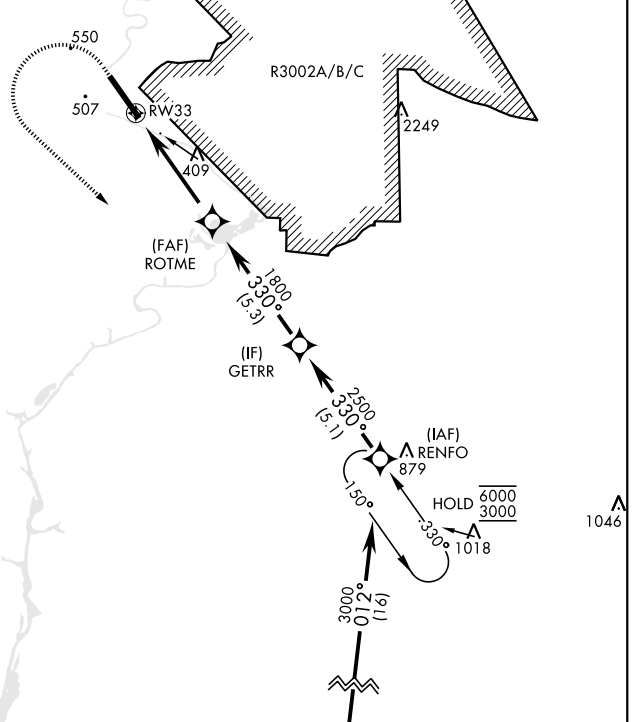
RNAV (GPS) RWY 33

WAAS CH 67545 W33A	APCH CRS 330°	Rwy ldg 9302 TDZE 227 Arpt Elev 227	[USA]	LAWSON AAF (KLSF)
----------------------------------------	-------------------------	----------------------------------------------------------------	-------	-------------------

RNP APCH-GPS	SALSF (A2)	MISSED APPROACH: Climb to 800 then climbing left turn to 3000 direct RENFO and hold.
<p>▼ *When ALS inop, increase vis to 1½ mile.</p> <p>**When ALS inop, increase CAT AB RVR to 55, vis to 1 mile; CAT CD vis to 1½ miles.</p> <p>*** Circling not authorized NE of Rwy 15-33. Not authorized when tower closed.</p>		

ATIS ★ 134.375	ATLANTA APP CON 125.5 323.1	TOWER 119.05 (CTAF) 269.525	GND CON 121.7 254.25	CLNC DEL 121.7 251.15
--------------------------	---------------------------------------	---------------------------------------	--------------------------------	---------------------------------

For uncompensated Baro-VNAV systems, LNAV/VNAV below -15°C or above 54°C.



CATEGORY	A	B	C	D
LPV DA	427/40	200	(200-¾)	
LNAV/VNAV DA*	701/60	474	(500-1½)	
LNAV MDA**	740/40 513 (600-¾)	740-1¼ 513 (600-1¼)		
*** CIRCLING	820-1	860-1	960-2	1080-2¾
	593 (600-1)	633 (700-1)	733 (800-2)	853 (900-2¾)

FORT MOORE, GEORGIA 32° 20'N-85° 00'W LAWSON AAF (KLSF)

Amdt 1 28DEC23

RNAV (GPS) RWY 33

SE-4, 20 FEB 2025 to 20 MAR 2025

SE-4, 20 FEB 2025 to 20 MAR 2025