

# TACAN-A

TACAN POB Chan <b>85</b>	APCH CRS <b>360°</b>	Rwy ldg TDZE Arprt Elev	<b>N/A</b> <b>N/A</b> <b>225</b>
-----------------------------	-------------------------	-------------------------------	--

[USAF]

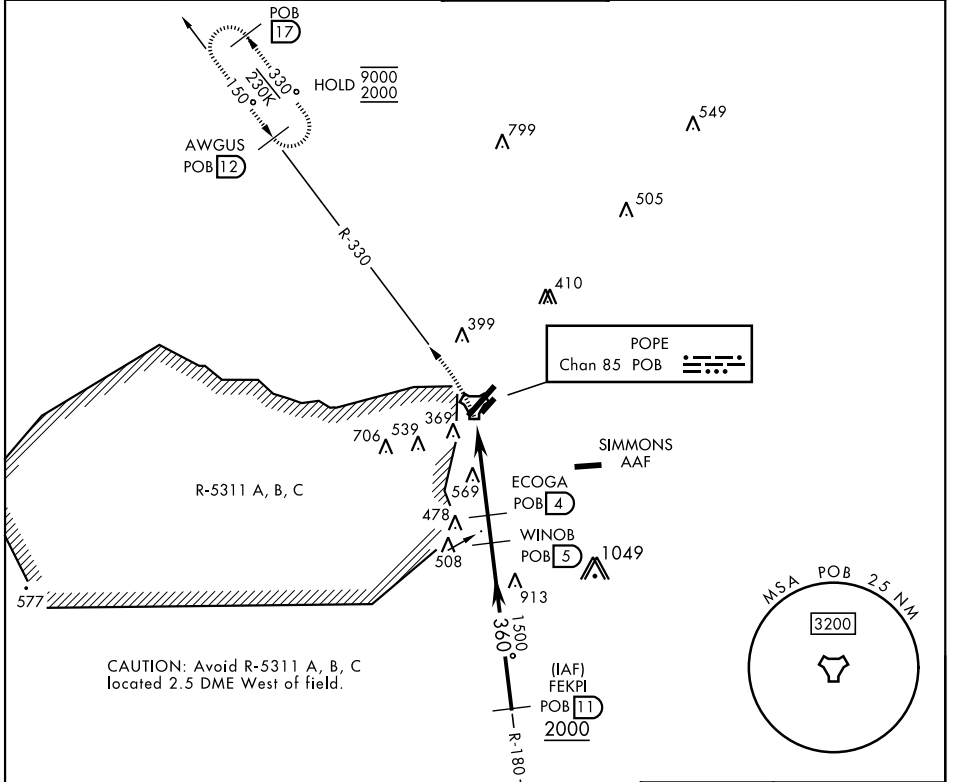
POPE AAF (KPOB)

RADAR required

▼ \* Circling not authorized SE of Rwy 5-23.

MISSED APPROACH: Climbing left turn to 2000 via POB R-330 to AWGUS and hold.

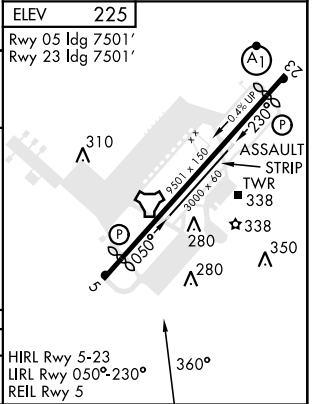
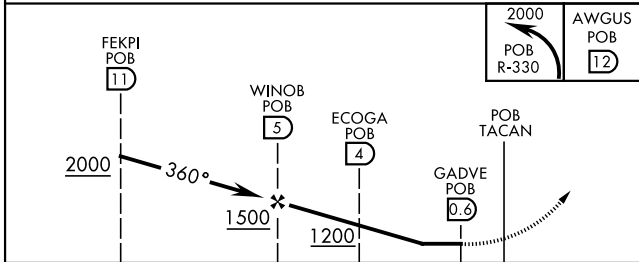
ATIS <b>132.3 353.725</b>	FAYETTEVILLE APP CON <b>125.175 285.575</b> (271°-090°) <b>133.0 290.25</b> (091°-270°)	TOWER <b>135.025 291.1</b>	GND CON <b>124.55 275.8</b>	CLNC DEL <b>124.55 275.8</b>
------------------------------	---	-------------------------------	--------------------------------	---------------------------------



SE-2, 20 FEB 2025 to 20 MAR 2025

SE-2, 20 FEB 2025 to 20 MAR 2025

EMERG SAFE ALT 100 NM 5300



CATEGORY	A	B	C	D
CIRCLING *	840-1	622 (700-1)	920-2 702 (800-2)	1060-2¾ 842 (900-2¾)

HIRL Rwy 5-23  
LIRL Rwy 050°-230°  
REIL Rwy 5

# TACAN-A