

# ILS RWY 6 (CAT II)

MC GUIRE FLD,

AL-150 [USAF]

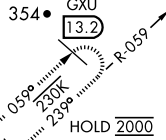
(JOINT BASE MC GUIRE DIX LAKEHURST) (KWRI)

LOC I-WRI <b>110.1</b>	APCH CRS <b>058°</b>	Rwy Idg <b>10,014</b> TDZE <b>131</b> Arpt Elev <b>141</b>
---------------------------	-------------------------	--

RADAR or DME required to identify the FAF.		ALSIF-2	MISSED APPROACH: Climb to 2000 via GXU R-059 to DAYYO and hold. Alternate Missed Approach instructions: Climb to 2000 via GXU R-059 to DAYYO, expect further clearance from ATC.	
--	--	---------	--	--

ATIS <b>110.6 270.1</b>	MC GUIRE APP CON/DEP CON <b>126.475 363.8</b>	MC GUIRE TOWER <b>118.65 255.6</b>	GND CON <b>121.8 275.8</b>	CLNC DEL <b>135.2 335.8</b>	PAR
----------------------------	--	---------------------------------------	-------------------------------	--------------------------------	-----

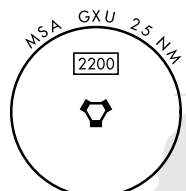
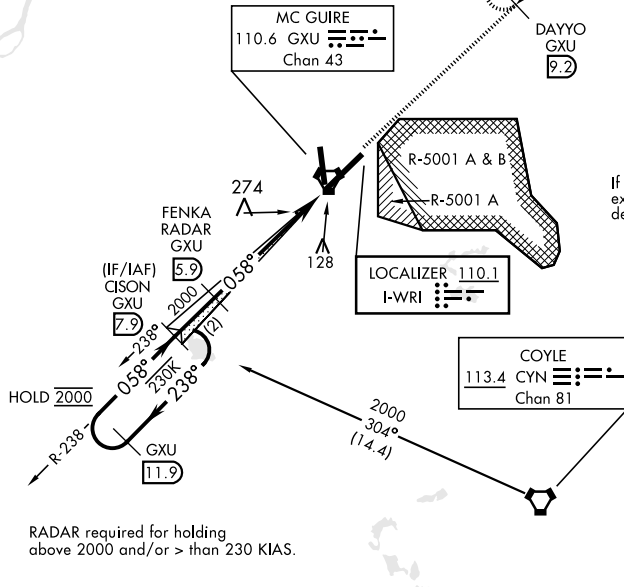
## CATEGORY II ILS - SPECIAL AIRCREW & AIRCRAFT CERTIFICATION REQUIRED



Missed Approach holding at DAYYO NA when R-5001 is active with aerial gunnery.

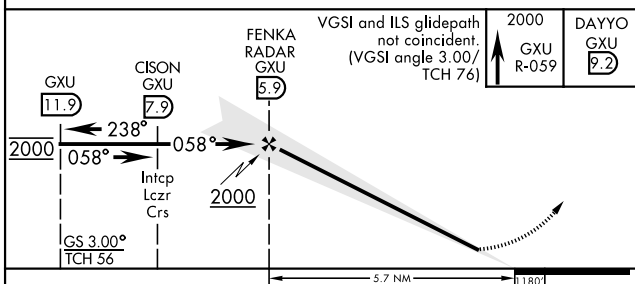
## RADAR REQUIRED WHEN R-5001 IS ACTIVE

If RADAR inoperative, expect 15 min delay for deactivation of R-5001.

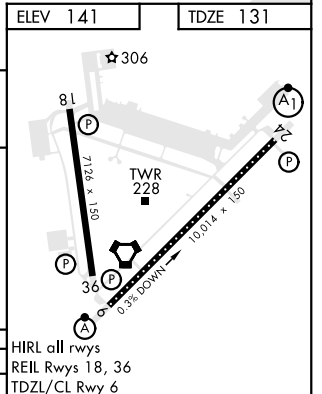
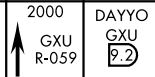


RADAR required for holding above 2000 and/or > than 230 KIAS.

EMERG SAFE ALT 100 NM 5100 FROM GXU VORTAC



VGSI and ILS glidepath not coincident. (VGSI angle 3.00°/TCH 76)



HIRL all rwys  
REIL Rwy 18, 36  
TDZL/CL Rwy 6

CATEGORY	A	B	C	D	E
S-ILS 6		RA 91/12	100	DA 231	

# ILS RWY 6 (CAT II)

NE-2, 20 FEB 2025 to 20 MAR 2025

NE-2, 20 FEB 2025 to 20 MAR 2025