

ILS or LOC RWY 6

MC GUIRE FLD,

AL-150 [USAF] (JOINT BASE MC GUIRE DIX LAKEHURST) (KWRI)

LOC I-WRI 110.1	APCH CRS 058°	Rwy Idg 10,014 TDZE 131 Arpt Elev 141
---------------------------	-------------------------	--

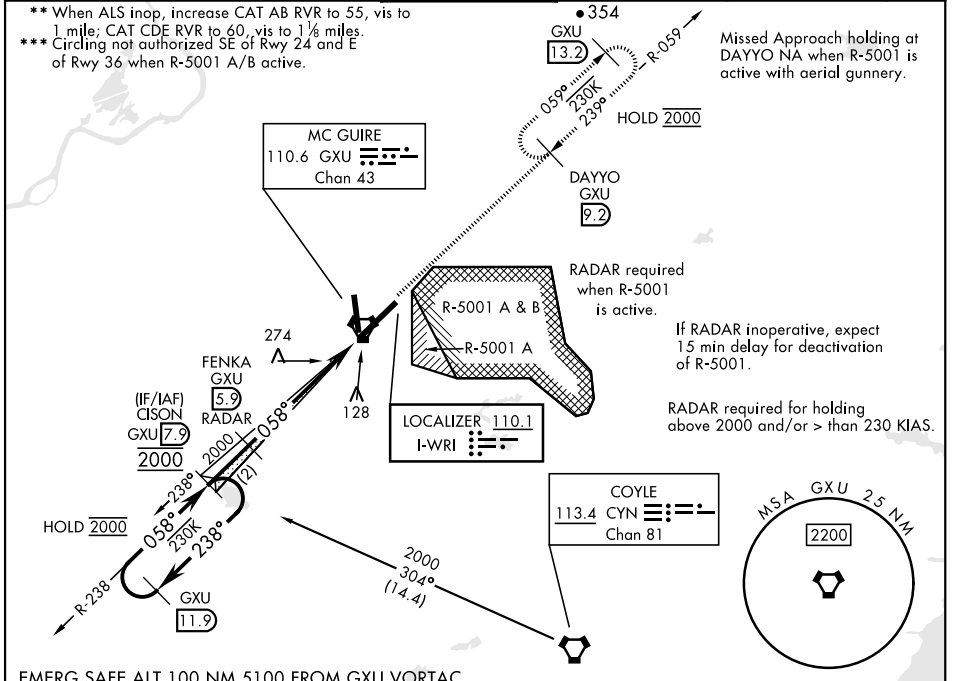
RADAR or DME required to identify the FAF.

ALSF-2

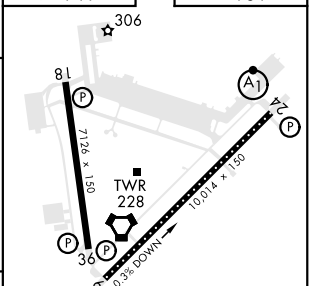
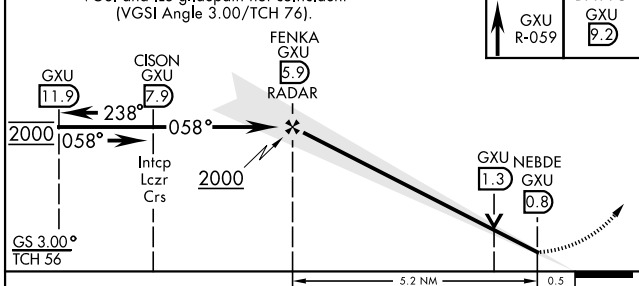
MISSED APPROACH: Climb to 2000 via GXU R-059 to DAYYO and hold.
Alternate Missed Approach Instruction: Climb to 2000 via GXU R-059 to DAYYO, expect further clearance from ATC.

* When TDZL/CL inop, increase RVR to 24; RVR 18 still authorized with use of FD or AP or HUD to DA. When ALS inop, increase RVR to 40, vis to ¼ mile.

ATIS 110.6 270.1	MC GUIRE APP CON/DEP CON 126.475 363.8	MC GUIRE TOWER 118.65 255.6	GND CON 121.8 275.8	CLNC DEL 135.2 335.8	PAR
----------------------------	--	---------------------------------------	-------------------------------	--------------------------------	-----



EMERG SAFE ALT 100 NM 5100 FROM GXU VORTAC



	ELEV 141		TDZE 131		
	GXU R-059		DAYYO GXU 9.2		
CATEGORY	A	B	C	D	E
S-ILS 6 *	331/18		200	(200-½)	
S-LOC 6 **	540/24	409 (400-½)	540/40	409	(400-¾)
CIRCLING ***	680-1	539 (600-1)	700-1½ 559 (600-1½)	700-2 559 (600-2)	1200-3 1059 (1100-3)
	FAF to MAP 5.2 NM				
	Knots	60	90	120	150 180
	Min:Sec	5:12	3:28	2:36	2:05 1:44

WRIGHTSTOWN, NEW JERSEY 40°01'N-74°36'W MC GUIRE FLD,
Amtd 5 18MAY23 (JOINT BASE MC GUIRE DIX LAKEHURST) (KWRI)

ILS or LOC RWY 6

NE-2, 20 FEB 2025 to 20 MAR 2025

NE-2, 20 FEB 2025 to 20 MAR 2025