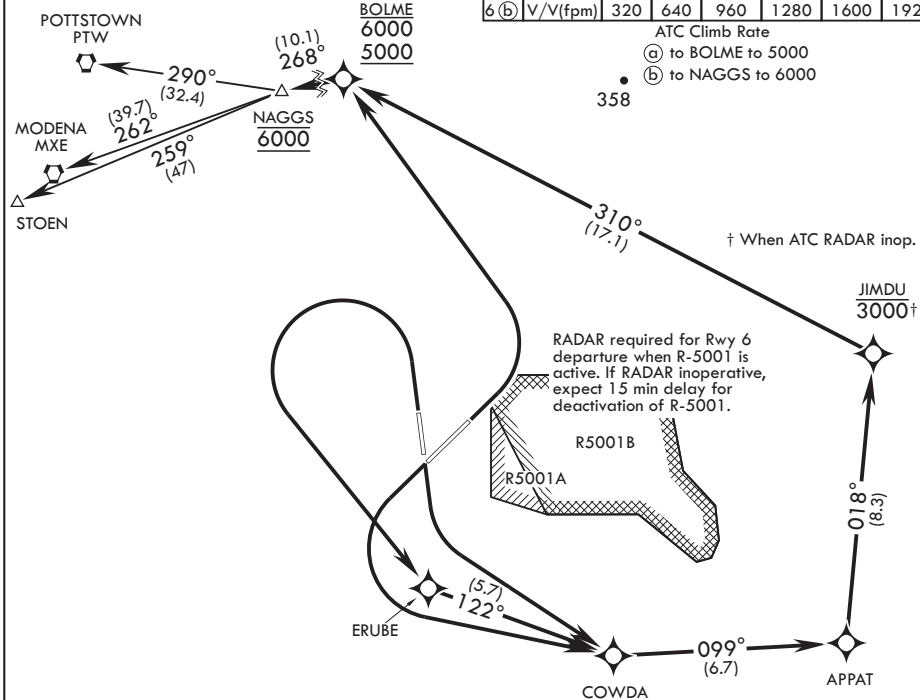


MC GUIRE APP CON/DEP CON
 126.475 363.8

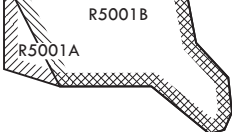
RNAV1 - GPS

Rwy	Knots	60	120	180	240	300	360
6 (a)	V/V(fpm)	424	848	1272	1696	2120	2544
6 (b)	V/V(fpm)	320	640	960	1280	1600	1920

ATC Climb Rate
 (a) to BOLME to 5000
 (b) to NAGGS to 6000



RADAR required for Rwy 6 departure when R-5001 is active. If RADAR inoperative, expect 15 min delay for deactivation of R-5001.



NE-2, 20 FEB 2025 to 20 MAR 2025

NE-2, 20 FEB 2025 to 20 MAR 2025

DEPARTURE ROUTE DESCRIPTION

TAKEOFF RWY 6: Climbing left turn direct to cross BOLME at or above 5000 and at or below 6000, then track as depicted to NAGGS at and maintain 6000, thence...

TAKEOFF RWY 18: Climbing left turn direct COWDA, then track as depicted to cross NAGGS at and maintain 6000, thence...

TAKEOFF RWY 24: Climbing left turn direct COWDA, then track as depicted to cross NAGGS at and maintain 6000, thence...

TAKEOFF RWY 36: Climbing left turn direct ERUBE, then track as depicted to cross NAGGS at and maintain 6000, thence...

...as depicted on assigned transition. Expect further clearance from ATC.

ALTERNATIVE: Initial RADAR vector climb-out option to rejoin RNAV routing at BOLME at or above 5000. All runways: Fly runway heading, maintain 6000. Request RADAR vector departure option with CLNC DEL upon initial contact.

POTTSOWN TRANSITION (NAGGS2.PTW):

MODENA TRANSITION (NAGGS2.MXE):

STOEN TRANSITION (NAGGS2.STOEN):