

WRIGHTSTOWN, NEW JERSEY

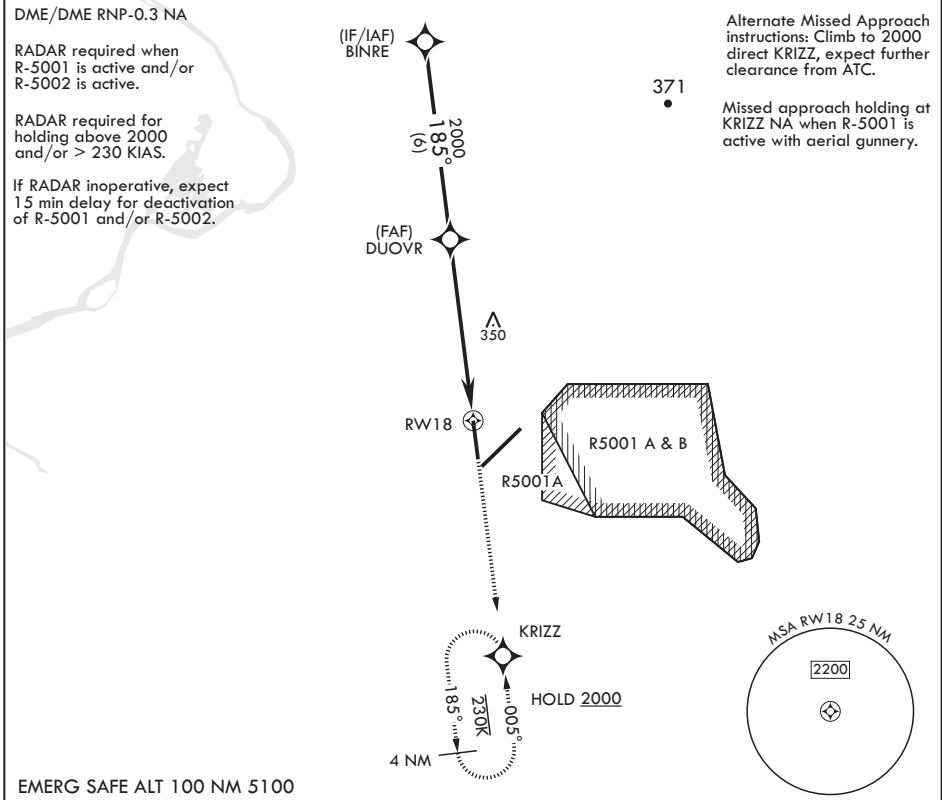
# RNAV (GPS) RWY 18

APCH CRS	Rwy Idg	7126
185°	TDZE	123
	Arpt Elev	141

AL-150 (USAF)  
MC GUIRE FIELD (JOINT BASE MC GUIRE DIX LAKEHURST) (KWRI)

**V**\* Circling NA SE of Rwy 24 and E of Rwy 36 when R-5001 A/B Active. MISSED APPROACH: Climb to 2000 direct KRIZZ and hold.

ATIS	MC GUIRE APP CON/DEP CON	TOWER	GND CON	CLNC DEL	PAR
110.6 270.1	126.475 363.8	118.65 255.6	121.8 275.8	135.2 335.8	



BINRE		DUOVR		RWY 18	
2000		2000		1.3 NM to RWY 18	
3.10° TCH 68		5.5 NM		5.5 NM	
CATEGORY	A	B	C	D	E
LNAV MDA	600-1	477 (500-1)	600-1½	477 (500-1½)	
<b>C</b> CIRCLING*	680-1	539 (600-1)	700-1½ 559 (600-1½)	700-2 559 (600-2)	1200-3 1059 (1100-3)

2000

KRIZZ

ELEV 141

BCN 306

TWR 228

7126 x 150

10014 x 150

0.3% UP

TDZE 123

HIRL all Rwy's  
REIL Rwy's 18, 36  
TDZL/CL Rwy 6

NE-2, 20 FEB 2025 to 20 MAR 2025

NE-2, 20 FEB 2025 to 20 MAR 2025

WRIGHTSTOWN, NEW JERSEY

MC GUIRE FIELD (JOINT BASE MC GUIRE DIX LAKEHURST) (KWRI)

Amdt 6 18MAY23

40°01'N - 74°36'W

# RNAV (GPS) RWY 18