

VOR/DME or TACAN RWY 18

MC GUIRE FLD,
(JOINT BASE MC GUIRE DIX LAKEHURST) (KWRI)

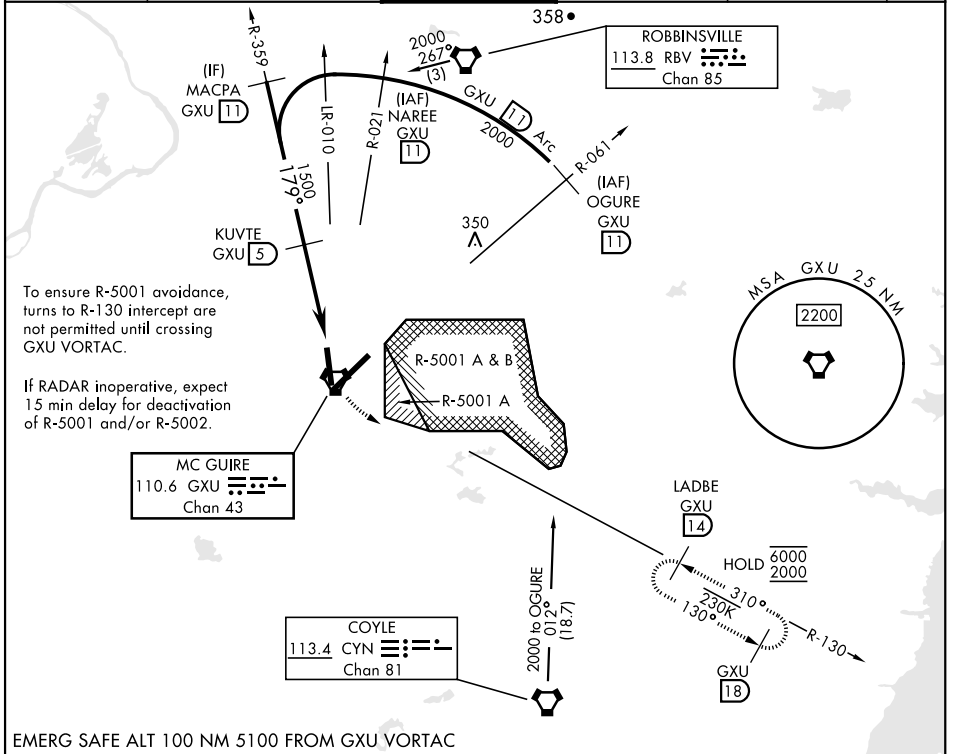
VORTAC GXU 110.6 Chan 43	APCH CRS 179°	Rwy ldg 7126 TDZE 123 Arprt Elev 141
--	-------------------------	---

AL-150 [USAF]

(JOINT BASE MC GUIRE DIX LAKEHURST) (KWRI)

RADAR required when R-5001 and/or R-5002 is active.		MISSED APPROACH: Climb to 2000 via GXU VORTAC R-130 to LADBE and hold, DO NOT turn prior to GXU.		
<p>▼ * Circling NA SE of RWY 24 and E of RWY 36 when R-5001 A/B active.</p>				

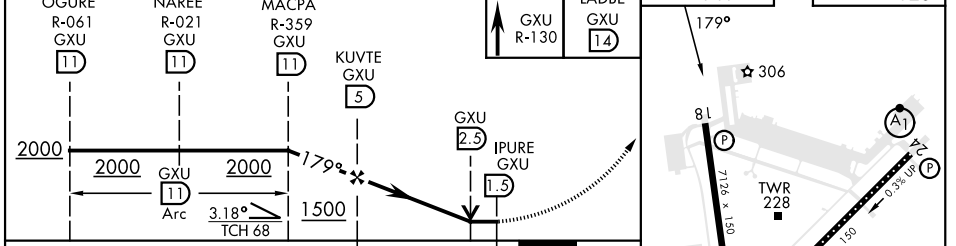
ATIS 110.6 270.1	MC GUIRE APP CON/DEP CON 126.475 363.8	MC GUIRE TOWER 118.65 255.6	GND CON 121.8 275.8	CLNC DEL 135.2 335.8	PAR
----------------------------	--	---------------------------------------	-------------------------------	--------------------------------	-----



NE-2, 20 FEB 2025 to 20 MAR 2025

NE-2, 20 FEB 2025 to 20 MAR 2025

EMERG SAFE ALT 100 NM 5100 FROM GXU VORTAC



	OGURE R-061 GXU 11	NAREE R-021 GXU 11	MACPA R-359 GXU 11	KUVTE GXU 5	2000 GXU R-130 14	LADBE GXU 14	ELEV 141	TDZE 123
CATEGORY	A	B	C	D	E			
S-18	640-1	517 (500-1)	640-1½	517 (500-1½)				
CIRCLING*	680-1	539 (600-1)	700-1½ 559 (600-1½)	700-2 559 (600-2)	1200-3 1059 (1100-3)			

WRIGHTSTOWN, NEW JERSEY 40°01'N-74°36'W MC GUIRE FLD,
Amdt 8 18MAY23 (JOINT BASE MC GUIRE DIX LAKEHURST) (KWRI)

VOR/DME or TACAN RWY 18

HIRL all rwy
REIL Rwy 18, 36
TDZL/CL Rwy 6