

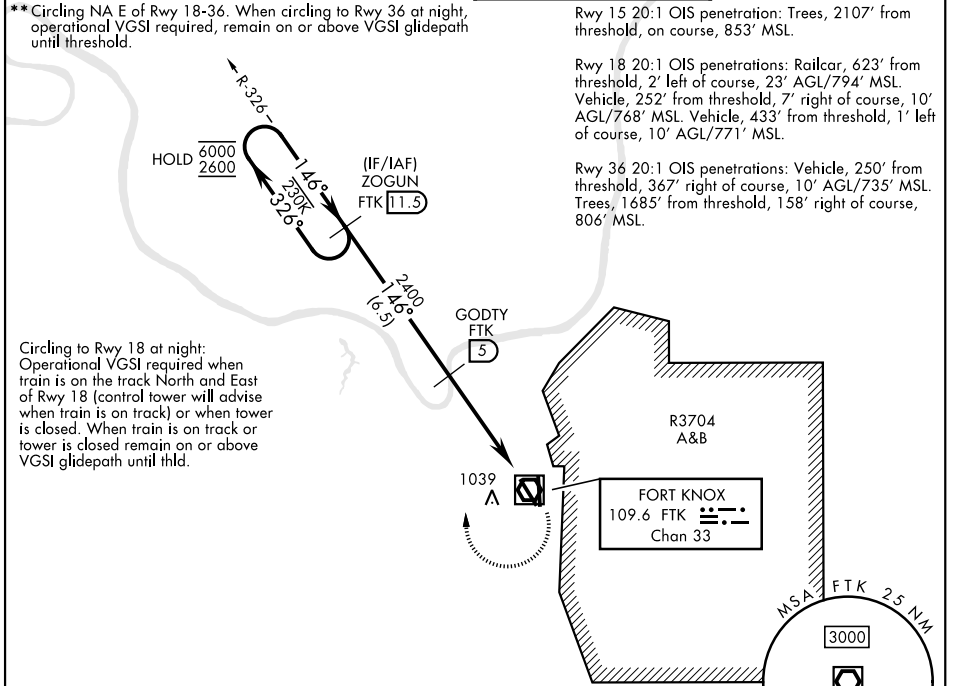
# VOR/DME RWY 15

VOR/DME FTK <b>109.6</b> Chan <b>33</b>	APCH CRS <b>146°</b>	Rwy Ildg TDZE <b>4853</b> <b>754</b> Arprt Elev <b>754</b>
---	-------------------------	---

AL-151 [USA]

GODMAN AAF (KFTK)

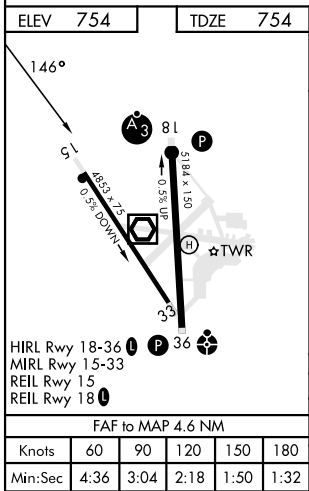
<p>▼ * NA at night. Visibility reduction by helicopters NA.</p>		<p>MISSED APPROACH: Climb to 1300, then climbing right turn to 2600 on heading 356° and FTK VOR/DME R-326 to ZOGUN INT/FTK 11.5 DME and hold.</p>	
<p>ATIS <b>109.6</b></p>	<p>LOUISVILLE APP CON <b>132.075 327.0</b></p>	<p>TOWER ★ <b>133.35 (CTAF) 0</b></p>	<p>GND CON <b>121.9 239.3</b></p>



**Circling to Rwy 18 at night:**  
Operational VGSI required when train is on the track North and East of Rwy 18 (control tower will advise when train is on track) or when tower is closed. When train is on track or tower is closed remain on or above VGSI glidepath until thld.

SE-1, 20 FEB 2025 to 20 MAR 2025

SE-1, 20 FEB 2025 to 20 MAR 2025



	1027		1300		2600	
	ZOGUN 11.5		GODTY 5		VOR/DME	
One Minute Holding Pattern	2600	326°	146°	2400	3.30°	TCH 45
	CATEGORY		A	B	C	D
S-15*	1240-1	486 (500-1)	1240-1 <sup>3</sup> / <sub>8</sub>	486 (500-1 <sup>3</sup> / <sub>8</sub> )		
☑ CIRCLING**	1340-1	586 (600-1)	1340-1 <sup>1</sup> / <sub>2</sub>	586 (600-1 <sup>1</sup> / <sub>2</sub> )	1340-2	586 (600-2)

# VOR/DME RWY 15