

FORT KNOX, KENTUCKY

# VOR/DME RWY 36

VOR/DME FTK <b>109.6</b> Chan <b>33</b>	APCH CRS <b>349°</b>	Rwy Idg TDZE <b>5184</b> <b>740</b> Arprt Elev <b>754</b>
---	-------------------------	--

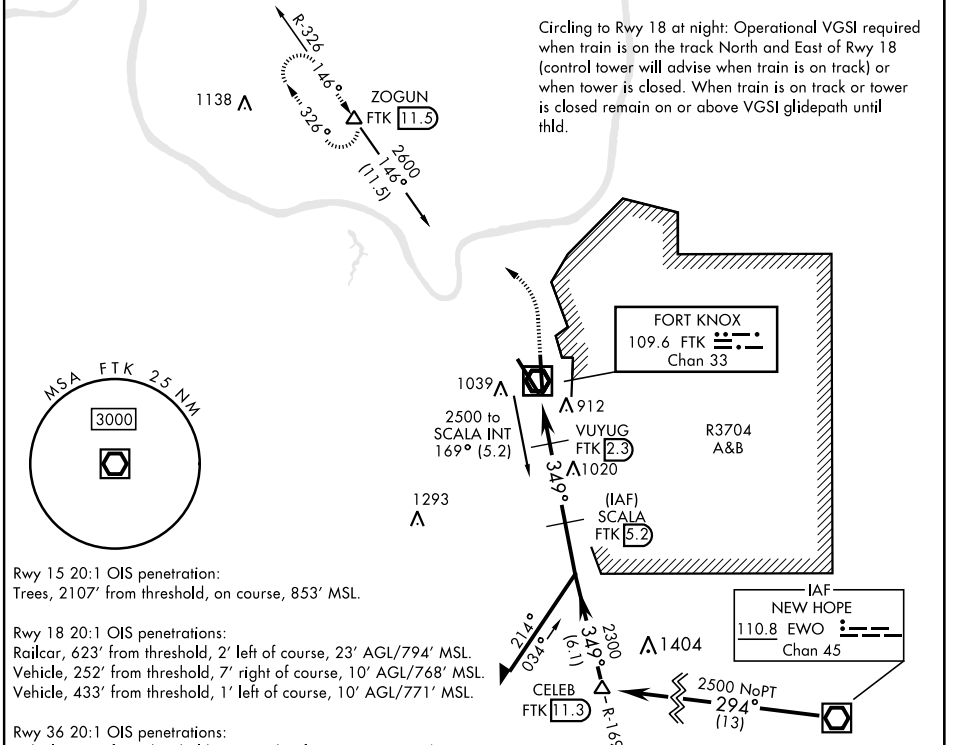
AL-151 [USA]

GODMAN AAF (KF TK)

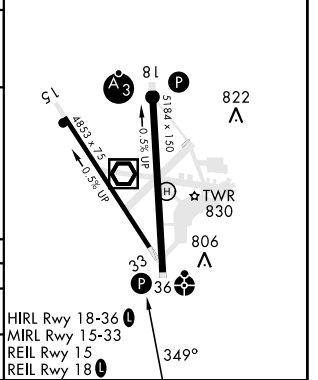
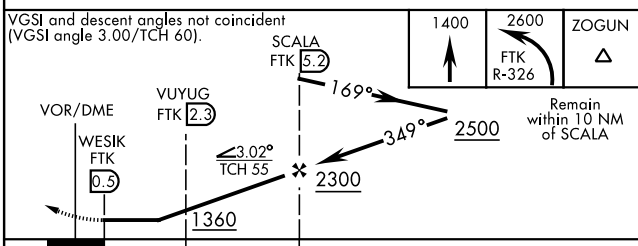
▼ \* At night, operational VGSI required, remain on or above VGSI glidepath until threshold.  
 Visibility reduction by helicopters not authorized.  
 \*\* Circling NA E of Rwy 18-36. Circling to rwy 15 NA at night.

ODALS  
 MISSED APPROACH: Climb to 1400, then climbing left turn to 2600 on FTK VOR/DME R-326 to ZOGUN INT/FTK 11.5 DME and hold.

ATIS <b>109.6</b>	LOUISVILLE APP CON <b>132.075 327.0</b>	TOWER ★ <b>133.35</b> (CTAF) <b>0</b>	GND CON <b>121.9 239.3</b>
----------------------	--	--	-------------------------------



ELEV <b>754</b>	TDZE <b>740</b>
-----------------	-----------------



CATEGORY	A	B	C	D
S-36*	1180-1 440 (500-1)		1180-1¼ 440 (500-1¼)	
CIRCLING**	1340-1 586 (600-1)		1340-1½ 586 (600-1½)	1340-2 586 (600-2)

HIRL Rwy 18-36 **0**  
 MIRL Rwy 15-33  
 REIL Rwy 15  
 REIL Rwy 18 **0**

FORT KNOX, KENTUCKY  
Amdt 2 10AUG23

37°54'N-85°58'W

GODMAN AAF (KF TK)

# VOR/DME RWY 36

SE-1, 20 FEB 2025 to 20 MAR 2025

SE-1, 20 FEB 2025 to 20 MAR 2025