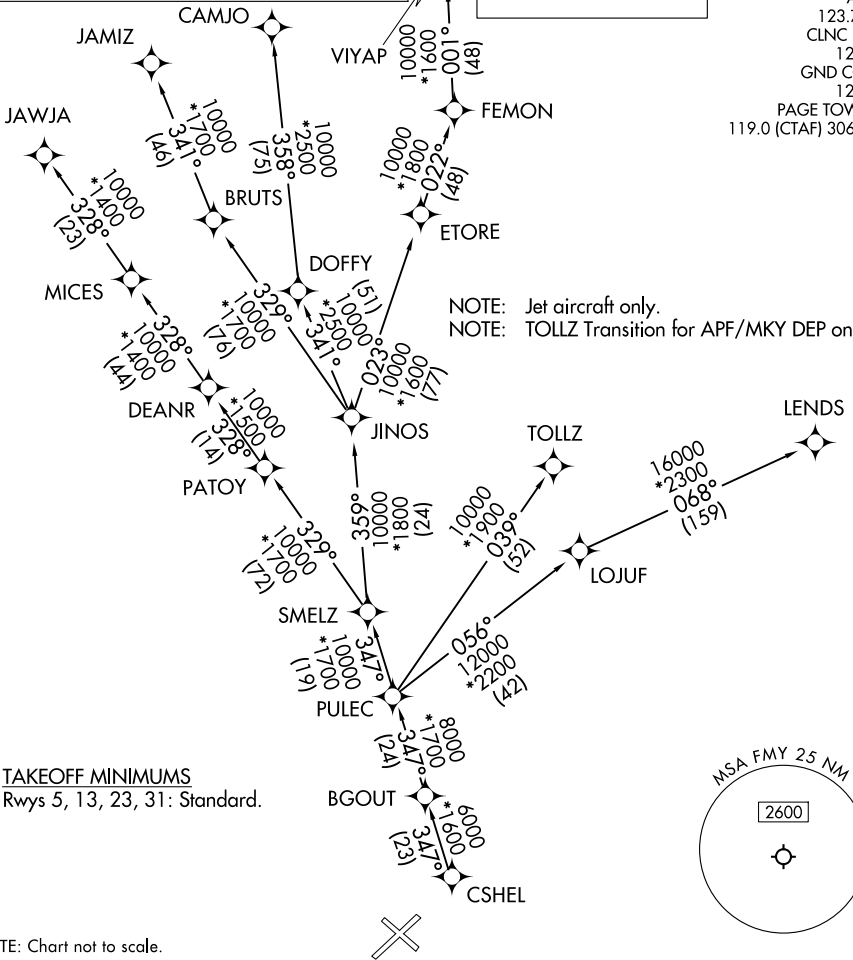


CSHEL SEVEN DEPARTURE (RNAV)

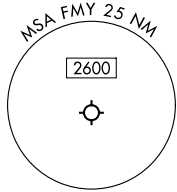
RNAV 1 - DME/DME/IRU or GPS.
RADAR required for non-GPS equipped aircraft.

**TOP ALTITUDE:
2000**

FORT MYERS DEP CON*
126.8 306.2
ATIS
123.725
CLNC DEL
121.7
GND CON
121.7
PAGE TOWER*
119.0 (CTAF) 306.95



TAKEOFF MINIMUMS
Rwys 5, 13, 23, 31: Standard.



NOTE: Chart not to scale.

DEPARTURE ROUTE DESCRIPTION

TAKEOFF RUNWAYS 5, 13, 23, 31: Climb on assigned heading for RADAR vectors to CSHEL, thence...
 ... on assigned transition. Maintain 2000. Expect clearance to filed altitude within 10 minutes after departure.

CAMJO TRANSITION (CSHEL7.CAMJO)
JAMIZ TRANSITION (CSHEL7.JAMIZ)
JAWJA TRANSITION (CSHEL7.JAWJA)
LEND S TRANSITION (CSHEL7.LEND S)
TOLLZ TRANSITION (CSHEL7.TOLLZ)
VIYAP TRANSITION (CSHEL7.VIYAP)

SE-3, 20 FEB 2025 to 20 MAR 2025

SE-3, 20 FEB 2025 to 20 MAR 2025