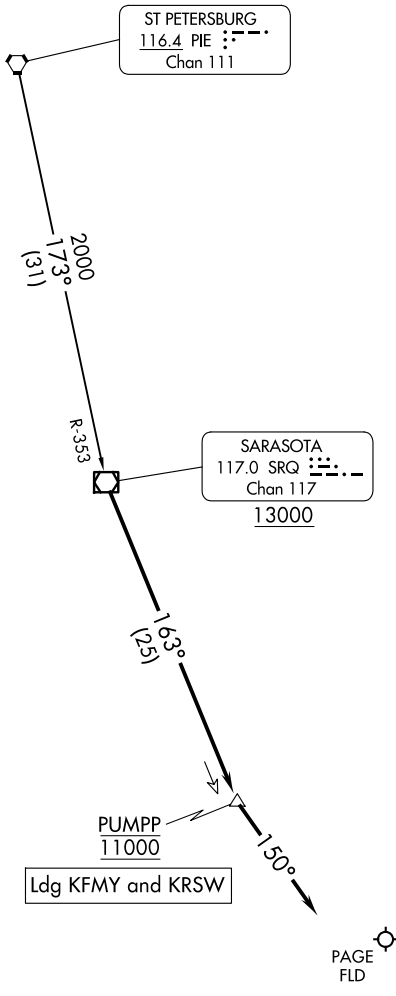


# PUMPP ONE ARRIVAL

FORT MYERS, FLORIDA

FORT MYERS APP CON ★  
 134.425 306.2  
 FMY ATIS  
 123.725  
 RSW D-ATIS  
 124.65

RADAR required.  
 DME required.



SE-3, 20 FEB 2025 to 20 MAR 2025

SE-3, 20 FEB 2025 to 20 MAR 2025

NOTE: Chart not to scale.

## ARRIVAL ROUTE DESCRIPTION

ST PETERSBURG TRANSITION (PIE.PUMPP1): From over PIE VORTAC on PIE R-173 and SRQ R-353 to SRQ VOR/DME, thence. . .

. . .from over SRQ VOR/DME on SRQ R-163 to cross PUMPP at 11000, then on heading 150°. Expect RADAR vectors to final approach course.

# PUMPP ONE ARRIVAL

FORT MYERS, FLORIDA