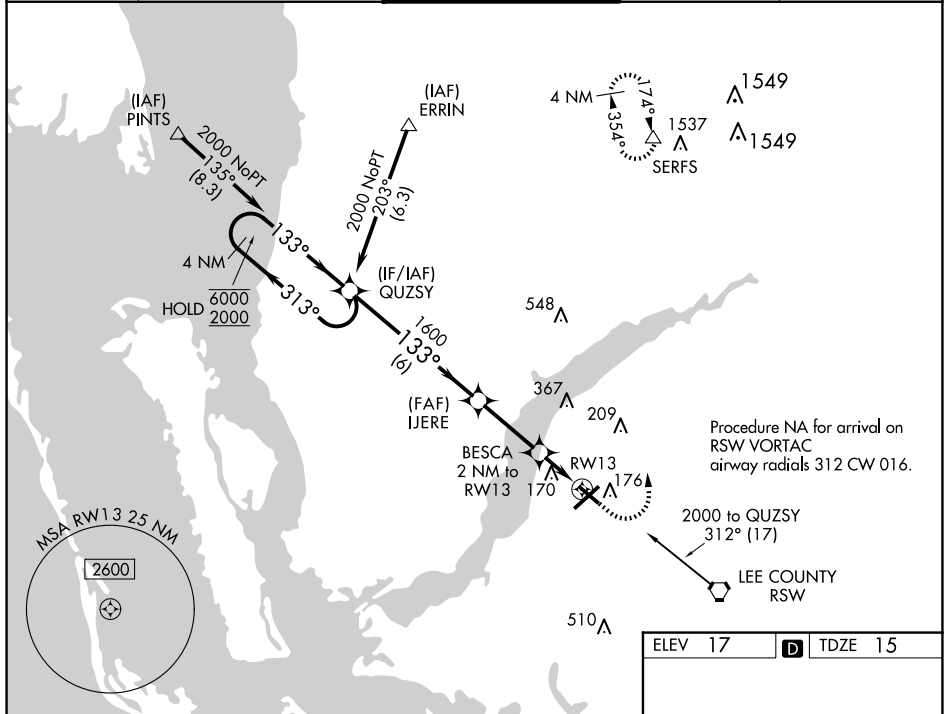


WAAS CH <b>73024</b> <b>W13A</b>	APP CRS <b>133°</b>	Rwy Idg <b>4296</b> TDZE <b>15</b> Apt Elev <b>17</b>
--	------------------------	---

# RNAV (GPS) RWY 13

PAGE FLD (FMYY)

RNP APCH.		MISSED APPROACH: Climb to 500 then climbing left turn to 2600 direct SERFS and hold.		
ATIS <b>123.725</b>	FORT MYERS APP CON ★ <b>125.15 306.2</b> (Rwys 5, 13) <b>126.8 306.2</b> (Rwys 23, 31)	PAGE TOWER ★ <b>119.0</b> (CTAF) <b>306.95</b>	GND CON <b>121.7</b>	CLNC DEL <b>121.7</b>



SE-3, 20 FEB 2025 to 20 MAR 2025

SE-3, 20 FEB 2025 to 20 MAR 2025

4 NM Holding Pattern		QUZSY	500	2600	SERFS
6000 ← 313°		IJERE 1600	BESCA 2 NM to RWY13	*LNNAV only.	△
2000 → 133°					
GP 3.00° TCH 30		1600	*1.4 NM to RWY13		
		*680			
		6 NM	2.9 NM	0.6 NM	1.4 NM
CATEGORY	A	B	C	D	
LPV DA		265-1	250 (300-1)		
LNNAV/VNAV DA		480-1½	465 (500-1½)		
LNNAV MDA	480-1	465 (500-1)	480-1½	465 (500-1½)	
<b>C</b> CIRCLING	540-1	523 (600-1)	600-1½ 583 (600-1½)	680-2 663 (700-2)	

ELEV 17	<b>D</b> TDZE 15
---------	------------------

Inset diagram showing the airport layout with runways 13, 31, 5, and 23, and tower location. Runway 13 is 2406' x 150'. Runway 31 is 2910' x 150'. Runway 5 is 2406' x 150'. Runway 23 is 2910' x 150'. Tower is at 100 feet. SERFS is at 1537 and 1549. LEE COUNTY RSW is 2000 to QUZSY 312° (17).

REIL Rwys 5, 13, 23 and 31 **1**  
MIRL Rwy 5-23 and 13-31 **1**