

WAAS CH 69424 W23A	APP CRS 231°	Rwy Idg TDZE 16 Apt Elev 17	5545
--	------------------------	---	-------------

RNAV (GPS) RWY 23

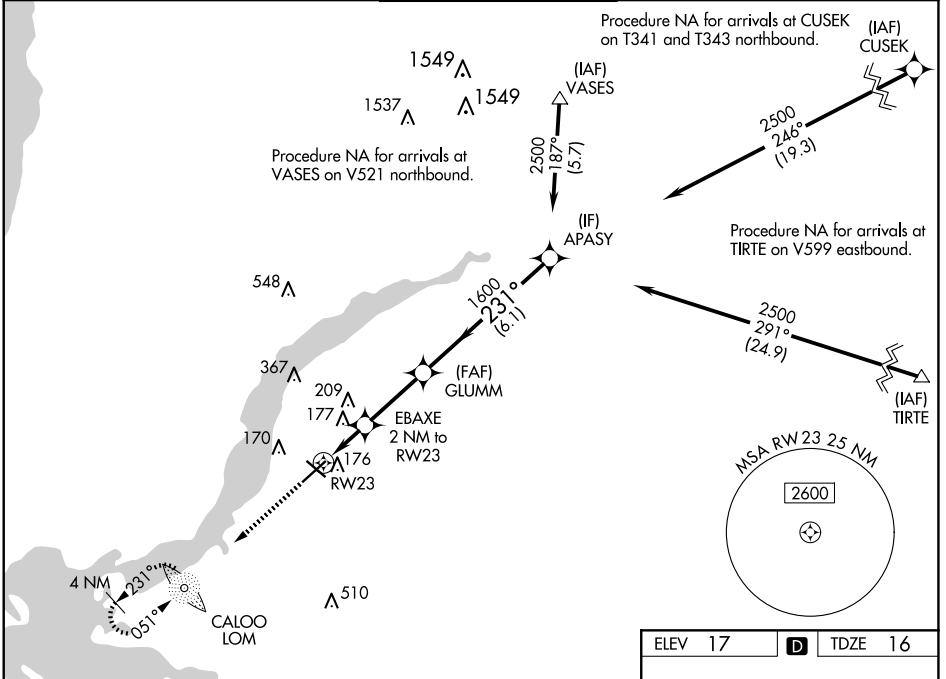
PAGE FLD (FMY)

RNP APCH - GPS.

⚠ Rwy 23 helicopter visibility reduction below 3/4 SM NA. When Circling to Rwy 31 at night, operational VGSI required, remain on or above VGSI glidepath until threshold.
⚠ For uncompensated Baro-VNAV systems, LNAV/VNAV NA below 5°C or above 54°C.

MISSED APPROACH: Climb to 2000 direct CALOO LOM and hold, continue climb-in-hold.

ATIS 123.725	FORT MYERS APP CON ★ 125.15 306.2 (Rwys 5, 13) 126.8 306.2 (Rwys 23, 31)	PAGE TOWER ★ 119.0 (CTAF) 0 306.95	GND CON 121.7	CLNC DEL 121.7
------------------------	--	---	-------------------------	--------------------------



SE-3, 20 FEB 2025 to 20 MAR 2025

SE-3, 20 FEB 2025 to 20 MAR 2025

2000	CALOO				
CATEGORY	A	B	C	D	
LPV DA	278-7/8		262 (300-7/8)		
LNAV/VNAV DA	392-1		376 (400-1)		
LNAV MDA	440-1	424 (500-1)	440-1 1/4	424 (500-1 1/4)	
C CIRCLING	540-1	523 (600-1)	600-1 1/2	680-2	663 (700-2)

