

# VOR RWY 4

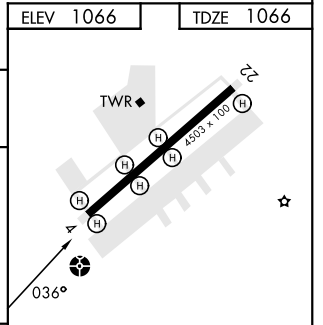
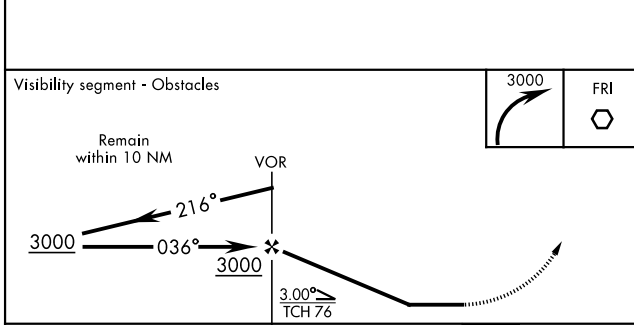
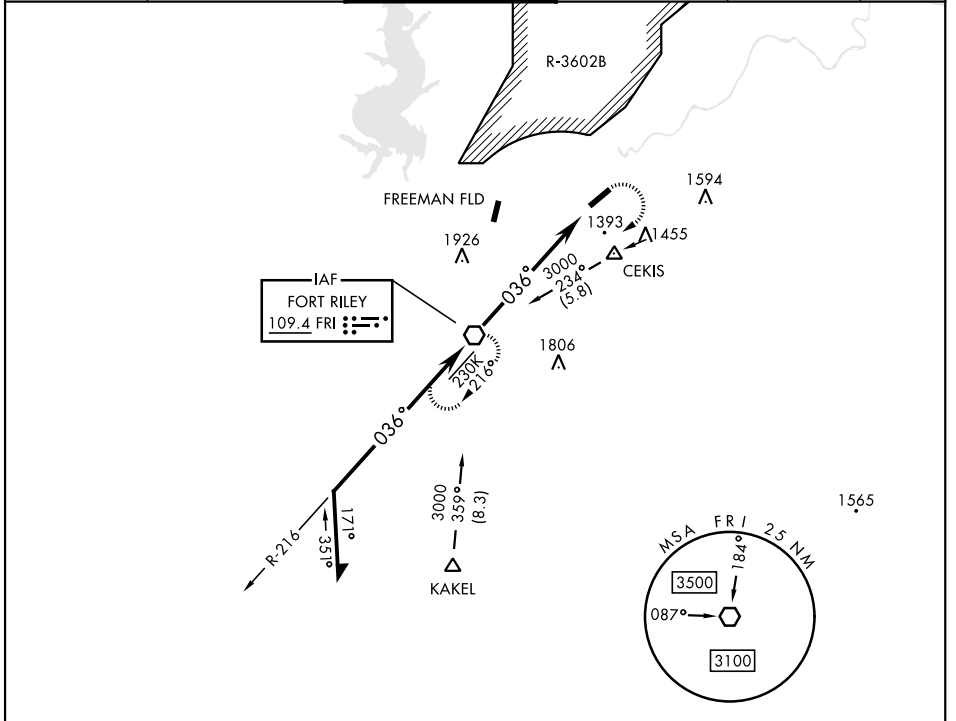
VOR FRI <b>109.4</b>	APCH CRS <b>036°</b>	Rwy ldg 4503 TDZE 1066 Arpt Elev 1066
-------------------------	-------------------------	--

AL-155 [USA]

MARSHALL AAF (KFRI)

<p><b>▼</b> * Circling not authorized NW of Rwy 4-22. Rwy 4 helicopter visibility reduction below 3/4 mile not authorized.</p>	<p>ODALS</p>	<p>MISSED APPROACH: Climbing right turn to 3000 direct FRI VOR and hold.</p>
--	--------------	--

ATIS ★ <b>121.025</b>	MARSHALL GCA <b>121.25 254.35</b>	TOWER ★ <b>126.2 (CTAF) 248.65</b>	GND CON <b>140.20 229.4</b>	CLNC DEL <b>119.65</b>	ASR/PAR
--------------------------	--------------------------------------	---------------------------------------	--------------------------------	---------------------------	---------



CATEGORY	A		B		C		D	
	S-4	1800-1	734	(800-1)	1800-2	734	(800-2)	
<b>C</b> CIRCLING *	1800-1	734	(800-1)	1800-2	734 (800-2)	1900-2 3/4	834 (900-2 3/4)	

ELEV 1066		TDZE 1066	
HIRL Rwy 4-22 <b>0</b>			
FAF to MAP 6.3 NM			
Knots	60	90	120 150 180
Min:Sec	6:18	4:12	3:09 2:31 2:06

# VOR RWY 4

NC-2, 20 FEB 2025 to 20 MAR 2025

NC-2, 20 FEB 2025 to 20 MAR 2025