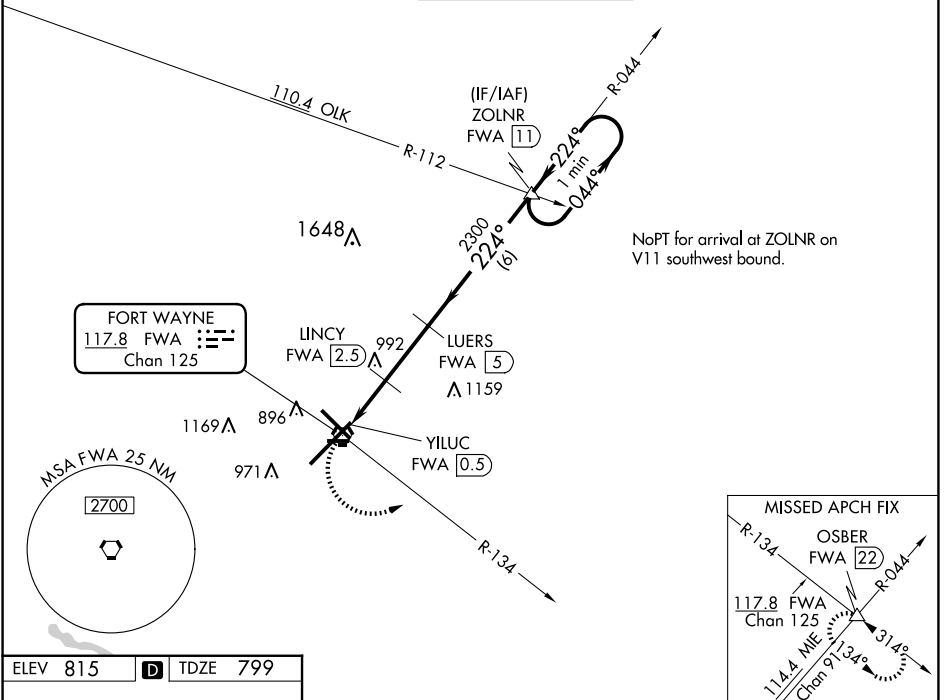


VORTAC FWA 117.8 Chan 125	APP CRS 224°	Rwy Idg TDZE Apt Elev	11981 799 815
--	------------------------	-----------------------------	--

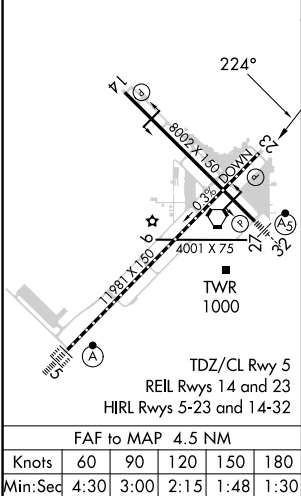
VOR or TACAN RWY 23

FORT WAYNE INTL (FWA)

 ASR		MISSED APPROACH: Climbing left turn to 3000 on FWA VORTAC R-134 to OSBER INT/FWA 22 DME and hold.		
ATIS 121.25 360.825	FORT WAYNE APP CON 127.2 284.6	FORT WAYNE TOWER 119.1 269.325	GND CON 121.9 348.6	CLNC DEL 124.75



ELEV 815	D	TDZE 799
----------	----------	----------



	OSBER FWA R-134	LINCYN FWA 2.5	LUERS FWA 5	ZOLNR FWA 11	One Minute Holding Pattern
					044° → 3000
					← 224°
					VGSi and descent angles not coincident (VGSi Angle 3.00/TCH 76).
CATEGORY	A	B	C	D	E
S-23	1400/55	601 (600-1)	1400-1¾	601 (600-1¾)	
C CIRCLING	1400-1	585 (600-1)	1420-1¾ 605 (700-1¾)	1520-2¼ 705 (800-2¼)	1520-2½ 705 (800-2½)
LINCYN FIX MINIMUMS					
S-23	1300/55	501 (500-1)	1300-1¾	501 (500-1¾)	
C CIRCLING	1300-1	485 (500-1)	1420-1¾ 605 (700-1¾)	1520-2¼ 705 (800-2¼)	1520-2½ 705 (800-2½)

EC-2, 20 FEB 2025 to 20 MAR 2025

EC-2, 20 FEB 2025 to 20 MAR 2025