

WAAS CH 69220 W13A	APP CRS 133°	Rwy Idg TDZE Apt Elev	2623 836 836
--	------------------------	-----------------------------	---

RNAV (GPS) RWY 13

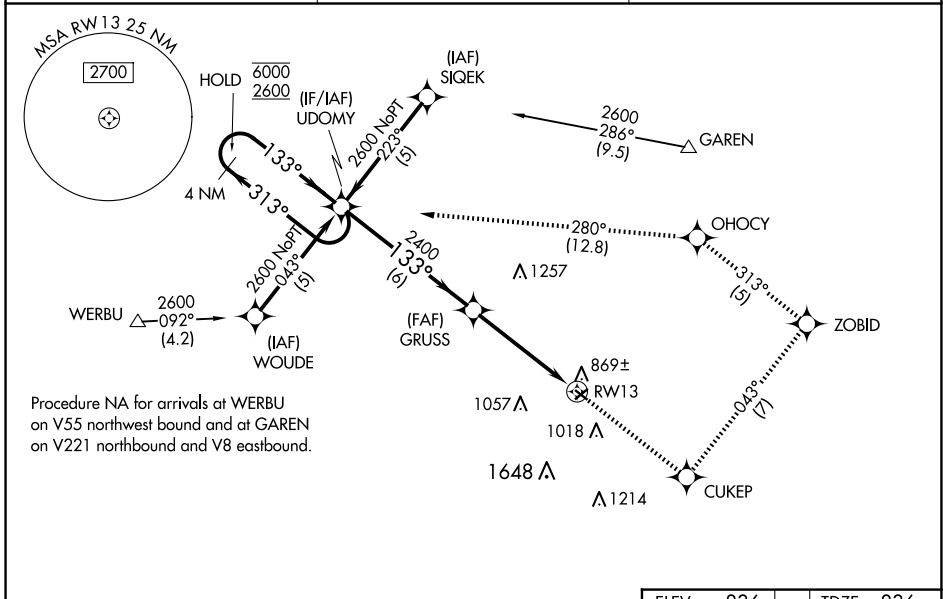
SMITH FLD (SMD)

RNP APCH.

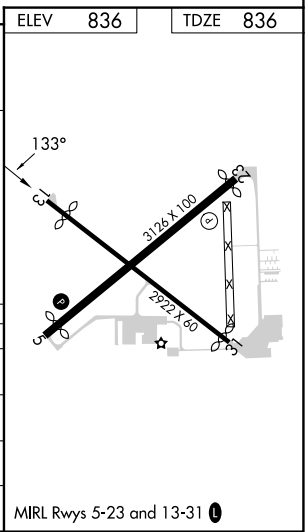
Procedure NA at night. Rwy 13 helicopter visibility reduction below 1 SM NA.
NA For uncompensated Baro-VNAV systems, LNAV/VNAV NA below -1.6°C or above 5.4°C. When local altimeter setting not received, use Fort Wayne Intl altimeter setting:
-22°C increase LPV DA to 1162 feet; LNAV/VNAV DA to 1435 feet; increase all MDA 40 feet and LNAV Cat C visibility ¼ SM. Baro-VNAV NA when using Fort Wayne Intl altimeter setting.

MISSED APPROACH: Climb to 2600 direct CUKEP and on track 043° to ZOBID and on track 313° to OHOCY and on track 280° to UDOMY and hold.

AWOS-3 124.55	FORT WAYNE APP CON 127.2 284.6	UNICOM 122.8 (CTAF)
-------------------------	--	-------------------------------



	2600	CUKEP	ZOBID	OHOCY	UDOMY
	↑	✧	✧	✧	✧
		tr 043°	tr 313°	tr 280°	
4 NM Holding Pattern	UDOMY				
6000	← 313°				
2600	→ 133°				
GP 3.00° TCH 40			GRUSS 2400		RWY 13
			6 NM	4.7 NM	
CATEGORY	A	B	C	D	
LPV DA		1135-1	299 (300-1)		NA
LNAV/VNAV DA		1408-2	572 (600-2)		NA
LNAV MDA	1340-1	504 (600-1)	1340-1½ 504 (600-1½)		NA
CIRCLING	1400-1	564 (600-1)	1940-3 1104 (1200-3)		NA



EC-2, 20 FEB 2025 to 20 MAR 2025

EC-2, 20 FEB 2025 to 20 MAR 2025