

DALLAS THREE DEPARTURE  
(DAL3 TTT) 25JAN24

FORT WORTH MEACHAM INTL (F'W)  
FORT WORTH, TEXAS

LONE STAR DEP CON  
118.1 306.95 (NORTH)  
135.975 379.9 (SOUTH)  
ATIS  
120.7  
CLNIC DEL  
124.65  
GND CON  
121.9  
MEACHAM TOWER  
118.3 257.8

RADAR and DME required.

NOTE: BELCHER Transition: For aircraft inbound to the JAN, MLU, and SHV terminal areas only.  
NOTE: SOLDO Transition: ATC assigned.

**TOP ALTITUDE:  
ASSIGNED BY ATC**

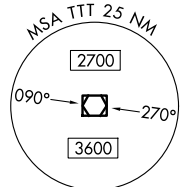
BONHAM  
114.6 BYP  
Chan 93

MAVERICK  
113.1 TTT  
Chan 78

GREGG COUNTY  
112.9 GGG  
Chan 76

LITTLE ROCK  
113.9 LIT  
Chan 86

TEXARKANA  
116.3 TXK  
Chan 110



**TAKEOFF MINIMUMS**

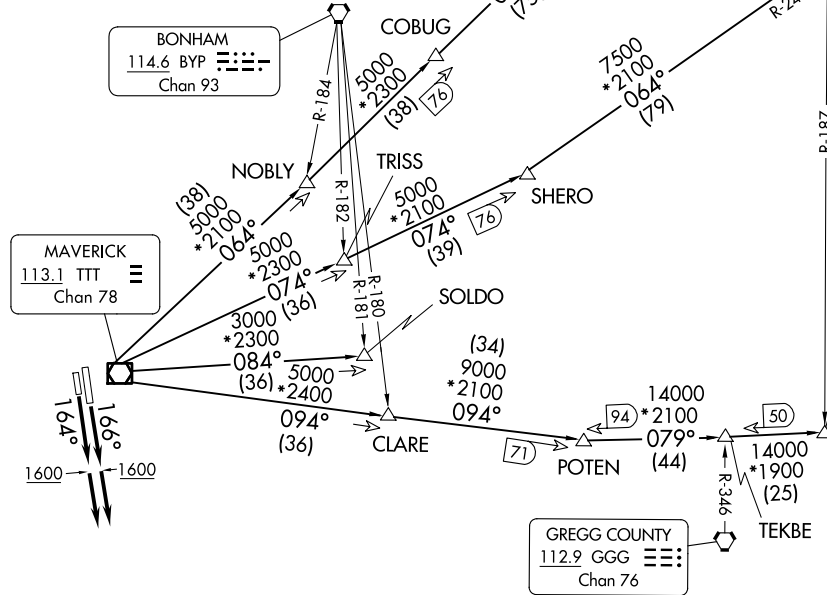
Rwys 16, 17: Standard.  
Rwy 34: 300-1 7/8 or standard with minimum climb of 225'/NM to 1100, or alternatively, with standard takeoff minimums and a normal 200'/NM climb gradient, takeoff must occur no later than 2000' prior to DER.  
Rwy 35: 300-1 1/4 or standard with minimum climb of 210'/NM to 900, or alternatively, with standard takeoff minimums and a normal 200'/NM climb gradient, takeoff must occur no later than 1300' prior to DER.



(DAL3 TTT) 24305  
DALLAS THREE DEPARTURE

AL-159 (FAA)

FORT WORTH MEACHAM INTL (F'W)  
FORT WORTH, TEXAS



(CONTINUED ON FOLLOWING PAGE)

NOTE: Chart not to scale.

# DALLAS THREE DEPARTURE



## DEPARTURE ROUTE DESCRIPTION

TAKEOFF RUNWAY 16: Climb on heading 166° to 1600 before proceeding on course.

TAKEOFF RUNWAY 17: Climb on heading 164° to 1600 before proceeding on course.

When entering controlled airspace, fly assigned heading for RADAR vectors to appropriate route. Maintain ATC assigned altitude.

BELCHER TRANSITION (DALL3.EIC): From over TTT VOR/DME on TTT R-094 to POTEN, then on EIC R-259 to EIC VORTAC.

LITTLE ROCK TRANSITION (DALL3.LIT): From over TTT VOR/DME on TTT R-064 to ORTRO, then on LIT R-235 to LIT VORTAC.

SOLDO TRANSITION (DALL3.SOLDO): From over TTT VOR/DME on TTT R-084 to SOLDO.

TEXARKANA TRANSITION (DALL3.TXK): From over TTT VOR/DME on TTT R-074 to SHERO, then on TXK R-244 to TXK VORTAC.

SC-2, 20 FEB 2025 to 20 MAR 2025

SC-2, 20 FEB 2025 to 20 MAR 2025