

DALLAS THREE DEPARTURE  
(DAL3 TTT) 25ANZ4

FORT WORTH, TEXAS  
FORT WORTH NAS JRB (CARSWELL FLD) (NFW)

LONE STAR DEP CON  
125.8 257.95  
ATIS ★  
351.675  
CLNC DEL  
126.4 254.325  
GND CON  
121.675 279.575  
NAVY FORT WORTH TOWER ★  
120.95 269.325

RADAR and DME required.

**TOP ALTITUDE:  
ASSIGNED BY ATC**

BONHAM  
114.6 BYP  
Chan 93

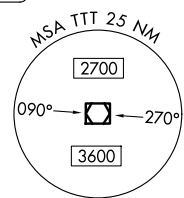
MAVERICK  
113.1 TTT  
Chan 78

GREGG COUNTY  
112.9 GGG  
Chan 76

LITTLE ROCK  
113.9 LIT  
Chan 86

TEXARKANA  
116.3 TXK  
Chan 110

BELCHER  
117.4 EIC  
Chan 121



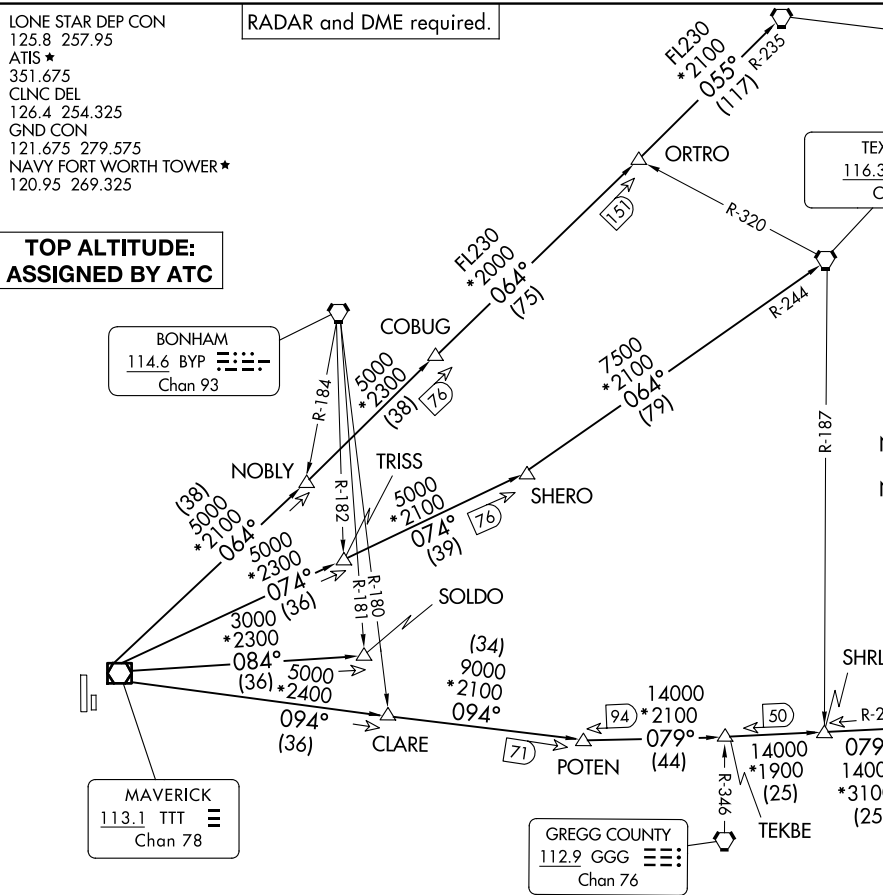
TAKEOFF MINIMUMS  
Refer to appropriate military service directives.

NOTE: BELCHER Transition: For aircraft inbound to the JAN, MLU, and SHV terminal areas only.  
NOTE: SOLDO Transition: ATC assigned.



(DAL3 TTT) 24305  
DALLAS THREE DEPARTURE

FORT WORTH NAS JRB (CARSWELL FLD) (NFW)  
AL-160 (FAA)  
FORT WORTH, TEXAS



(CONTINUED ON FOLLOWING PAGE)

NOTE: Chart not to scale.

# DALLAS THREE DEPARTURE



## DEPARTURE ROUTE DESCRIPTION

When entering controlled airspace, fly assigned heading for RADAR vectors to appropriate route. Maintain ATC assigned altitude.

BELCHER TRANSITION (DALL3.EIC): From over TTT VOR/DME on TTT R-094 to POTEN, then on EIC R-259 to EIC VORTAC.

LITTLE ROCK TRANSITION (DALL3.LIT): From over TTT VOR/DME on TTT R-064 to ORTRO, then on LIT R-235 to LIT VORTAC.

SOLDO TRANSITION (DALL3.SOLDO): From over TTT VOR/DME on TTT R-084 to SOLDO.

TEXARKANA TRANSITION (DALL3.TXK): From over TTT VOR/DME on TTT R-074 to SHERO, then on TXK R-244 to TXK VORTAC.

SC-2, 20 FEB 2025 to 20 MAR 2025

SC-2, 20 FEB 2025 to 20 MAR 2025