

# HI-TACAN Y RWY 18

TACAN NFW Chan <b>24</b>	APCH CRS <b>172°</b>	Rwy Idg <b>11,999</b> TDZE <b>636</b> Arpt Elev <b>650</b>	[USN]	FORT WORTH NAS JRB (CARSWELL FLD) (KNFW)
-----------------------------	-------------------------	--	-------	--

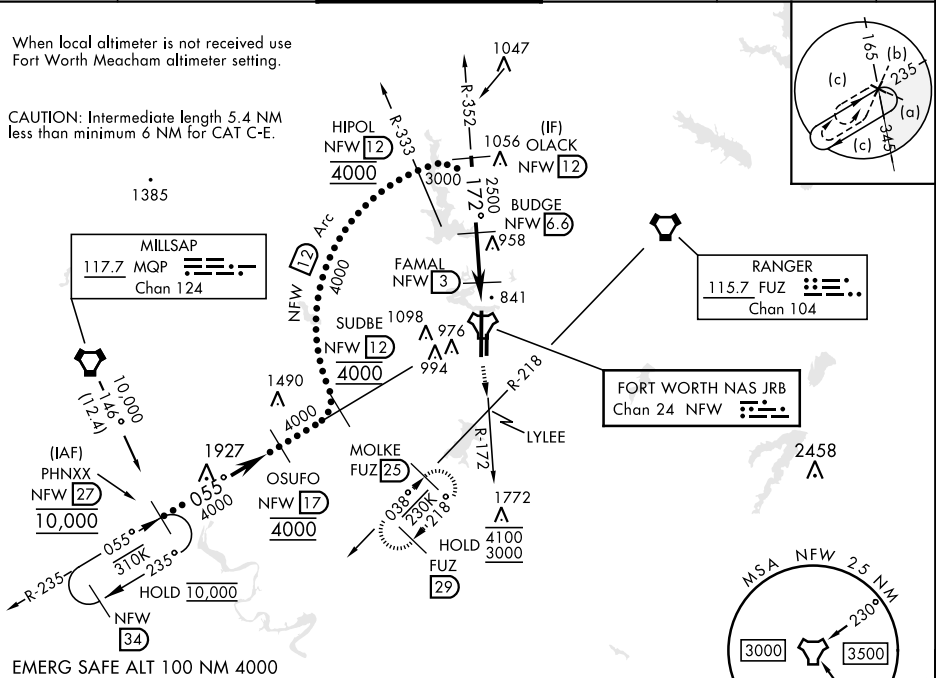
\* Circling not authorized E of Rwy 18-36.
 

 MISSED APPROACH: Climb to 3000 direct LYLEE to intercept FUZ VORTAC R-218 to MOLKE and hold.

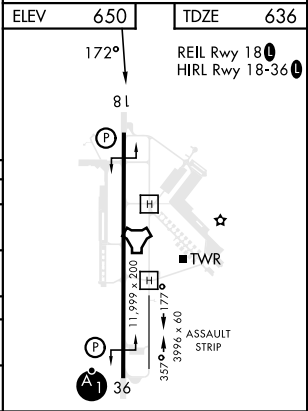
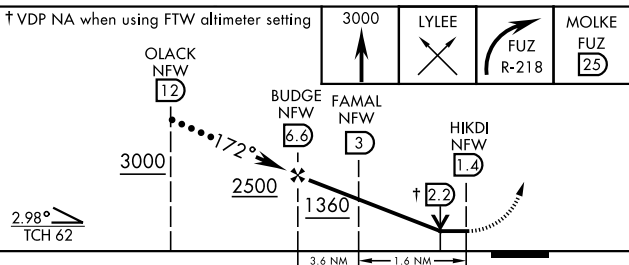
ATIS* <b>351.675</b>	LONE STAR APP CON <b>125.8 257.95</b>	NAVY FORT WORTH TOWER* <b>120.950 269.325</b>	GND CON <b>121.675 279.575</b>	CLNC DEL <b>126.4 254.325</b>	ASR/PAR
-------------------------	--	--	-----------------------------------	----------------------------------	---------

When local altimeter is not received use Fort Worth Meacham altimeter setting.

CAUTION: Intermediate length 5.4 NM less than minimum 6 NM for CAT C-E.



EMERG SAFE ALT 100 NM 4000



CATEGORY	C	D	E
S-18	1100-1 $\frac{3}{4}$	464 (500-1 $\frac{3}{4}$ )	
CIRCLING*	1320-1 $\frac{3}{4}$ 670 (700-1 $\frac{3}{4}$ )	1340-2 $\frac{1}{4}$ 690 (700-2 $\frac{1}{4}$ )	1440-2 $\frac{3}{4}$ 790 (800-2 $\frac{3}{4}$ )
FORT WORTH MEACHAM ALTIMETER			
S-18	1120-1 $\frac{3}{4}$	484 (500-1 $\frac{3}{4}$ )	
CIRCLING*	1340-2 690 (700-1)	1360-2 $\frac{1}{4}$ 710 (700-2 $\frac{1}{4}$ )	1460-2 $\frac{3}{4}$ 810 (900-2 $\frac{3}{4}$ )

FORT WORTH, TEXAS 32°46'N-97°26'W FORT WORTH NAS JRB (CARSWELL FLD) (KNFW)  
 Orig 18MAY23

# HI-TACAN Y RWY 18

SC-2, 20 FEB 2025 to 20 MAR 2025

SC-2, 20 FEB 2025 to 20 MAR 2025