

FORT WORTH, TEXAS

ILS Z or LOC Z RWY 18

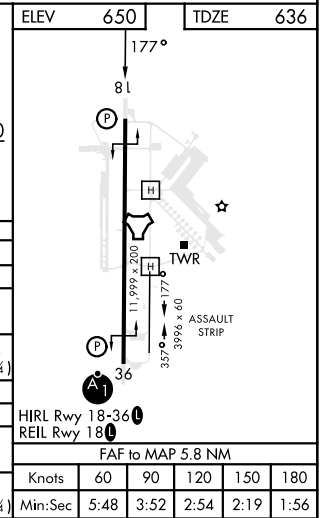
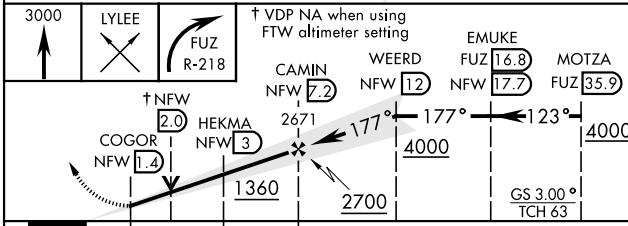
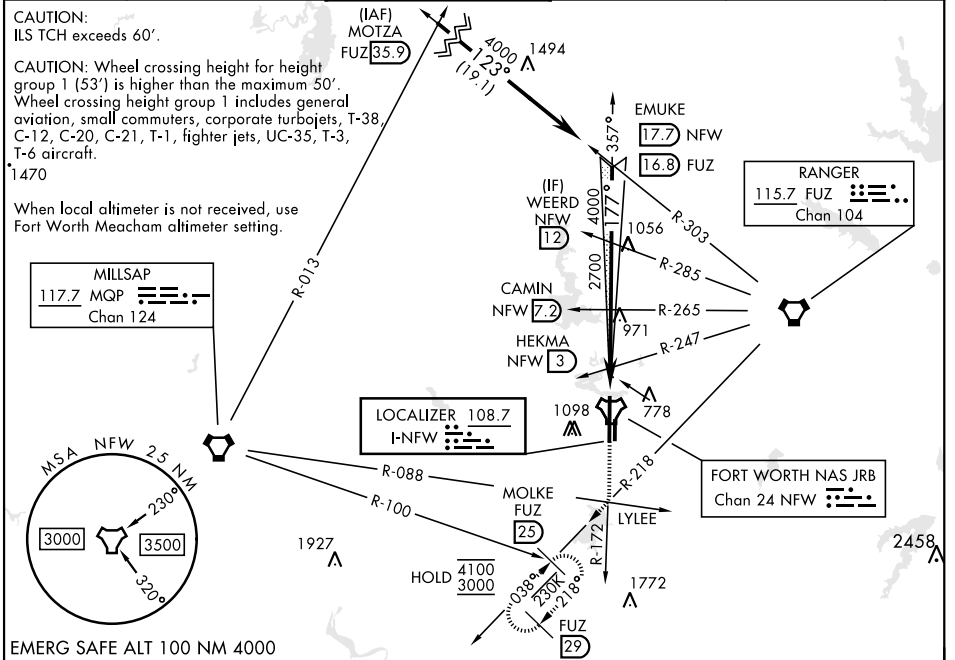
LOC I-NFW 108.7	APCH CRS 177°	Rwy Idg 11,999 TDZE 636 Arpt Elev 650
---------------------------	-------------------------	--

[USN] FORT WORTH NAS JRB (CARSWELL FLD) (KNFW)

FUZ VORTAC or RADAR required
 * Circling not authorized E of Rwy 18-36.

MISSED APPROACH: Climb to 3000 direct LYLEE to intercept FUZ VORTAC R-218 to MOLKE and hold.

ATIS* 351.675	LONE STAR APP CON 125.8 257.95	NAVY FORT WORTH TOWER* 120.950 269.325	GND CON 121.675 279.575	CLNC DEL 126.4 254.325	ASR/PAR
-------------------------	--	--	-----------------------------------	----------------------------------	---------



CATEGORY	A	B	C	D	E
S-ILS 18	836- ³ / ₄		200	(200- ³ / ₄)	
S-LOC 18	1040-1	404 (400-1)	1040-1 ¹ / ₈	404	(400-1 ¹ / ₈)
C CIRCLING*	1220-1 570 (600-1)	1320-1 670 (700-1)	1320-1 ³ / ₄ 670 (700-1 ³ / ₄)	1340-2 ¹ / ₄ 690 (700-2 ¹ / ₄)	1440-2 ³ / ₄ 790 (800-2 ³ / ₄)
FORT WORTH MEACHAM ALTIMETER					
S-ILS 18	856- ³ / ₄		220	(300- ³ / ₄)	
S-LOC 18	1060-1	424 (500-1)	1060-1 ¹ / ₄	424	(500-1 ¹ / ₄)
C CIRCLING*	1240-1 590 (600-1)	1340-1 690 (700-1)	1340-2 690 (700-2)	1360-2 ¹ / ₄ 710 (800-2 ¹ / ₄)	1460-2 ³ / ₄ 810 (900-2 ³ / ₄)

FORT WORTH, TEXAS 32°46'N-97°26'W FORT WORTH NAS JRB (CARSWELL FLD) (KNFW)

Orig 18MAY23

ILS Z or LOC Z RWY 18

SC-2, 20 FEB 2025 to 20 MAR 2025

SC-2, 20 FEB 2025 to 20 MAR 2025