

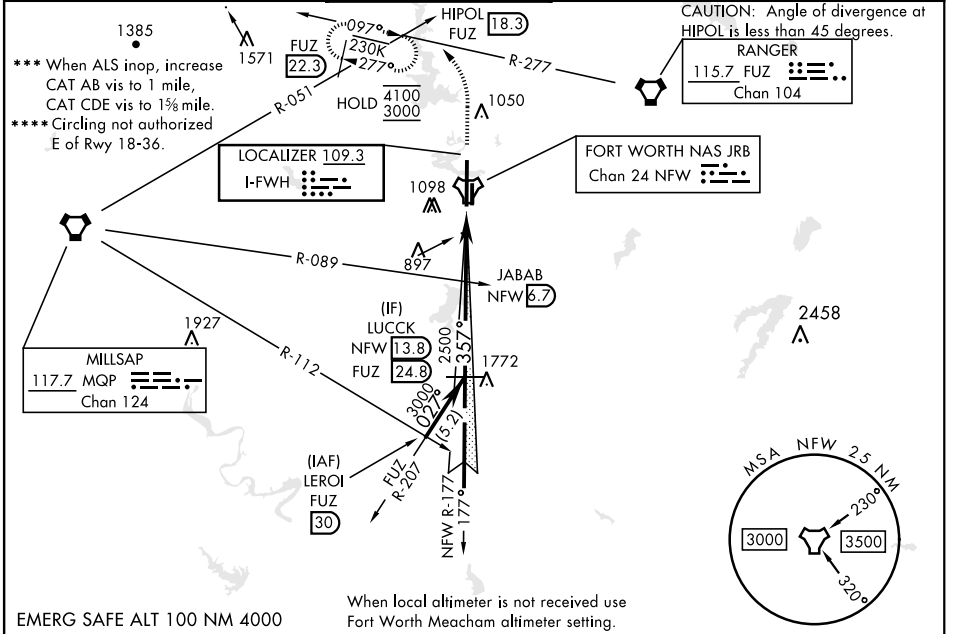
FORT WORTH, TEXAS

# I LS Z or LOC Z RWY 36

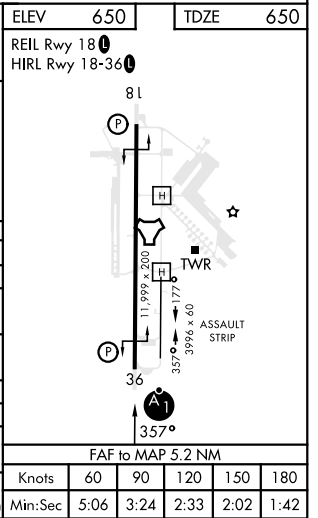
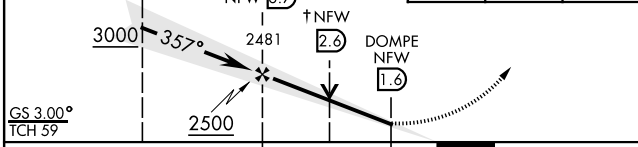
LOC I-FWH <b>109.3</b>	APCH CRS <b>357°</b>	Rwy Idg <b>11,999</b> TDZE <b>650</b> Arpt Elev <b>650</b>	[USN] FORT WORTH NAS JRB (CARSWELL FLD) (KNFW)
---------------------------	-------------------------	--	--

FUZ VORTAC or RADAR required. * When ALS inop, increase vis to ¾ mile. ** When ALS inop, increase CAT AB vis to 1 mile, CAT CDE vis to 1½ mile.	ALSF-1 	MISSED APPROACH: Climb to 2000, then climbing left turn to 3000 heading 330° and FUZ VORTAC R-277 to HIPOL and hold. FUZ VORTAC required for missed approach.
---	------------	---

ATIS* <b>351.675</b>	LONE STAR APP CON <b>125.8 257.95</b>	NAVY FORT WORTH TOWER* <b>120.950 269.325</b>	GND CON <b>121.675 279.575</b>	CLNC DEL <b>126.4 254.325</b>	ASR/PAR
-------------------------	--	--	-----------------------------------	----------------------------------	---------



EMERG SAFE ALT 100 NM 4000	2000 3000 hdg 330°	ELEV 650 TDZE 650
----------------------------	--------------------------	----------------------



CATEGORY	A	B	C	D	E
S-ILS 36*	850-½		200	(200-½)	
S-LOC 36**	1180-½	530 (600-½)	1180-1	530 (600-1)	
CIRCLING	1220-1	1320-1	1320-1¾	1340-2¼	1440-2¾
	570 (600-1)	670 (700-1)	670 (700-1¾)	690 (700-2¼)	790 (800-2¾)
FORT WORTH MEACHAM ALTIMETER					
S-ILS 36*	870-½		220	(300-½)	
S-LOC 36***	1200-½	550 (600-½)	1200-1½	550 (600-1½)	
CIRCLING	1240-1	1340-1	1340-2	1360-2¼	1460-2¾
	590 (600-1)	690 (700-1)	690 (700-2)	710 (800-2¼)	810 (900-2¾)

FORT WORTH, TEXAS 32°46'N-97°26'W FORT WORTH NAS JRB (CARSWELL FLD) (KNFW)

Orig 18MAY23

# I LS Z or LOC Z RWY 36

SC-2, 20 FEB 2025 to 20 MAR 2025

SC-2, 20 FEB 2025 to 20 MAR 2025