

FORT WORTH, TEXAS

RNAV (GPS) RWY 18

WAAS CH 71215 W18A	APCH CRS 177°	Rwy Ildg 11,999 TDZE 636 Arprt Elev 650
--	-------------------------	--

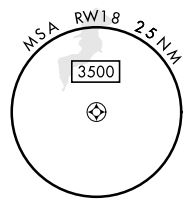
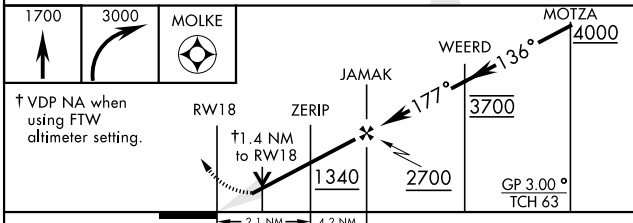
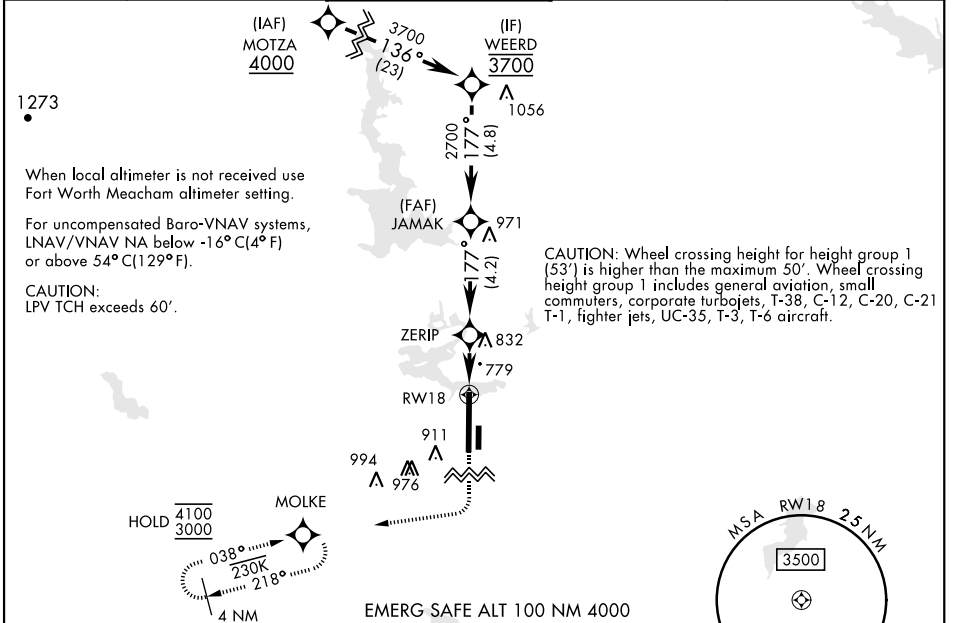
[UN]

FORT WORTH NAS JRB (CARSWELL FLD) (KNFW)

RNP APCH
 * Circling not authorized E of Rwy 18-36.
 ** Baro VNAV NA when local altimeter not received.

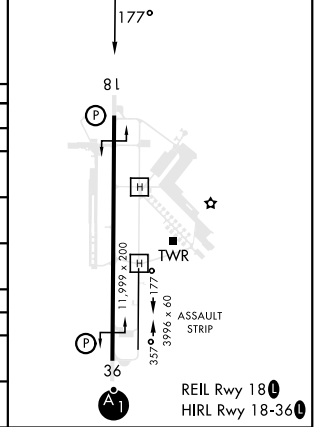
MISSED APPROACH: Climb to 1700, then climbing right turn to 3000 direct MOLKE and hold.

ATIS* 351.675	LONE STAR APP CON 125.8 257.95	NAVY FORT WORTH TOWER* 120.950 269.325	GND CON 121.675 279.575	CLNC DEL 126.4 254.325	ASR/PAR
-------------------------	--	--	-----------------------------------	----------------------------------	---------



ELEV 650	TDZE 636
----------	----------

CATEGORY	A	B	C	D
LPV DA	836-3/4	200	(200-3/4)	
LNAV/VNAV DA**	1079-13/8	443	(500-13/8)	
LNAV MDA	1120-1 484 (500-1)		1120-13/8 484 (500-13/8)	
CIRCLING*	1220-1 570 (600-1)	1320-1 670 (700-1)	1320-13/4 670 (700-13/4)	1340-21/4 690 (700-21/4)
FORT WORTH MEACHAM ALTIMETER				
LPV DA	856-3/4	220	(300-3/4)	
LNAV MDA	1140-1 504 (500-1)		1140-13/8 504 (500-13/8)	
CIRCLING*	1240-1 590 (600-1)	1340-1 690 (700-1)	1340-2 690 (700-2)	1360-21/4 710 (800-21/4)



FORT WORTH, TEXAS
Amdt 2 18MAY23

32°46'N-97°26'W

FORT WORTH NAS JRB (CARSWELL FLD) (KNFW)

RNAV (GPS) RWY 18

SC-2, 20 FEB 2025 to 20 MAR 2025

SC-2, 20 FEB 2025 to 20 MAR 2025