

FORT WORTH, TEXAS

RNAV (GPS) RWY 36

WAAS CH 49487 W36A	APCH CRS 357°	Rwy Idg 11,999 TDZE 650 Arprt Elev 650
--	-------------------------	---

[USN]

FORT WORTH NAS JRB (CARSWELL FLD) (KNFW)

RNP APCH ▼ * When ALS inop, increase vis to ¾ mile.	ALS-1 	MISSED APPROACH: Climb to 1700, then climbing left turn to 3000 direct HIPOL and hold.
--	-----------	--

ATIS* 351.675	LONE STAR APP CON 125.8 257.95	NAVY FORT WORTH TOWER* 120.950 269.325	GND CON 121.675 279.575	CLNC DEL 126.4 254.325	ASR/PAR
-------------------------	--	--	-----------------------------------	----------------------------------	---------

• 1329

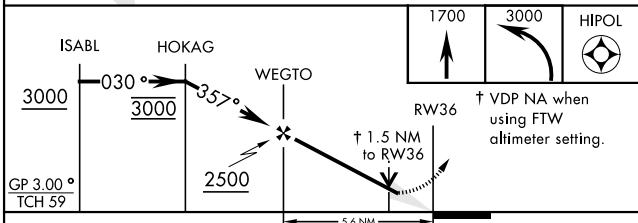
** When ALS inop, increase CAT AB vis to 1 mile, CAT CD vis to 1/8 miles.

*** When ALS inop, increase vis to 1 1/8 miles, Baro VNAV NA when local altimeter not received.

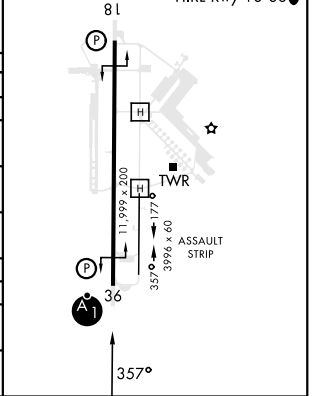
**** Circling not authorized E of Rwy 18-36.

When local altimeter is not received use Fort Worth Meacham altimeter setting.

For uncompensated BaroVNAV systems, LNAV/VNAV NA below -16°C (4°F) or above 54°C (129°F).



ELEV	650	TDZE	650
------	-----	------	-----



CATEGORY	A	B	C	D
LPV DA *	850-1/2		200	(200-1/2)
LNAV MDA **	1200-1/2	550 (600-1/2)	1200-1 1/8	550 (600-1 1/8)
LNAV/VNAV DA ***	1195-1 1/8		545	(600-1 1/8)
CIRCLING ****	1220-1 570 (600-1)	1320-1 670 (700-1)	1320-1 3/4 670 (700-1 3/4)	1340-2 1/4 690 (700-2 1/4)
FORT WORTH MEACHAM ALTIMETER				
LPV DA *	870-1/2		220	(300-1/2)
LNAV MDA **	1220-1/2	570 (600-1/2)	1220-1 1/4	570 (600-1 1/4)
CIRCLING ****	1240-1 590 (600-1)	1340-1 690 (700-1)	1340-2 690 (700-2)	1360-2 1/4 710 (800-2 1/4)

FORT WORTH, TEXAS 32°46'N-97°26'W FORT WORTH NAS JRB (CARSWELL FLD) (KNFW)

Amdt 2 18MAY23

RNAV (GPS) RWY 36

SC-2, 20 FEB 2025 to 20 MAR 2025

SC-2, 20 FEB 2025 to 20 MAR 2025