

FRESNO, CALIFORNIA

HI-LOC Z RWY 11L

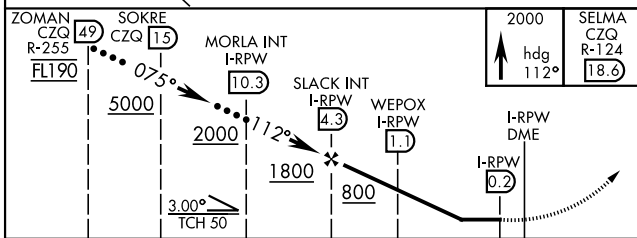
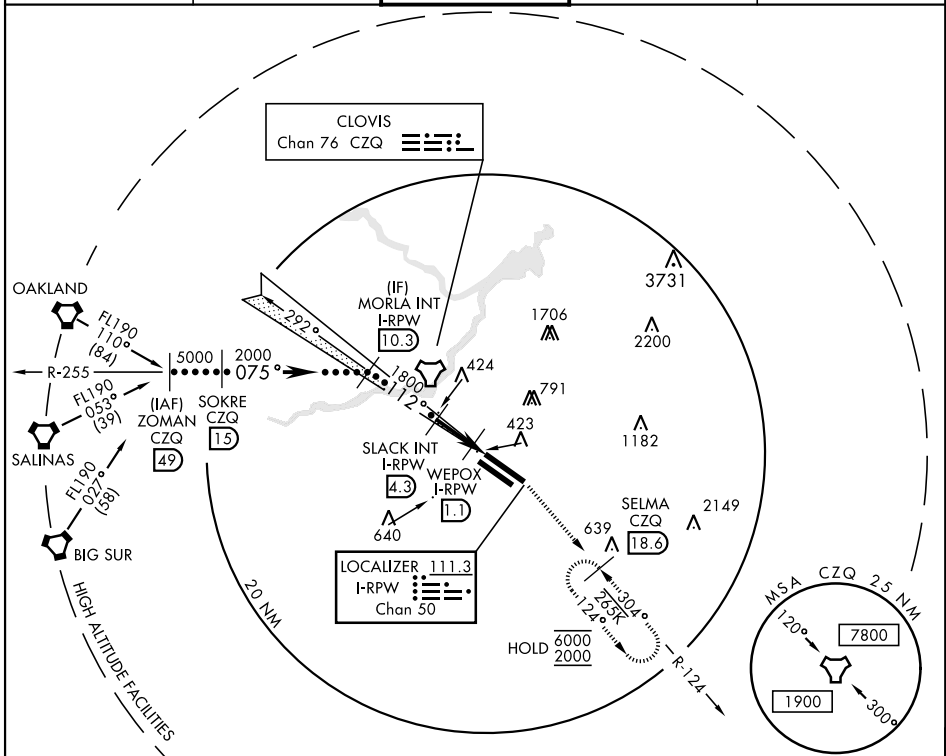
LOC/DME I-RPW 111.3 Chan 50	APCH CRS 112°	Rwy Idg 11L 9279 11R 8008 TDZE 11L 336 11R 333 Arprt Elev 336
---	-------------------------	---

AL-162 [USAF] FRESNO YOSEMITE INTL (KFAT)

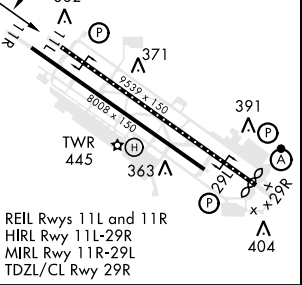
DME required.

MISSED APPROACH: Climb to 2000 on heading 112° and CZQ TACAN R-124 to SELMA 18.6 DME and hold.

ATIS 121.35 273.6	APP CON 119.6 351.95	TOWER 118.2 251.1	GND CON 121.7 348.6	CLNC DEL 124.35 348.6
-----------------------------	--------------------------------	-----------------------------	-------------------------------	---------------------------------



ELEV 336	TDZE 11L 336
112° 4.5 NM from FAF	TDZE 11R 333
Rwy 11L Idg 9279'	Rwy 29R Idg 9227'



CATEGORY	C	D	E
S-LOC 11L	680/55	344	(400-1¼)
SIDE STEP RWY 11R	680-1½ 347 (400-1½)	680-2	347 (400-2)
CIRCLING	920-1½ 584 (600-1½)	920-2 584 (600-2)	1140-2¾ 804 (900-2¾)

FRESNO, CALIFORNIA
Amdt 3 10OCT19

36°47'N-119°43'W

FRESNO YOSEMITE INTL (KFAT)

HI-LOC Z RWY 11L

SW-2, 20 FEB 2025 to 20 MAR 2025

SW-2, 20 FEB 2025 to 20 MAR 2025