

(CRIED1.CRIED) 24193

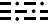
SCHOLES INTL AT GALVESTON (GLS)

# CRIED ONE DEPARTURE

AL-164 (FAA)

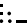
GALVESTON, TEXAS

ASOS  
 123.95  
 CLNC DEL (When twr closed)  
 135.35  
 GND CON  
 118.625  
 GALVESTON TOWER ★  
 120.575 (CTAF)  
 HOUSTON DEP CON  
 134.45 284.0

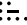
CEDAR CREEK  
 114.8 CQY   
 Chan 95

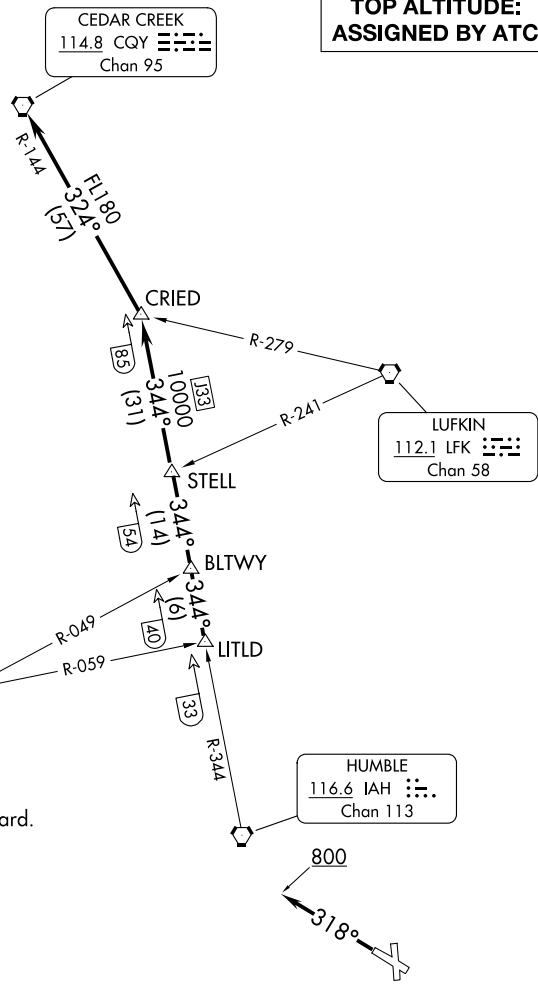
**TOP ALTITUDE:  
 ASSIGNED BY ATC**

NOTE: RADAR required.

NAVASOTA  
 115.9 TNV   
 Chan 106

**TAKEOFF MINIMUMS**  
 Rwy's 14, 18, 32, 36: Standard.

HUMBLE  
 116.6 IAH   
 Chan 113



SC-5, 20 FEB 2025 to 20 MAR 2025

SC-5, 20 FEB 2025 to 20 MAR 2025

NOTE: Chart not to scale.

## DEPARTURE ROUTE DESCRIPTION

**TAKEOFF RUNWAYS 14, 18, 36:** When entering controlled airspace, climb on assigned heading for RADAR vectors to LITLD INT. Maintain ATC assigned altitude. Expect filed altitude 10 minutes after departure, thence . . . .

**TAKEOFF RUNWAY 32:** Climb on heading 318° to 800 before turning. When entering controlled airspace, climb on assigned heading for RADAR vectors to LITLD INT. Maintain ATC assigned altitude. Expect filed altitude 10 minutes after departure, thence . . . .

. . . . on IAH R-344 to STELL INT, then on IAH R-344 to CRIED INT, then left turn on CQY R-144 to CQY VORTAC.

# CRIED ONE DEPARTURE

(CRIED1.CRIED) 07OCT21

GALVESTON, TEXAS

SCHOLES INTL AT GALVESTON (GLS)