

ILS RWY 22L (SA CAT I & II)

CHICAGO O'HARE INTL (ORD)

LOC I-LQQ	APP CRS	Rwy ldg TDZE	8075 654 680
110.1	225°	Apt Elev	

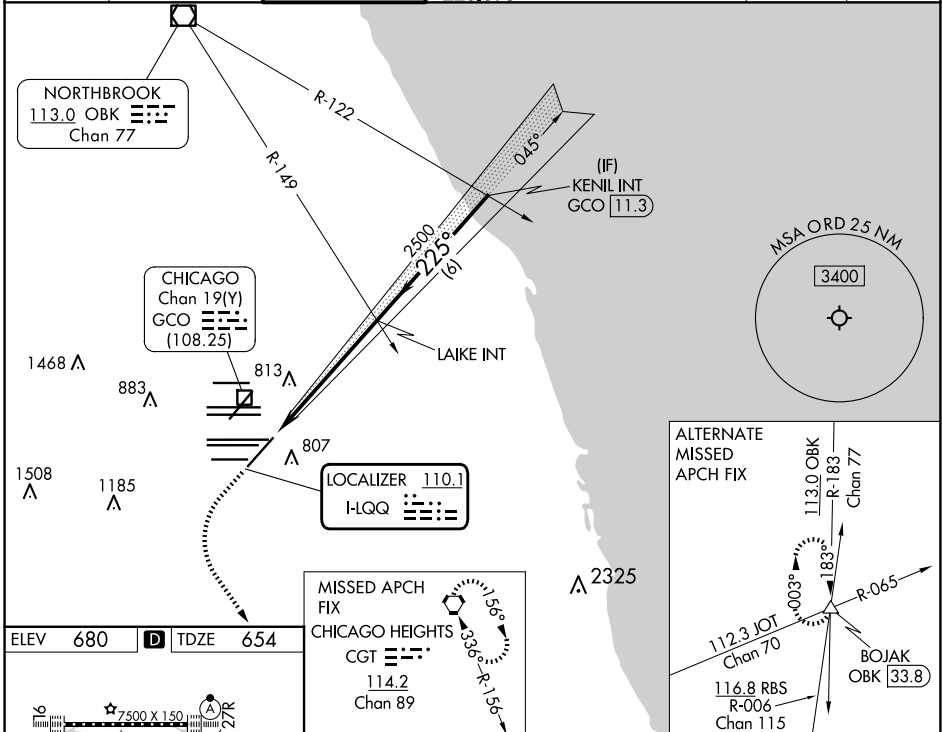
RADAR required for procedure entry.

Simultaneous approach authorized.
SA CAT I: Requires specific OPSPEC, MSPEC, or LOA approval and use of HUD to DH.
SA CAT II: Reduced lighting: Requires specific OPSPEC, MSPEC, or LOA approval and use of autoland or HUD to touchdown.

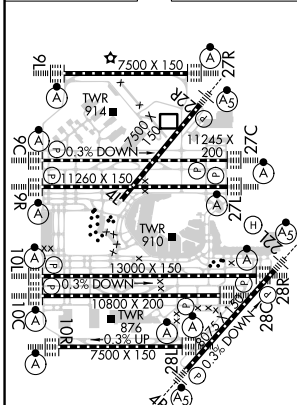


MISSED APPROACH:
Climb to 1100 then climbing left turn to 4000 direct CGT VORTAC and hold.

D-ATIS	CHICAGO APP CON	O'HARE TOWER	GND CON (TWR NORTH)	(TWR CENTER)	CLNC DEL	CPDLC
135.4	119.0 292.125	120.75 348.0	124.125 (TWR NORTH)	121.75 (OBND)	121.6	
282.225			118.05 (TWR SOUTH)	121.9 (IBND)		
			226.675 (ALL TWRs)			

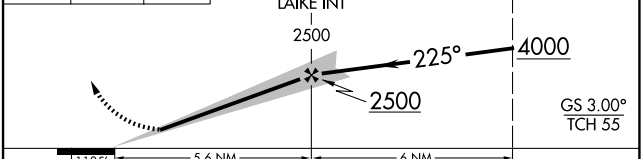


ELEV 680	D	TDZE 654
----------	----------	----------



MISSED APCH FIX	CGT	114.2	Chan 89
-----------------	-----	-------	---------

VGSI and ILS glidepath not coincident (VGSI Angle 3.00/TCH 73).
 KENIL INT GCO 113.3



CATEGORY	A	B	C	D
S-ILS 22L	SA CAT I	RA 164/16	150 DA 804	
S-ILS 22L	SA CAT II	RA 112/12	100 DA 754	

SA CATEGORY I & II ILS - SPECIAL AIRCREW & AIRCRAFT CERTIFICATION REQUIRED

EC-3, 20 FEB 2025 to 20 MAR 2025

EC-3, 20 FEB 2025 to 20 MAR 2025