

LOC/DME I-IAC 110.5 Chan 42	APP CRS 273°	Rwy ldg 11260 TDZE 654 Apt Elev 680
---	------------------------	--

ILS RWY 27L (CAT II & III)

CHICAGO O'HARE INTL (ORD)

RNP APCH-GPS from VOGLR.

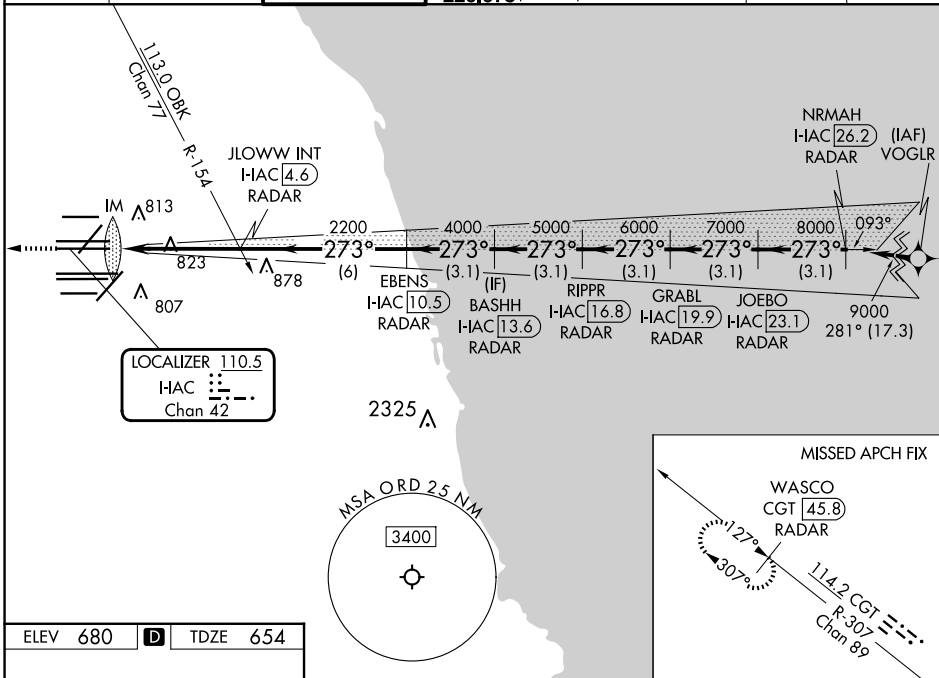
Aircraft not GPS equipped - RADAR required for procedure entry. DME or RADAR required.



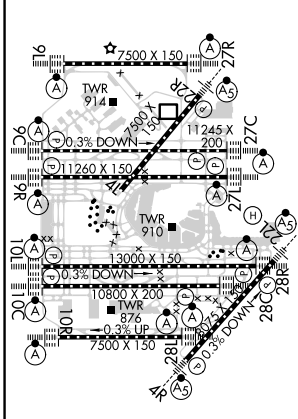
MISSED APPROACH: Climb to 1200 then climb to 4000 on heading 265° and on CGT VORTAC R-307 to WASCO/CGT 45.8 DME/RADAR and hold.

Simultaneous approach authorized.

D-ATIS 135.4 282.225	CHICAGO APP CON 119.0 292.125	O'HARE TOWER 126.9 348.0	GND CON (TWR CENTER) 124.125 (TWR NORTH) 118.05 (TWR SOUTH) 226.675 (ALL TWRs)	(TWR CENTER) 121.75 (OBND) 121.9 (IBND)	CLNC DEL 121.6	CPDLC
--	---	------------------------------------	--	---	--------------------------	-------



ELEV 680	D	TDZE 654
----------	----------	----------



HIRL all Rwys
TDZ/CL all Rwys except 4L

1200	4000	CGT R-307	WASCO CGT [45.8] RADAR	VGSI and ILS glidepath not coincident (VGSI Angle 3.00/TCH 77).	NRMAH I-IAC [26.2] RADAR
hdg 265°					
		JLOWW INT I-IAC [4.6] RADAR	BASHH I-IAC [13.6] RADAR	GRABL I-IAC [19.9] RADAR	JOEBO I-IAC [23.1] RADAR
		EBENS I-IAC [10.5] RADAR	RIPPR I-IAC [16.8] RADAR		
		IM 751			
		2200	4000	5000	6000
					7000
					8000
					9000
					GS 3.00° TCH 57
1066'	0.1	4.7 NM	6 NM	3.1 NM	3.1 NM
CATEGORY	A	B	C	D	
S-ILS 27L	CAT II RA 110/12 100 DA 754				
S-ILS 27L	CAT III RVR 06				

CATEGORY II & III ILS - SPECIAL AIRCREW & AIRCRAFT CERTIFICATION REQUIRED