


LOC/DME I-AIC 110.5 Chan 42	APP CRS 273°	Rwy Idg 11260 TDZE 654 Apt Elev 680
---	------------------------	--

ILS RWY 27L (SA CAT I)

CHICAGO O'HARE INTL (ORD)

RNP APCH-GPS from VOGLR.

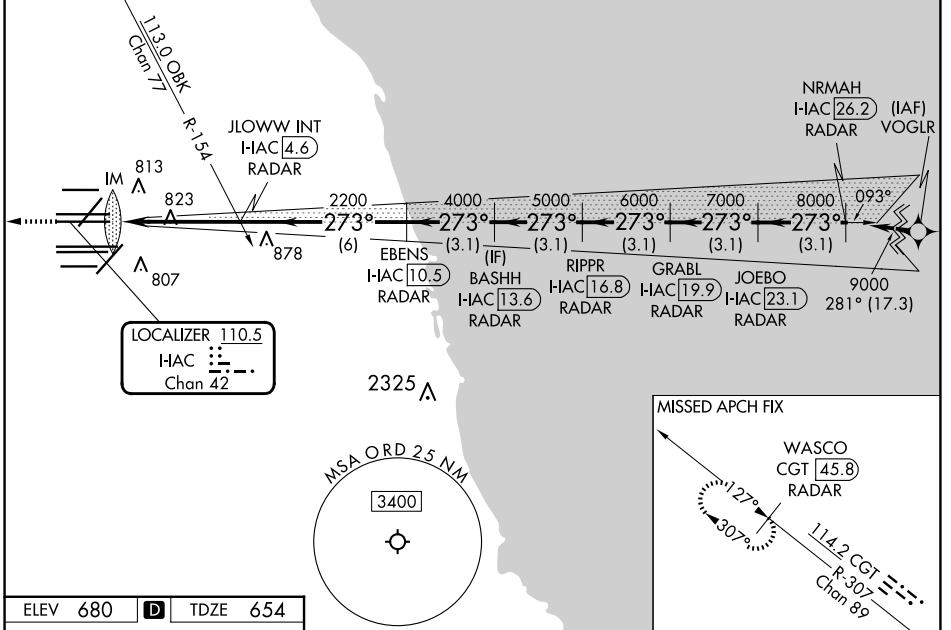
Aircraft not GPS equipped - RADAR required for procedure entry. DME or RADAR required.

ALSIF-2 

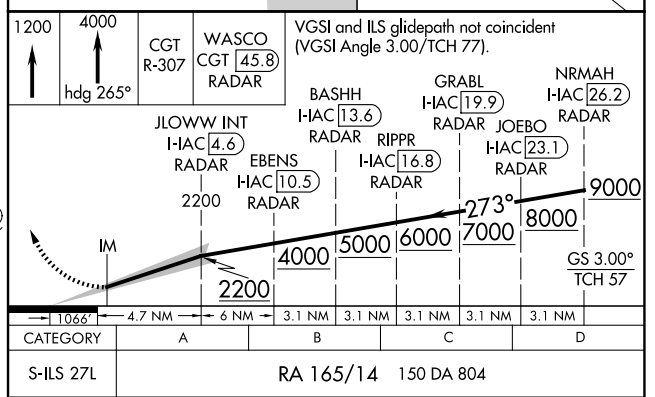
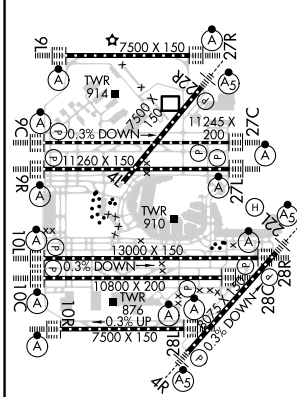
MISSED APPROACH: Climb to 1200 then climb to 4000 on heading 265° and on CGT VORTAC R-307 to WASCO/CGT 45.8 DME/RADAR and hold.

 Simultaneous approach authorized. Requires specific OPSPEC, MSPEC, or LOA approval.

D-ATIS 135.4 282.225	CHICAGO APP CON 119.0 292.125	O'HARE TOWER 126.9 348.0	GND CON (TWR CENTER) 124.125 (TWR NORTH) 118.05 (TWR SOUTH) 226.675 (ALL TWRs)	121.75 (OBND) 121.9 (IBND)	CLNC DEL 121.6	CPDLC
--	---	------------------------------------	--	---	--------------------------	-------



ELEV 680	D	TDZE 654
----------	----------	----------



SA CATEGORY I ILS - SPECIAL AIRCREW & AIRCRAFT CERTIFICATION REQUIRED

RA 165/14 150 DA 804

EC-3, 20 FEB 2025 to 20 MAR 2025

EC-3, 20 FEB 2025 to 20 MAR 2025