

LOC/DME I-TSL 111.1 Chan 48	APP CRS 273°	Rwy ldg 13000 TDZE 651 Apt Elev 680
---	------------------------	--

ILS RWY 28R (SA CAT I)

CHICAGO O'HARE INTL (ORD)

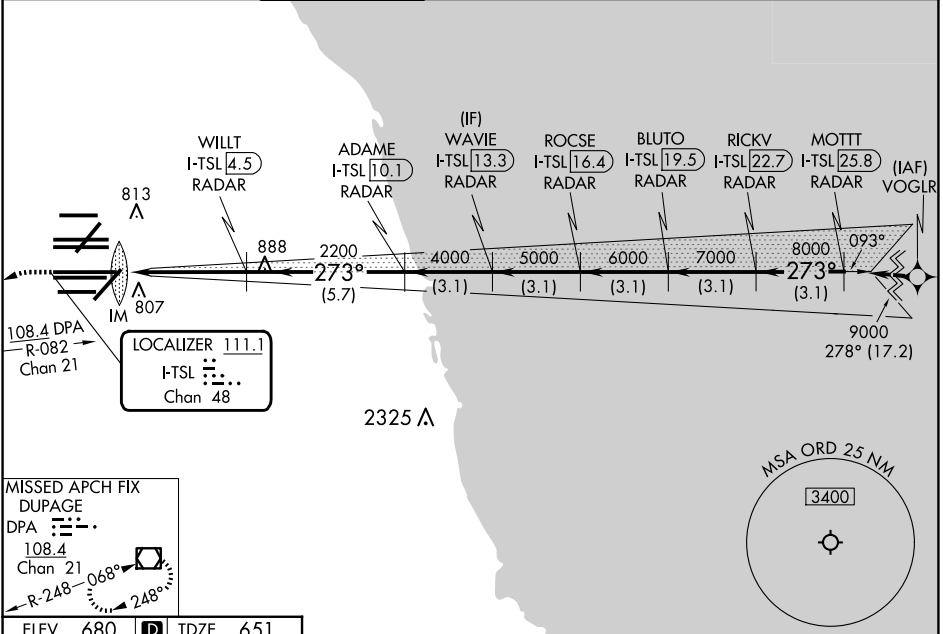
From VOGLR: RNAV 1-GPS required.
Aircraft not GPS equipped - RADAR required for procedure entry.
DME or RADAR required.

ALSIF-2

MISSED APPROACH: Climb to 1100 then climbing left turn to 4000 on heading 215° and DPA VOR/DME R-082 to DPA VOR/DME and hold.

Simultaneous approach authorized. Requires specific OPSPEC, MSPEC, or LOA approval and use of HUD to DH.

D-ATIS 135.4 282.225	CHICAGO APP CON 119.0 292.125	O'HARE TOWER 132.7 348.0	GND CON (TWR NORTH) 124.125 (TWR SOUTH) 118.05 (ALL TWRs) 226.675	(TWR CENTER) (OBND) 121.75 (IBND) 121.9	CLNC DEL 121.6	CPDLC
--	---	------------------------------------	---	--	--------------------------	-------

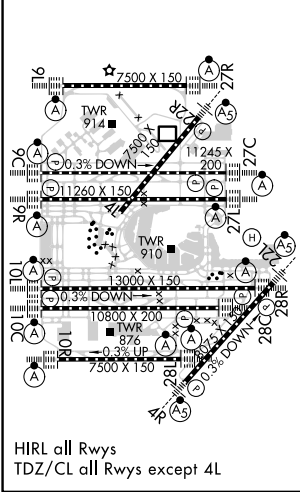


EC-3, 20 FEB 2025 to 20 MAR 2025

EC-3, 20 FEB 2025 to 20 MAR 2025

ELEV 680	D	TDZE 651
-----------------	----------	-----------------

1100	4000	DPA R-082	VGSI and ILS glidepath not coincident (VGSI Angle 3.00/TCH 70).
↑	hdg 215°		
WAVIE I-TSL [13.3] RADAR	BLUTO I-TSL [19.5] RADAR	MOTT I-TSL [25.8] RADAR	
WILLT I-TSL [4.5] RADAR	ADAME I-TSL [10.1] RADAR	RICKV I-TSL [22.7] RADAR	
ROCSE I-TSL [16.4] RADAR			
2200	4000	5000	6000
2200	4000	5000	6000
7000	8000	9000	9000
GS 3.00°	TCH 54		
1030'	4.7 NM	5.7 NM	3.1 NM
CATEGORY	A	B	C
S-ILS 28R	RA 161/14 150 DA 801		



SA CATEGORY I ILS - SPECIAL AIRCREW & AIRCRAFT CERTIFICATION REQUIRED