

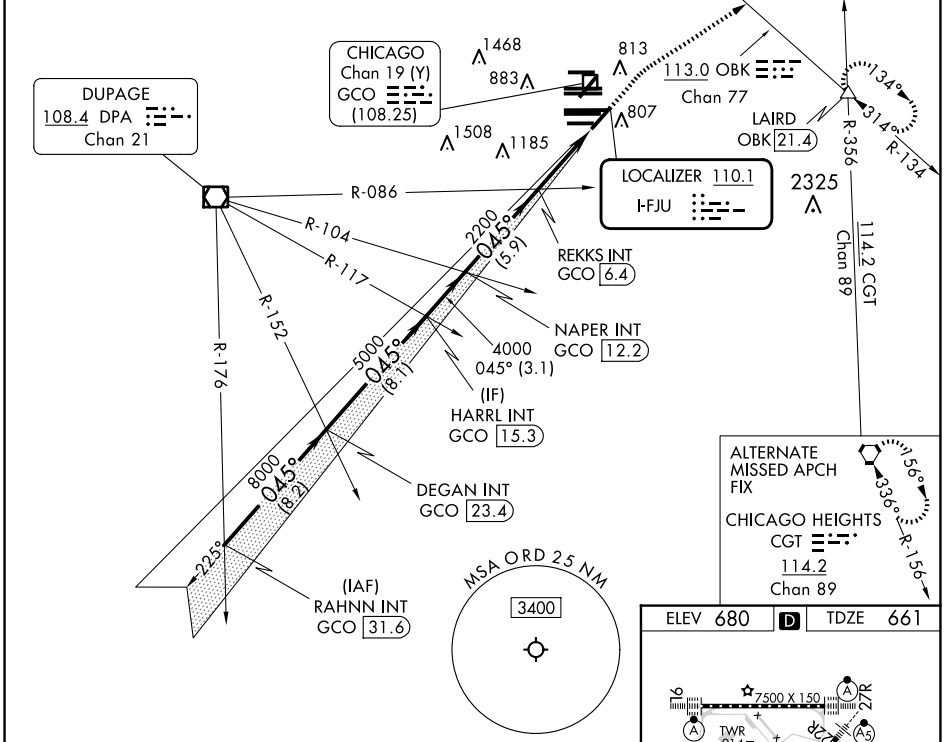
LOC I-FJU 110.1	APP CRS 045°	Rwy ldg TDZE Apt Elev 8075 661 680
---------------------------	------------------------	--

ILS RWY 4R (SA CAT I & II)

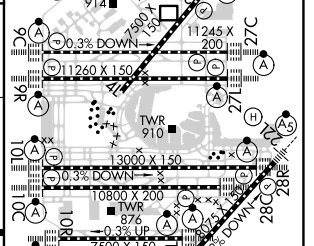
CHICAGO O'HARE INTL (ORD)

RADAR required for procedure entry.		MALSR 	MISSED APPROACH: Climb to 1200 then climbing right turn to 4000 on heading 060° and OBK VOR/DME R-134 to LAIRD INT/OBK 21.4 DME and hold.
<p>▼ SA CAT I: Requires specific OPSPEC, MSPEC, or LOA approval and use of HUD to DH. SA CAT II: Reduced lighting: Requires specific OPSPEC, MSPEC, or LOA approval and use of autoland or HUD to touchdown.</p>			

D-ATIS 135.4 282.225	CHICAGO APP CON 119.0 292.125	O'HARE TOWER 120.75 348.0	124.125 (TWR NORTH) 118.05 (TWR SOUTH) 226.675 (ALL TWRs)	GND CON (TWR CENTER) 121.75 (OBND) 121.9 (IBND)	CLNC DEL 121.6	CPDLC
--	---	-------------------------------------	--	---	--------------------------	-------

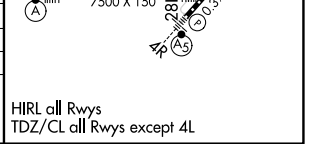


RAHNN INT GCO [31.6]	DEGAN INT GCO [23.4]	HARRL INT GCO [15.3]	NAPER INT GCO [12.2]	REKKS INT GCO [6.4]	LAIRD
<p>VGSI and ILS glidepath not coincident (VGSI Angle 3.00/TCH 67).</p>					
<p>1200 4000 OBK R-134 LAIRD</p>					
<p>GS 3.00° TCH 52</p>					
<p>8.2 NM 8.1 NM 3.1 NM 5.9 NM 4.4 NM 1049'</p>					



CATEGORY	A	B	C	D
S-ILS 4R	SA CAT I	RA 160/16	150 DA 811	
S-ILS 4R	SA CAT II	RA 111/12	100 DA 761	

SA CATEGORY I & II ILS - SPECIAL AIRCREW & AIRCRAFT CERTIFICATION REQUIRED



EC-3, 20 FEB 2025 to 20 MAR 2025

EC-3, 20 FEB 2025 to 20 MAR 2025