

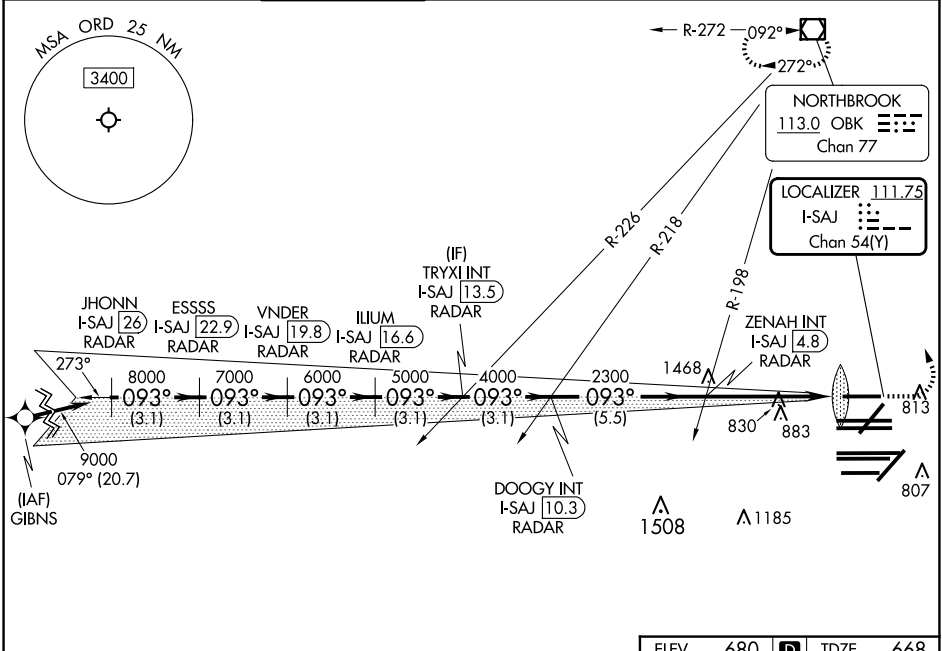
LOC/DME I-SAJ 111.75 Chan 54 (Y)	APP CRS 093°	Rwy Idg 7500 TDZE 668 Apt Elev 680
---	------------------------	--

ILS RWY 9L (CAT II & III)

CHICAGO O'HARE INTL (ORD)

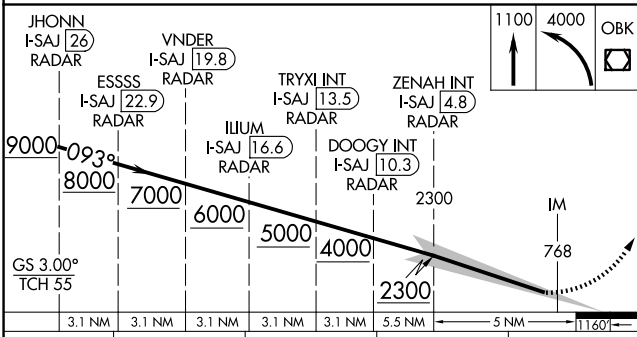
RNAV-1 GPS or RADAR required for procedure entry. RADAR or DME required.	ALSF-2 	MISSED APPROACH: Climb to 1100 then climbing left turn to 4000 direct OBK VOR/DME and hold, continue climb-in-hold to 4000.
Simultaneous approach authorized.		

D-ATIS 135.4 282.225	CHICAGO APP CON 119.0 292.125	O'HARE TOWER 128.15 348.0	GND CON (TWR CENTER) 124.125 (TWR NORTH) 118.05 (TWR SOUTH) 226.675 (ALL TWRs)	(TWR CENTER) 121.75 (OBND) 121.9 (IBND)	CLNC DEL 121.6	CPDLC
--	---	-------------------------------------	--	---	--------------------------	-------



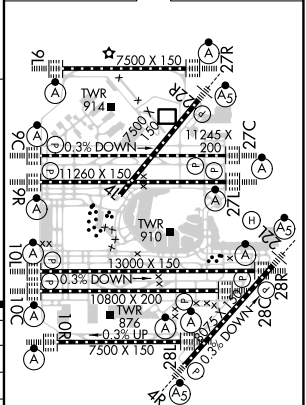
EC-3, 20 FEB 2025 to 20 MAR 2025

EC-3, 20 FEB 2025 to 20 MAR 2025



ELEV 680	TDZE 668
----------	----------

CATEGORY	A	B	C	D
S-ILS 9L	CAT II RA 104/12 100 DA 768			
S-ILS 9L	CAT III RVR 06			



CATEGORY II & III ILS - SPECIAL AIRCREW & AIRCRAFT CERTIFICATION REQUIRED

HIRL all Rwys
TDZ/CL all Rwys except 4L