

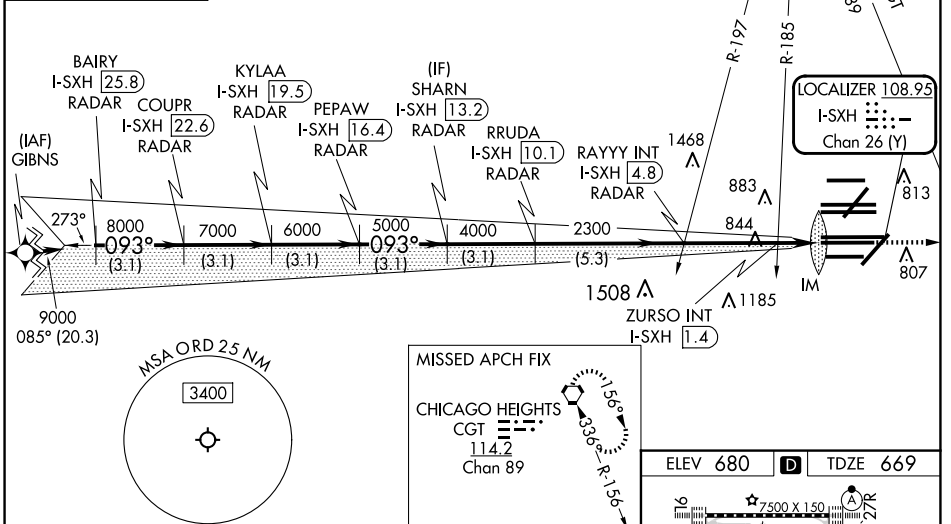
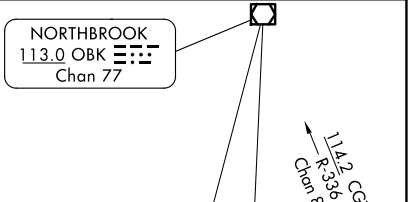
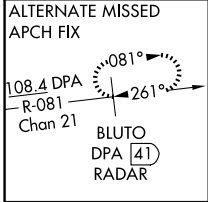
LOC/DME I-SXH <b>108.95</b> Chan 26(Y)	APP CRS <b>093°</b>	Rwy Idg TDZE <b>669</b> Apt Elev <b>680</b>
--	------------------------	---

# ILS or LOC RWY 10C

CHICAGO O'HARE INTL (ORD)

From GIBNS: RNAV-1 GPS required.  
 RNAV 1-GPS or RADAR required for procedure entry. DME or RADAR required.  
 MISSED APPROACH: Climb to 4000 on heading 093° and CGT VORTAC R-336 to CGT VORTAC and hold.

D-ATIS <b>135.4</b> <b>282.225</b>	CHICAGO APP CON <b>119.0 292.125</b>	O'HARE TOWER <b>120.75 348.0</b>	GND CON (TWR CENTER) <b>124.125</b> (TWR NORTH) <b>118.05</b> (TWR SOUTH) <b>226.675</b> (ALL TWRs)	(TWR CENTER) <b>121.75</b> (OBND) <b>121.9</b> (IBND)	CLNC DEL <b>121.6</b>	CPDLC
--	---	-------------------------------------	--	---	--------------------------	-------



EC-3, 20 FEB 2025 to 20 MAR 2025

EC-3, 20 FEB 2025 to 20 MAR 2025

BAIRY I-SXH (25.8) RADAR	COUPR I-SXH (22.6) RADAR	KYLAA I-SXH (19.5) RADAR	PEPAW I-SXH (16.4) RADAR	SHARN I-SXH (13.2) RADAR	RRUDA I-SXH (10.1) RADAR	RAYYY INT I-SXH (4.8) RADAR	ZURSO INT I-SXH (1.4)	IM
VGSi and ILS glidepath not coincident KYLAA (VGSi Angle 3.00/TCH 75).								4000
GS 3.00° TCH 55								hdg 093°
*LOC only								CGT R-336
3.1 NM								CGT
CATEGORY A								
S-ILS 10C 869/18 200 (200-½)								
S-LOC 10C 1220/24 551 (600-½) 1220/60 551 (600-1¼)								
ZURSO FIX MINIMUMS (DUAL VOR RECEIVERS OR DME REQUIRED)								
S-LOC 10C 1100/24 431 (500-½) 1100/40 431 (500-¾)								

