

LOC/DME I-MED 111.1 Chan 48	APP CRS 093°	Rwy Idg 12246 TDZE 672 Apt Elev 680
---	------------------------	--

ILS or LOC RWY 10L

CHICAGO O'HARE INTL (ORD)

From GIBNS: RNAV-1 GPS required.

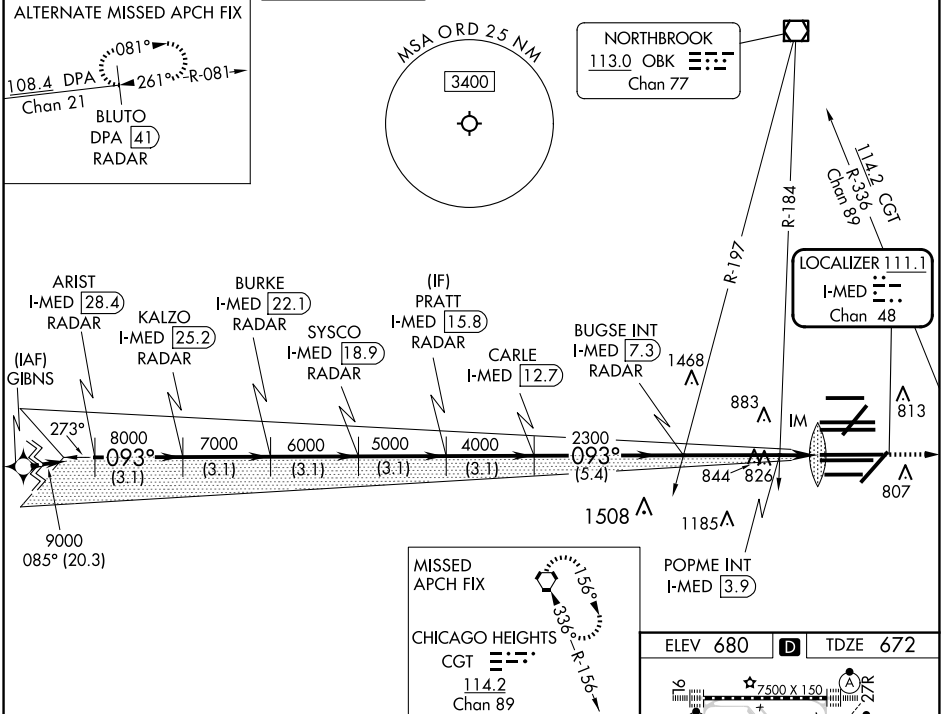
RNAV 1-GPS or RADAR required for procedure entry. DME or RADAR required.

Simultaneous approach authorized.

ALSF-2

MISSED APPROACH: Climb to 4000 on heading 093° and CGT VORTAC R-336 to CGT VORTAC and hold.

D-ATIS 135.4 282.225	CHICAGO APP CON 119.0 292.125	O'HARE TOWER 132.7 348.0	GND CON (TWR CENTER) 124.125 (TWR NORTH) 118.05 (TWR SOUTH) 226.675 (ALL TWRS)	CLNC DEL 121.75 (OBND) 121.9 (IBND)	CPDLC 121.6
--	---	------------------------------------	--	---	-----------------------



MISSED APCH FIX

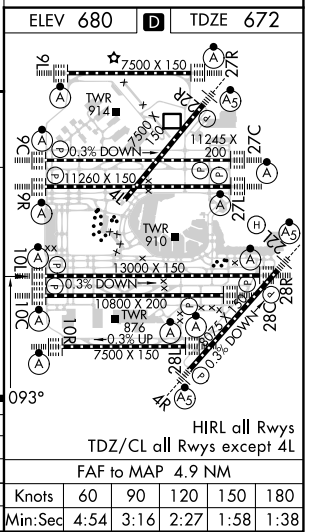
CHICAGO HEIGHTS CGT 114.2 Chan 89

ARIST I-MED 28.4 RADAR	BURKE I-MED 22.1 RADAR	PRATT I-MED 15.8 RADAR	BUGSE INT I-MED 7.3	CGT R-336																
KALZO I-MED 25.2 RADAR	SYSCO I-MED 18.9 RADAR	CARLE I-MED 12.7 RADAR	POPME INT I-MED 3.9																	
<table border="1"> <tr> <td>9000</td> <td>8000</td> <td>7000</td> <td>6000</td> <td>5000</td> <td>4000</td> <td>2300</td> <td>1200</td> </tr> <tr> <td>3.1 NM</td> <td>3.1 NM</td> <td>3.1 NM</td> <td>3.1 NM</td> <td>3.1 NM</td> <td>5.4 NM</td> <td>3.4 NM</td> <td>1.4 NM</td> </tr> </table>				9000	8000	7000	6000	5000	4000	2300	1200	3.1 NM	3.1 NM	3.1 NM	3.1 NM	3.1 NM	5.4 NM	3.4 NM	1.4 NM	
9000	8000	7000	6000	5000	4000	2300	1200													
3.1 NM	3.1 NM	3.1 NM	3.1 NM	3.1 NM	5.4 NM	3.4 NM	1.4 NM													
<table border="1"> <tr> <td>3.1 NM</td> <td>3.1 NM</td> <td>3.1 NM</td> <td>3.1 NM</td> <td>3.1 NM</td> <td>5.4 NM</td> <td>3.4 NM</td> <td>1.4 NM</td> <td>0.1 NM</td> </tr> </table>				3.1 NM	3.1 NM	3.1 NM	3.1 NM	3.1 NM	5.4 NM	3.4 NM	1.4 NM	0.1 NM								
3.1 NM	3.1 NM	3.1 NM	3.1 NM	3.1 NM	5.4 NM	3.4 NM	1.4 NM	0.1 NM												

VGSI and ILS glidepath not coincident (VGSI Angle 3.00/TCH 74).

GS 3.00° TCH 56

*LOC only.



EC-3, 20 FEB 2025 to 20 MAR 2025

EC-3, 20 FEB 2025 to 20 MAR 2025