

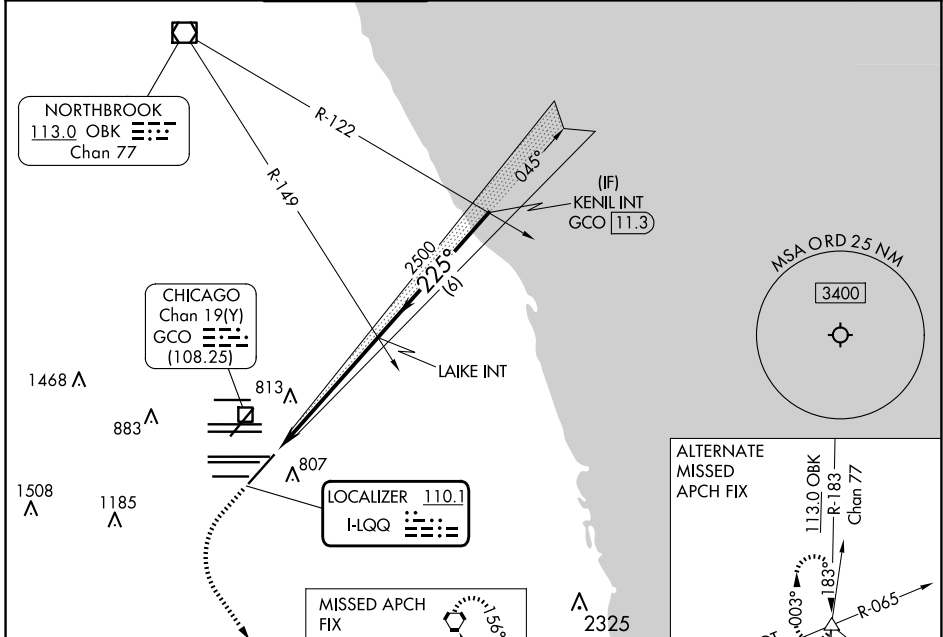
ILS or LOC RWY 22L

CHICAGO O'HARE INTL (ORD)

LOC I-LQQ 110.1	APP CRS 225°	Rwy ldg TDZE Apt Elev	8075 654 680
---------------------------	------------------------	-----------------------------	---

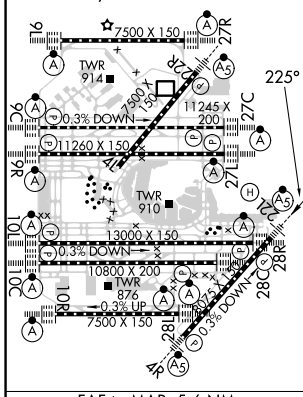
RADAR required for procedure entry.		MALSR	MISSED APPROACH: Climb to 1100 then climbing left turn to 4000 direct CGT VORTAC and hold.
Simultaneous approach authorized.			

D-ATIS 135.4 282.225	CHICAGO APP CON 119.0 292.125	O'HARE TOWER 120.75 348.0	GND CON 124.125 (TWR NORTH) 118.05 (TWR SOUTH) 226.675 (ALL TWRs)	(TWR CENTER) 121.75 (OBND) 121.9 (IBND)	CLNC DEL 121.6	CPDLC
--	---	-------------------------------------	---	---	--------------------------	-------



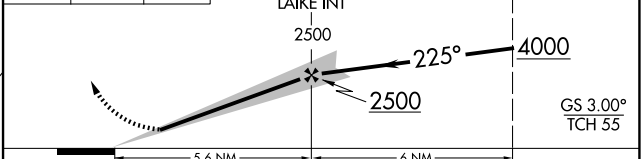
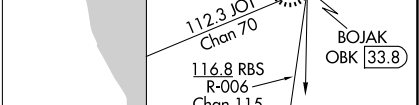
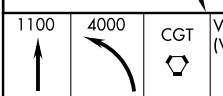
ELEV 680	D	TDZE 654
----------	----------	----------

TDZ/CL all Rwy's except 4L
HIRL all Rwy's



FAF to MAP 5.6 NM					
Knots	60	90	120	150	180
Min:Sec	5:36	3:44	2:48	2:14	1:52

MISSED APCH FIX	CGT	114.2	Chan 89
-----------------	-----	-------	---------



CATEGORY	A	B	C	D
S-ILS 22L	854/18 200 (200-1/2)			
S-LOC 22L	1120/24	466 (500-1/2)	1120/50	466 (500-1)
C CIRCLING	1220-1	540 (600-1)	1220-1 1/2	1460-2 1/2
			540 (600-1 1/2)	780 (800-2 1/2)

EC-3, 20 FEB 2025 to 20 MAR 2025

EC-3, 20 FEB 2025 to 20 MAR 2025