

LOC/DME I-UYJ <b>111.9</b> Chan 56	APP CRS <b>273°</b>	Rwy ldg <b>11245</b> TDZE <b>653</b> Apt Elev <b>680</b>
--	------------------------	--

# ILS or LOC RWY 27C

CHICAGO O'HARE INTL (ORD)

From VOGLR: RNAV 1-GPS required. Aircraft not GPS equipped - RADAR required for procedure entry. DME or RADAR required.

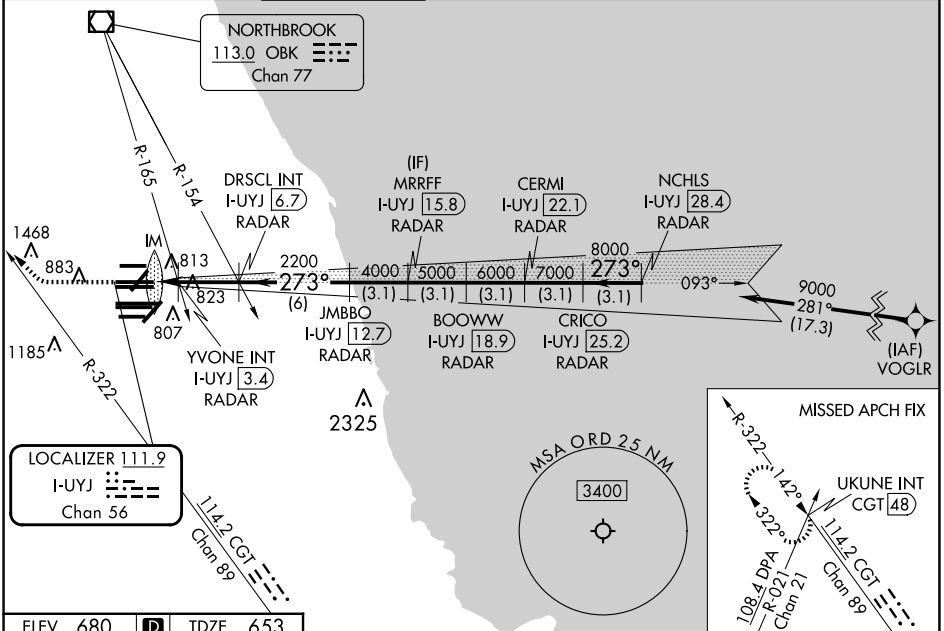
ALSf-2



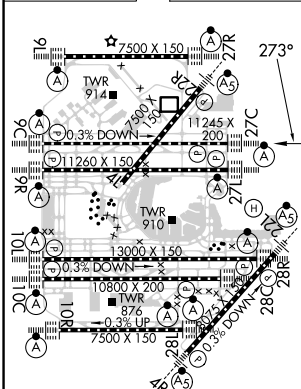
MISSED APPROACH: Climb to 1100 then climbing right turn to 4000 on heading 290° and CGT R-322 to UKUNE INT/ CGT 48 DME and hold.

Simultaneous approach authorized. For inop ALS, increase S-LOC 27C Cat C/D visibility to 1½ SM.

D-ATIS <b>135.4</b> <b>282.225</b>	CHICAGO APP CON <b>119.0 292.125</b>	O'HARE TOWER <b>121.15 348.0</b>	GND CON (TWR NORTH) <b>124.125</b> (TWR SOUTH) <b>118.05</b> (ALL TWRS) <b>226.675</b>	(TWR CENTER) (OBND) <b>121.75</b> (IBND) <b>121.9</b>	CLNC DEL <b>121.6</b>	CPDLC
--	---	-------------------------------------	---	--	--------------------------	-------

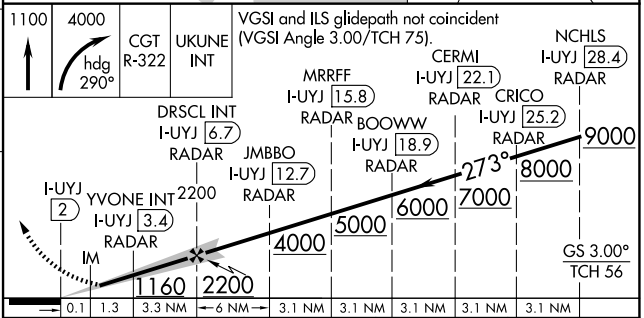


ELEV 680	<b>D</b>	TDZE 653
----------	----------	----------



FAF to MAP 4.7 NM

Knots	60	90	120	150	180
Min:Sec	4:42	3:08	2:21	1:53	1:34



VGSI and ILS glidepath not coincident (VGSI Angle 3.00/TCH 75).	NCHLS I-UYJ 28.4 RADAR			
	CERMI I-UYJ 22.1 RADAR			
	MRRFF I-UYJ 15.8 RADAR			
	CRICO I-UYJ 25.2 RADAR			
	BOOWW I-UYJ 18.9 RADAR			
	JMBBO I-UYJ 12.7 RADAR			
	YVONE INT I-UYJ 3.4 RADAR			
	I-UYJ 2 RADAR			
	IM			
	2200			
	1160			
	4000 5000 6000 7000 8000 9000			
	273°			
	GS 3.00° TCH 56			
CATEGORY	A	B	C	D
S-ILS 27C	853/18 200 (200-½)			
S-LOC 27C	1160/24 507 (500-½)		1160/55 507 (500-1)	
YVONE FIX MINIMUMS (DUAL VOR RECEIVERS or DME REQUIRED)				
S-LOC 27C	1080/24 427 (400-½)		1080/40 427 (400-¾)	

EC-3, 20 FEB 2025 to 20 MAR 2025

EC-3, 20 FEB 2025 to 20 MAR 2025