

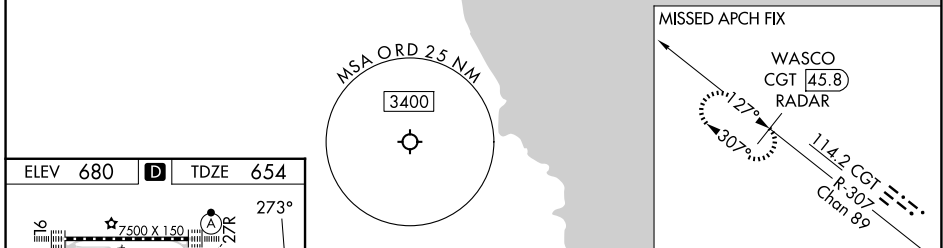
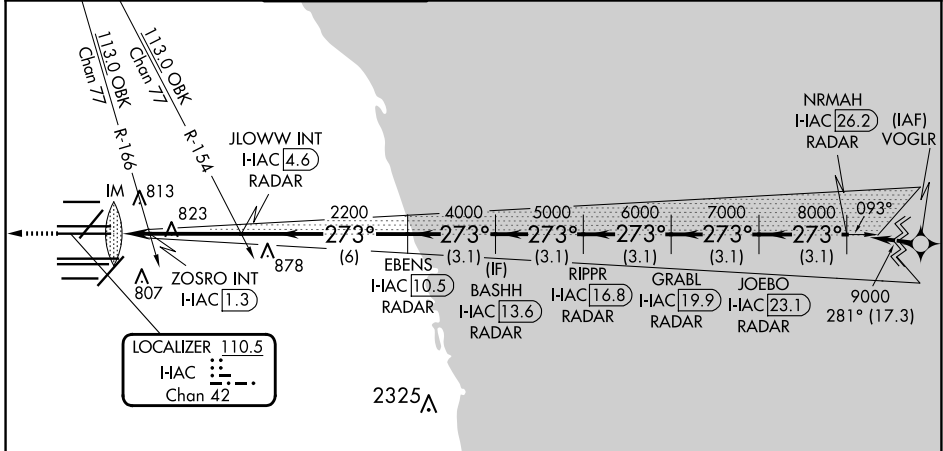
LOC/DME I-AIC 110.5 Chan 42	APP CRS 273°	Rwy ldg 11260 TDZE 654 Apt Elev 680
---	------------------------	--

ILS or LOC RWY 27L

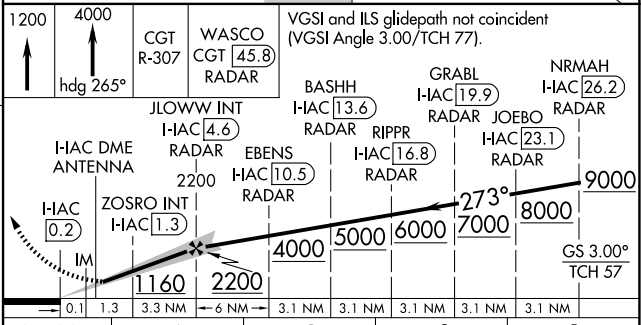
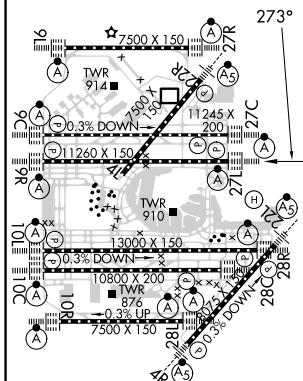
CHICAGO O'HARE INTL (ORD)

RNP APCH-GPS from VOGLR. Aircraft not GPS equipped - RADAR required for procedure entry. DME or RADAR required.	ALSF-2 	MISSED APPROACH: Climb to 1200 then climb to 4000 on heading 265° and on CGT VORTAC R-307 to WASCO/CGT 45.8 DME/RADAR and hold.
<p>▼ Simultaneous approach authorized. For inop ALS, increase S-LOC 27L Cat C/D visibility to 1 1/8 SM.</p>		

D-ATIS 135.4 282.225	CHICAGO APP CON 119.0 292.125	O'HARE TOWER 126.9 348.0	GND CON 124.125 (TWR NORTH) 118.05 (TWR SOUTH) 226.675 (ALL TWRs)	(TWR CENTER) 121.75 (OBND) 121.9 (IBND)	CLNC DEL 121.6	CPDLC
--	---	------------------------------------	---	---	--------------------------	-------



ELEV 680	D	TDZE 654
-----------------	----------	-----------------



HIRL all Rwws TDZ/CL all Rwws except 4L					
FAF to MAP 4.7 NM					
Knots	60	90	120	150	180
Min:Sec	4:42	3:08	2:21	1:53	1:34

CATEGORY	A		B		C		D
S-ILS 27L	854/18 200 (200-1/2)						
S-LOC 27L	1160/24	506 (500-1/2)	1160/55		506 (500-1)		
ZOSRO FIX MINIMUMS (DUAL VOR RECEIVERS OR DME REQUIRED)							
S-LOC 27L	1080/24	426 (400-1/2)	1080/40		426 (400-3/4)		

EC-3, 20 FEB 2025 to 20 MAR 2025

EC-3, 20 FEB 2025 to 20 MAR 2025