

LOC/DME I-VZE <b>108.95</b> Chan 26 (Y)	APP CRS <b>273°</b>	Rwy ldg <b>10800</b>
		TDZE <b>651</b>
		Apt Elev <b>680</b>

# ILS or LOC RWY 28C

CHICAGO O'HARE INTL (ORD)

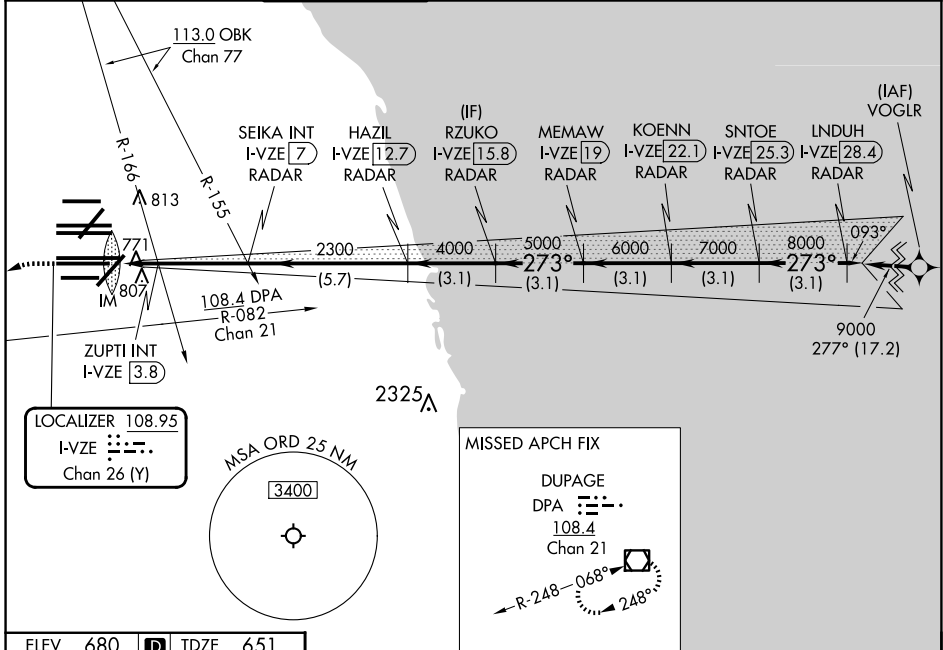
From VOGLR: RNAV 1-GPS required.  
Aircraft not GPS equipped - RADAR required for procedure entry.  
DME or RADAR required.

ALSf-2

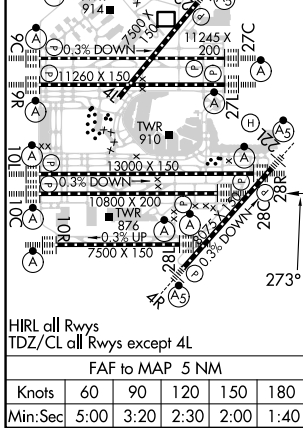
MISSED APPROACH: Climb to 1100 then climbing left turn to 4000 on heading 215° and DPA VOR/DME R-082 to DPA VOR/DME and hold.

Simultaneous approach authorized.

D-ATIS <b>135.4</b> <b>282.225</b>	CHICAGO APP CON <b>119.0 292.125</b>	O'HARE TOWER <b>120.75 348.0</b>	GND CON (TWR CENTER) <b>124.125</b> (TWR NORTH) <b>121.75</b> (TWR SOUTH) <b>118.05</b> (ALL TWRS) <b>226.675</b>	(TWR CENTER) <b>121.75</b> (OBND) (IBND) <b>121.9</b>	CLNC DEL <b>121.6</b>	CPDLC
--	---	-------------------------------------	---	--	--------------------------	-------



ELEV 680	D	TDZE 651
----------	---	----------



1100	4000	DPA R-082	DPA	RZUKO I-VZE [15.8] RADAR	KOENN I-VZE [22.1] RADAR	INDUH I-VZE [28.4] RADAR
hdg 215°				SEIKA INT I-VZE [7] RADAR	MEMAW I-VZE [19] RADAR	SNTOE I-VZE [25.3] RADAR
* LOC only.						
I-VZE [2]	ZUPTI INT I-VZE [3.8]	HAZIL I-VZE [12.7] RADAR	2300	5000	6000	7000
IM	* I-VZE [2.9]			4000	8000	9000
	* 1200					GS 3.00° TCH 55
VGSi and ILS glidepath not coincident (VGSi Angle 3.00/TCH 80).						
0.1	0.9	0.8	3.2 NM	5.7 NM	3.1 NM	3.1 NM
CATEGORY A B C D						
S-ILS 28C 851/18 200 (200-½)						
S-LOC 28C 1200/24 549 (600-½) 1200/60 549 (600-1¼)						
ZUPTI FIX MINIMUMS (DUAL VOR RECEIVERS OR DME REQUIRED)						
S-LOC 28C 1040/24 389 (400-½) 1040/35 389 (400-¾)						

EC-3, 20 FEB 2025 to 20 MAR 2025

EC-3, 20 FEB 2025 to 20 MAR 2025